

...YOUR FREE LOCAL NEWS

JULY 2026

# ALDEBURGH TIMES



PART OF THE **TIDE COLLECTION**

ALDEBURGH TIMES WOODBRIDGE TALK SOUTHWOLD ORGAN SAXMUNDHAM NEWS LEISTON OBSERVER FRAMLINGHAM FOCUS

What's On at  
**Leiston Film Theatre**



Fri 10th July at 4pm & 7pm  
 Sat 11th July at 1pm, 4pm & 7pm  
 Sun 12th July at 12pm & 3pm  
 Mon 13th - Thurs 16th July at 5pm & 7.30pm  
 Fri 17th July at 4pm  
 Sat 18th July at 1pm & 4pm  
 Sun 19th July at 3pm  
 Mon 20th - Thurs 23rd July at 4pm  
 Mon 27th & Wed 29th July at 12pm  
 Tues 28th & Thurs 30th July at 3pm

**TOY STORY 5** PG

Sun 12th July at 6pm

**HANDA OPERA  
 VERDI'S AIDA** U

Fri 17th & Sat 18th July at 7.15pm  
 Sun 19th July at 6pm  
 Mon 20th - Thurs 23rd July at 7.15pm

**SUPERGIRL** 12A

Fri 24th July at 12pm & 3pm  
 Sat 25th & Sun 26th July at 3pm  
 Mon 27th & Wed 29th July at 3pm  
 Tues 28th & Thurs 30th July at 12pm

**MINIONS &  
 MONSTERS**

PG



Fri 24th & Sat 25th July at 7.15pm  
 Sun 26th July at 6pm

**DISCLOSURE DAY** 12A

Mon 27th - Thurs 30th July at 7.15pm

**500 MILES** 12A

Fri 31st July - Sun 9th Aug

**MOANA** PG

Fri 31st July at 7.15pm

**MICHAEL** 12A

Sun 2nd Aug at 4.45pm

**TOP HAT  
 THE MUSICAL** PG

Sun 2nd Aug at 7.30pm

**EPiC: ELVIS PRESLEY  
 IN CONCERT** 12A

[www.leistonfilmtheatre.co.uk](http://www.leistonfilmtheatre.co.uk)



**THE TOYS ARE BACK IN TOWN!  
 ON SCREEN 10th - 23rd JULY**



**17th - 23rd JULY**

**ON STAGE SOON  
 COMEDY-DRAMA**



**WHAT COULD  
 POSSIBLY GO WRONG?**

**MORNING  
 CAMPERS**

Leiston Film Theatre, 25th-27th Sept  
[www.leistonfilmtheatre.co.uk](http://www.leistonfilmtheatre.co.uk)



# A NOTE FROM OUR EDITOR




Huge congratulations to Aldeburgh Yacht Club member, Matilda Nicholls, who won the Silver Medal in the ILCA 6 Women's European Championship, a very positive step towards her campaign to compete in the 2028 Olympics. I wish her every success and hope to report more achievements on her journey. The Yacht Club are doing a wonderful job of providing great opportunities for local primary schools and the BigKid Foundation to experience sailing (see page 5). Thank you **Paul Barritt** for our cover photo this month

Please drop me a line to boost your business by advertising with us, in any or all of our six titles, or if you have any news or events you would like to share with our readers. Email: [lou@tidecollection.com](mailto:lou@tidecollection.com)

### Quote of the month

I know that if odour were visible, as colour is, I'd see the summer garden in rainbow clouds.

### Robert Bridges



## TIDE COLLECTION

A COLLECTION OF 6 FREE MAGAZINES

DISTRIBUTION OF 12000 DELIVERED DOOR TO DOOR & TO MANY VARIED OUTLETS

CONTACT **LOUISE GISSING** FOR PRICES AND QUERIES

[LOU@TIDECOLLECTION.COM](mailto:LOU@TIDECOLLECTION.COM)  
OR CALL 01728 833003

## INSIDE YOUR MAGAZINE...

- FROM ALDEBURGH TOWN COUNCIL 6  
- Save the date – 29th August – a day of fun, music, food & community
- CITIZENS ADVICE EAST 15  
- Train with us to be a Citizens Advice volunteer!
- BRITTEN PEARS ARTS 17  
- Upgraded Britten Pears Building opens
- MARMALADE AT THE READY 19  
- Leiston to host free open-air Screening of Paddington in Peru
- FROM JENNY RIDDELL-CARPENTER MP 21  
- Campaigning for better rail services across East Suffolk

## LEISTON PRESS

PRINTING | SIGNAGE | PUBLISHING

01728 833003 [leistonpress.com](http://leistonpress.com)  
[lee@leistonpress.com](mailto:lee@leistonpress.com)

A FAMILY RUN BUSINESS WITH A WEALTH OF SIGNAGE KNOWLEDGE

Who knew there were so many different sign and display options for your business?

At Leiston Press, we specialise in signage, from design to print, and provide them all for you!

Getting your business noticed and standing out from the crowd is essential in the marketplace, and signs and displays can help you achieve this.







**NATIONWIDE DELIVERY**

**FAST RESPONSIVE QUOTES**

**PART OF A CARBON CAPTURE SCHEME**

**SAME DAY TURNAROUND AVAILABLE**

Sapphire, Aldeburgh



# suffolk

## hideaways

coastal and country holiday retreats

### Thinking of letting your holiday home?

**We know choosing an agency to let your property can be a big decision, let us make it easy for you.**

A friendly and local team | Excellent occupancy levels  
A Marketing or Managed service | Multi-channel marketing  
Peace-of-mind damage cover | Professional photography  
No restrictions on use of your property

To find out more please phone, visit our website or pop into our office in **Aldeburgh** for a chat.

**01728 666 300** | [suffolkhideaways.co.uk](http://suffolkhideaways.co.uk) |

# Creating moments of joy every day



HIGHFIELD HOUSE  
CARE HOME  
HALESWORTH

*"I have always found the staff to be amazing, so caring and kind, nothing is too much trouble. They look after my dad and all his quirky ways with kindness. I feel so lucky that we found this fabulous care home and would 100% recommend the care there to anyone."\**



At Highfield House, we help every resident thrive within our vibrant, nurturing and happy extended family community. Set in landscaped gardens, our aim is to feel like your new home, not a care home.

We provide the highest level of care for every resident:

-  Respite or Short-Term Care
-  Residential Care
-  Residential Dementia Care

## BOOK A VISIT:

Call 01986 872125 or email [highfieldhouse@castlemeadowcare.co.uk](mailto:highfieldhouse@castlemeadowcare.co.uk)

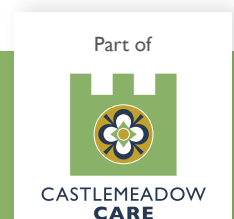
View some wonderful short videos from our residents:

Scan here with your phone camera



Highfield House, London Road,  
Halesworth, Suffolk, NP19 8LP

*\*Full review available on [carehome.co.uk](http://carehome.co.uk)*



# ALDEBURGH YACHT CLUB NEWS

In our last update we mentioned Matilda Nicholls, a club member from Aldeburgh, who is in the British Sailing Team and her campaign to compete at the Olympics in Los Angeles in 2028. We are thrilled - and very proud - to report that she won the Silver Medal in the ILCA 6 Women's European Championship held in Kastela, Croatia in May. This is a huge milestone and we hope to report on her other achievements over the summer.



We hosted 14 young people from South London to participate in a week-long programme in association with the BigKid Foundation. All went out sailing, took a powerboat trip to Orfordness and saw and learnt about the River Alde at first hand. Members of the Club raised a remarkable £16,000 to support the foundation and the programme which now takes place annually.



Year 6 pupils from 13 of the local primary schools joined in our schools programme, supported by the Aldeburgh Yacht Club Schools Sailing Trust. These partnerships are a huge part of our commitment to being an open and inclusive club.

We had sunny weather and light to moderate breezes for most of May before things turned in early June. We held Flying Fifteen and Wayfarer Open Meetings with over 20 competing boats and staged our Spring Regatta over two days. A number of our cruisers headed north on an East Coast journey.

July and August are the busiest months at the club.

Our RYA training programme runs for 5 weeks from mid-July. This caters for all levels and is delivered by our resident instructor and a cadre of 40 part-time qualified instructors. The majority of students on these courses are non-members and use of our training boats is included as part of the package. The programme caters for adults and children. This really is the best way to learn to sail, make friends and become involved on the water with the opportunity to then join in our regattas in August. There are still training places available but we recommend people book quickly: please email via [training@aldeburghyc.org.uk](mailto:training@aldeburghyc.org.uk). Sailors can then go on to join our RYA Pathway programme that runs throughout the year and join in our many other races and events on the water. We are always keen to show visitors and potential members around the club and to introduce our team. Anyone interested should get in touch via [clubmanager@aldeburghyc.org.uk](mailto:clubmanager@aldeburghyc.org.uk) and visit our website [www.aldeburghyc.org.uk](http://www.aldeburghyc.org.uk).



## Hello Aldeburgh



We are your local community radio station, broadcasting online to bring you a varied mix of music programmes, stories and information about what's on in our area.

## Have you discovered us yet?





Listen online at: [www.abcradio.co.uk](http://www.abcradio.co.uk)



via the app and on Alexa



# FROM ALDEBURGH TOWN COUNCIL

**Something BIG is coming to Aldeburgh this summer...** Get ready to mark your calendars, because Saturday 29th August is set to bring an exciting new event to the Old Generator Station, promising an unforgettable day and evening of fun, music, food, and community spirit.

Designed to be family-friendly and welcoming to all, this special Bank Holiday weekend gathering will offer laid-back festival vibes, a relaxed atmosphere, delicious food and drink, fantastic entertainment, and plenty of opportunities to simply unwind and enjoy time with family and friends. Whether you're looking to dance, socialise, soak up the atmosphere, or just enjoy a long summer afternoon and evening in beautiful surroundings, there will be something for everyone.

As the summer holidays draw to a close, this promises to be the perfect way to celebrate the end of the school break and make the most of the long weekend in one of Suffolk's most treasured coastal towns. Most importantly, it's all about bringing people together – residents, visitors, families, and friends.

Come and create lasting memories and celebrate everything that makes Aldeburgh such a special place. For now, the details remain under wraps... but trust us, you won't want to miss this one. **Save the date – Saturday 29th August at the Old Generator Station, Aldeburgh.**

Watch this space and be sure to follow Aldeburgh Suffolk on Facebook and Instagram for exciting announcements and updates coming soon!

**All published advertising, printing and signage supplied by Leiston Press**



The **CROWN**  
WOODBRIDGE

**YOUR Saturday NIGHT, SORTED.**

*Two courses and a drink for £24.50 per person\**  
Available 5.30pm to 8.30pm  
*\*Exclusions may apply.*

**Book your table via our website**  
[www.thecrownatwoodbridge.co.uk](http://www.thecrownatwoodbridge.co.uk)

*Seafood Grill*

**LUNCH BY THE SEA FOR £23**

Two courses from our set menu\*

Available midday - 5pm Monday to Friday. All welcome!  
Book your table via our website  
[www.brudenellhotel.co.uk/dine](http://www.brudenellhotel.co.uk/dine)  
*\*Please note our Let's Lunch menu changes regularly*

**Brudenell**  
Aldeburgh

The Parade, Aldeburgh,  
Suffolk, IP15 5BU

# FESPA SUMMER PARTY

**2nd August 2026 at Southwold Arts Centre, 4 – 6pm**

We are delighted to welcome Emma Freud, Jill Freud's daughter, who will give a personal tribute to Jill at our annual summer party this year, when we will be celebrating the life of the late Jill Freud, who played such a pivotal part in the East Suffolk's arts scene. Lady Freud was a leading figure in East Suffolk's regional theatre and having co-founded FESPA, (Friends of the East Suffolk Performing Arts) she was president for many years and always a huge supporter.

This is a 'Members only' event but you can join using the link below and we'll look forward to welcoming you to your first FESPA event! FESPA annual membership (£15 per individual or £25 for couples) gives access to a wide range of fun events and helps us to support young people with bursaries to train in the performing arts and to support local arts organisations.

There will be some live music, light refreshments and an opportunity to meet the actors from this year's Southwold and Aldeburgh season. We also look forward to seeing some film footage of Jill talking about her acting career and also her time as an evacuee with C S Lewis.

Tickets must be reserved in advance by all those attending. They are available on a first come first served basis by using the link here: [www.ticketsource.com/fespa](http://www.ticketsource.com/fespa)

## Bursaries

Young people who seek to pursue a career in the performing arts sometimes face huge challenges. Not only is there fierce competition for places in recognised colleges, but the costs of travel, living and accommodation on top of tuition fees and associated expenses can represent a daunting obstacle to prospective students and their parents.

In a bid to help home-grown talent fulfil its potential, the local charity, Friends of East Suffolk Performing Arts (FESPA) awards one-off bursaries of up to £1500 to a few carefully selected students each year.

FESPA bursaries are designed to provide financial support and encouragement to deserving students of the performing arts who either live in the area or have strong local connections and who have already obtained a place at a recognised institution. Each student is required to submit an application form and CV and specifically to explain how the bursary would be of help. References also have to be supplied.

In the last sixteen years, FESPA has awarded bursaries worth more than £75,000 to students of acting, dancing, music and stage management. If you are hoping to start a specific performing arts course in the autumn this year, now is the time to submit an application. You can let FESPA know later if and when you receive a definite offer of a place. The closing date for completed applications is midnight on Friday July 31 2026.

To ask for full details and to obtain an application form, please email James Rand at [fespa\\_bursaries@gmail.com](mailto:fespa_bursaries@gmail.com)



## THE LEAGUE OF FRIENDS OF ALDEBURGH AND DISTRICT COMMUNITY HOSPITAL

(Charity Number 247890)



invites you to a



# GARDEN PARTY

In the hospital grounds

Sunday 19th July 2026 3pm – 5pm

We will be serving tea and coffee  
with cake (inc gluten free)  
all made in the hospital kitchen.  
Live music too. Do come. Bring a friend.

Free entry. Just turn up.

All welcome.

Join or renew  
your membership.

**RAFFLE**



The League of Friends of Aldeburgh and District Community Hospital is inviting the local community to a summer Garden Party on **Sunday, 19th July 2026**.

The event will take place from **3pm to 5pm** right in the hospital grounds. Attendees can look forward to a relaxing afternoon featuring live music and a free-to-enter raffle. Refreshments, including tea, coffee, and a selection of cakes (with gluten-free options available), will be served—all freshly prepared on-site in the hospital kitchen.

The Garden Party is free to enter, and no prior booking is required; Just turn up and bring a friend along. In addition to the festivities, the event will offer a wonderful opportunity for supporters to either join the charity or renew their existing membership.

All are welcome to attend and support the vital work of the League of Friends.

The League of Friends works to raise vital funds for specialised equipment, capital projects, and community health initiatives that enhance care and support for patients and staff at the hospital and in the community generally.



## ALDEBURGH UNITED CHARITIES IS ASKING YOU FOR YOUR HELP

We have compiled an online questionnaire to establish where the priorities lay for our town. On the survey there are several projects but is there anything else we can help with. All the information is confidential and we will make decisions about our future work from your answers.

If you would like to donate please go to the QR code marked AUC website to see options. We are also looking for volunteers to help with the various things we do, you can email on the site too.



Thank you for taking the time  
to read and look forward to your ideas.

Rob Mabey (chair)



Survey QR Code

## ALDEBURGH GARDENING CLUB

The Aldeburgh Gardening Club likes to include a garden visit or two during the summer break. Coach trips have become very expensive in the last few years so we have recently been doing 'self-drive' visits to local gardens. These are usually to gardens that open under one of the charity open gardens schemes, the National Gardens Scheme (NGS Yellow Book) or the St Elizabeth Hospice scheme. These gardens are usually willing to open specially for us for an afternoon near the time of their scheduled charity opening and of course we pay the same fees.

At the beginning of June we went to see the Old Rectory Garden in Nacton. We were very lucky with the weather which thundered and stormed all morning but started to clear as we drove down the A12 towards Ipswich and then the sun came out and we had a lovely two hours in the 2 acre garden before the weather closed in as we got home around 5pm.

Tizzy and James welcomed us into their lovely garden and Tizzy showed us a photo from when they had bought the house nearly forty years ago. A complete neglected space with fallen trees still lying from the storm in '87.

The garden seemed very well designed to take advantage of the rising profile from the house with a spacious semi-circular lawn and two wide wings of herbaceous border backed by yew hedges. Around this grand centrepiece smaller spaces for vegetables, studio, damp garden and secret paths fitted in snugly and discreetly.

Much of the design apparently arose a bit at a time. The naturalistic rill using local springs recirculated and set into planting perfectly chosen for the damp area, for example came later as did the charming patio near the house which looked like it had always been there. The rest of the garden was sandy soil and Tizzy had been watering like mad to keep it looking reasonable during that long dry spell and the very hot week we had just before our visit. How lucky to have local FREE water to do so. Water envy, not pretty.

It really looked amazing, the catmint was flowering profusely and there were a couple of large plants with pretty pink spikes of flower just coming out which I think were American pokeweed, *Phytolacca americana*. This has very decorative spikes of shiny black berries later in the summer but it is very poisonous.

If that is what it was, it was a very decorative version.

Tizzy said she favoured a looser style of planting and as the sandy soil enabled self-seeding things tended to land where they would. I have to agree and fully support the permissive attitude that allows cow parsley to infiltrate the borders. It looks charming and relaxed in my opinion but maybe unkempt to others?

Tea and cake on the lawn by the studio ended the afternoon before we set off home in time for more storms and thunder.

**Karen Mountford**

[aldeburghgardeningclub.org.uk](http://aldeburghgardeningclub.org.uk)



## BAWDSEY RADAR MUSEUM

Activities continue at the block this month. The Museum is open every Thursday, Sunday and Bank Holiday Mondays.

Amateur radio station GB2BRS will be operational on certain days over the summer, including 19th July. Come and say hello to the world or perhaps listen to the Universe!



Over the school summer holidays we will be again running our Spy Trail. Learn how to become a spy and how to communicate covertly.

The virtual reality Climb the Radar Tower will also be available on 26th July.

Further details of all our activities may be found on our website: [www.bawdseyradar.org.uk](http://www.bawdseyradar.org.uk)

**RSPB Minsmere Nature Reserve**  
Wildlife - Shop - Café - Events - Family Activities






[rspb.org.uk/days-out/reserves/minsmere](https://www.rspb.org.uk/days-out/reserves/minsmere)

**TONY BROWN'S FUNERAL SERVICE**  
Est.1979

*Proudly independent family run business*

The Funeral Parlour, New Cut, Saxmundham, Suffolk, IP17 1EH  
T:01728 603108  
E: [office@tonybrownsfuneralservices.co.uk](mailto:office@tonybrownsfuneralservices.co.uk)  
[www.tonybrownsfuneralservices.co.uk](http://www.tonybrownsfuneralservices.co.uk)



Owners of The Greenwood Burial Ground, Farnham

**ALLVAC**  
**SERVICE & REPAIR**  
KIRBY & DYSON SPECIALIST

HAVE YOUR VACUUM CLEANER COLLECTED FULLY SERVICED AND RETURNED AT YOUR CONVENIENCE FOR

**£35**

ALL MAKES AND MODELS

**PAUL LAYTON**  
01379 871095 OR 07866 549642



**A1 Carpets** <sup>4U</sup>  
*By Gary Burden*

**For the complete A1 Home Selection Service**

*Carpets, Vinyl & Luxury Vinyl Tiles*  
*Professional, reliable and competitive*  
*Save ££££'s - We will beat any genuine retailer quote!*

**Tel: 01728 604396 Mob: 07419 375720**  
[www.a1carpets4u.co.uk](http://www.a1carpets4u.co.uk)

**HUBBARD**  
Domestic Appliance Repairs

Supply ✓  
Install ✓  
Repair ✓

- Ovens
- Dishwashers
- Washing Machines
- Fridges
- Freezers
- Tumble Dryers
- Cooker Hoods
- Microwaves

- Bosch
- LG
- Hotpoint
- Samsung
- Beko
- Hisense
- AEG
- AND MANY MORE!

Telephone: 01394 799997 | 07728 403921  
Email: [admin@hubbarddar.co.uk](mailto:admin@hubbarddar.co.uk) | Website: [www.hubbardappliancerepairs.co.uk](http://www.hubbardappliancerepairs.co.uk)  
Visit Our Showroom: 4 Beach Station Road, Felixstowe, IP11 2DR

*Harris Handyman Services*

**Do you need a handyman?**

- Painting & Decorating • Window & Gutter Cleaning •
- Garden Maintenance (one off or regular) •
- Pressure Washing Services • Odd Jobs • Fully Insured •

**☎ 07727 401 820**  
[harrishandyman16@gmail.com](mailto:harrishandyman16@gmail.com)


**LEISTON PRESS**  
PRINTING **Signage** PUBLISHING


[WWW.LEISTONPRESS.COM](http://WWW.LEISTONPRESS.COM) ✉ [ANNIE@LEISTONPRESS.COM](mailto:ANNIE@LEISTONPRESS.COM) ☎ 01728 833003


**PERSONALISED CLOTHING AT LEISTON PRESS**

Professional, promotional and completely personalised to your business and brand, wear your message loud and proud with printed clothing.

We can do one colour vinyl, full colour vinyl or embroidery. Supply your own clothing or ask us to get this for you, with our quick turnaround and great prices we can help!

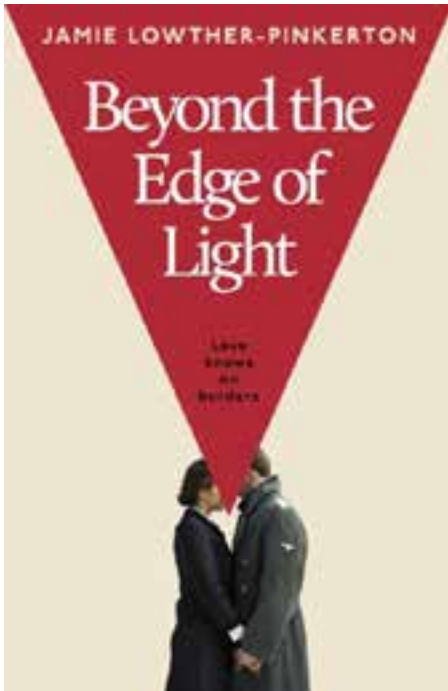


 DELIVERY TO ANYWHERE IN THE UK

 QUICK RESPONSE QUOTES

## BOOK REVIEW

**Jamie Lowther-Pinkerton. Beyond the Edge of Light. Hardback, £16.99**



This gripping debut novel grew out of the author's personal and local experience. Jamie grew up near the marshes of Shingle Street and has long been intrigued by the mystery that still hangs over the events there in the summer of 1940.

'As a local man and later an SAS officer (and therefore perhaps better equipped to interpret the evidence)', the denouement of the novel relates what Jamie believes may have happened there. Suffolk knowledge and family history combine in this moving and exciting story of love, courage and duty in the Second World War.



**The author's mother Sue at the age of the hero Missie.**

The story begins with the hero Missie Ormesby, fluent in German, meeting a dashing and anti-Nazi Prussian aristocrat who has been conscripted into the Luftwaffe. They have a brief, intense romance before war descends on Europe and makes their happiness impossible. Missie volunteers at Bletchley Park.

'I did not have far to look for a model for my hero,' writes Jamie. 'My mother, Sue who lived a life full of adventure provides the character, backstory, even in my mind's eye the looks of my hero.'

Like Missie, Sue too had an unconventional upbringing on the Northwest Frontier, both were sent back alone to school in England at a punishingly young age, both rebelled, both eventually found their metier in secret service: Missie at Bletchley Park and Jamie's mother in MI5.

There is a book launch for the novel at **6 pm on Friday 3rd July** at The Aldeburgh Bookshop. Jamie will be signing copies. Everyone is welcome at this event.

**Mary James  
Aldeburgh Book Shop**

## ALDEBURGH PHOTOGRAPHY GROUP

The next meeting of the Aldeburgh Photography Group will be held on **Wednesday 15 July** at 7.30pm in the Aldeburgh Library.

We are pleased to announce that this month we will welcome to our meeting local photographer Lucy Kayne. Lucy has previously presented sessions on photo editing and how to seek beauty in the every day. She has also led photo walks to Covehithe and Staverton Thicks for our members. Lucy's talk this time will centre around using the smartphone to explore things like focus, light and composition and how these elements relate to our knowledge of DSLRs.

There may also be time at the end of her session for people to practise their skills if they wish.



A reminder that we are a friendly group and we are keen to welcome everyone from beginners to experienced photographers, from users of iPhones to the latest DSLRs. We do not run competitions which put too many amateur photographers off joining local photography groups.

Instead, we aim to help each other learn and improve our work.

If you want to know more, or if you want to check for up-to-date information on our meetings, please contact us through our website ([www.aldeburghphotographygroup.org.uk](http://www.aldeburghphotographygroup.org.uk)).



**01473 200566**  
**0800 6965575**  
**07951 252811**



## You're in the right place.

Whether it's a slipped tile, a stubborn leak, or a full re-roof, our local Suffolk team gives honest advice, free written quotes, and 24-hour emergency call-outs, every day of the year.

FLAT ROOFS | FASCIA & GUTTERING WORK  
ROOF REPAIRS | ALL ROOFING SERVICES

**24/7 CALL OUT FOR EMERGENCY LEAKS**

[www.stormproofroofing.co.uk](http://www.stormproofroofing.co.uk)  
[stormproofroofers007@gmail.com](mailto:stormproofroofers007@gmail.com)



## 'ART IN RUINS II'

Come and visit Sibton Church, and the Sibton Abbey Ruins between July 18th & 19th, 10.30am - 4pm.



With local artists and craftspeople displaying their work for sale at Sibton Church, the event 'Art in Ruins' which took place in 2024 was a great success. Nicholas Levett-Scrivener has kindly given permission for visits to the wonderful scenery of the Sibton Abbey Ruins to inspire new work. The Friends of St Peter's Sibton are hosting the display 'Art in Ruins II' at Sibton Church with more art and craft for sale again as well as demonstrations this year. Also available will be information on the amazing amount of artwork contained in the church itself. There will be refreshments all day at the church and parking is free.

Tickets: (Cash only) £5pp. A £15 group ticket for four people is available if there is at least one U16 included in the group.

Artists and the public will also be able to visit Sibton Abbey Ruins with beautiful landscape scenery for photography, drawing or paintings.

There will be guided tours available as always on these occasions. (To allow artists to bring equipment, parking will be available at the site)

Artists and craftspeople, if you haven't applied to exhibit there as yet, there is still space but it is filling quickly! This is a chance for you to exhibit your work and display items for sale in the spacious medieval nave and north aisle of Sibton Church beneath its highly decorated Tudor hammerbeam ceiling. Apply to [Friends@sibtonstpeter.com](mailto:Friends@sibtonstpeter.com) for details around setting up time, terms & conditions or visit the website: <https://www.sibtonstpeter.com>



## ALDE VALLEY SUFFOLK FAMILY HISTORY GROUP

In a change to our previously advertised programme, the July meeting of the Alde Valley Suffolk Family History Group will be a talk by Janet Few entitled '*Presenting and preserving the past*'.

As family historians, we are the current custodians of family memory. With each generation that passes, some of that information leaches away. We owe it to those who follow to halt that erosion and preserve as much as possible of our family heritage. Family anecdotes and memories, photographs and our own reminiscences are part of that legacy, as well as the stories behind heirlooms and artefacts of family significance. These may not be items of monetary worth but their value in our shared past can be incalculable.

This talk does not focus on scientific preservation and conservation techniques but on the importance of being a custodian of memory, with a duty to hand that down, giving suggestions as to how that might be achieved.

Dr. Janet Few is a British historian, genealogist, and author specialising in 17th-century social history. Best known for her educational books, living history interpretations as '*Mistress Agnes*' and award-winning historical fiction, she is the president of the Family History Federation.

The talk takes place on **Monday 20th July** at 2.30pm, in person at the Fromus Centre, Street Farm Road, Saxmundham, IP17 1AL and, for members only, on Zoom.

No need to book - just turn up - free for members and £5 for visitors, including tea/coffee/biscuits. Good, free car-parking. Membership only costs £10 for a year - see <https://www.avsfhg.org.uk/join-us?section=register> - and Zooming is free.

### Further Programme:

No meeting in August

**Sat 12 Sept:** Family & Local History Open Day, Fromus Centre, Saxmundham

**Mon 21 Sept:** '*Hands Across the Sea*' - Helen Baggott

**Mon 19 Oct:** Members' Stories

**Mon 16 Nov:** '*Epidemic Diseases and our Ancestors*' - Janet Few

**Mon 14 Dec:** '*200 Years of Farming History*' - Ashley Cooper

# OLD GENERATOR STATION WHATS ON

**JULY 3<sup>RD</sup> = EAST OF ENGLAND COOP CHARITY QUIZ TO RAISE FUNDS FOR ALDEBURGH PRIMARY SCHOOL. £15 TEAMS UP TO SIX 7PM FOR 7.30 START PLEASE BOOK WITH US FOR A TABLE**

**NEXT SUNDAY LUNCH = SUNDAY 19<sup>TH</sup> JULY 12.30-2.30PM PLEASE BOOK**

**FOOD SERVED**  
**FRIDAY 5-7PM**  
**SATURDAY 12-7PM**  
**SUNDAY 12-4PM**

**BIG SCREEN SPORT EVERY WEEKEND**

**Aldeburgh Summer Theatre**  
 Aldeburgh Jubilee Hall, entrance opposite Lifeboat Station, or via Crabbe Street IP15 5BP

**20th to 25th July**  
**The Importance of Being Earnest**  
 Wilde's ultimate Romcom of Errors. ACT tribute production to Jill Freud & Company

**10th to 15th August**  
**SHOW and TELL**  
 Dark-comedy Gold by 'National Treasure' Alan Ayckbourn

**27th July to 8th August**  
**Love From a Stranger**  
 Classic Agatha Christie mystery thriller adapted by Louise Page

**18th to 29th August**  
**Tons of Money**  
 The Best of British roaring-twenties Farce by Will Evans & Arthur Valentine

Evenings 7:30pm (Mon to Sat). Matinees (Thurs & Sat) 4pm Tickets £18 or £24

**TO BOOK: 01728 343344** (without fees).  
[www.ticketsource.co.uk/](http://www.ticketsource.co.uk/)  
[southwoldandaldeburghtheatre](http://southwoldandaldeburghtheatre) (fees apply)  
[www.actco.uk](http://www.actco.uk) @aldeburghclassicaltheatre

## The Railway Inn

*A true freehouse at the heart of the Aldeburgh community.*

Traditional pub with a warm welcome!  
 Located at the top of the town as you come into Aldeburgh, just a 5 minute walk to the beach.



- Live music every weekend - check our FB and Instagram pages to see whats on this month
- Great choice of lagers, ales, spirits and cocktails
- Dogs welcome
- Disabled access + facilities
- Pool table, dart board, cards and games available!
- Rooms and Food coming soon!

**Our opening times:**  
**Mon - Thurs 12-11 | Fri + Sat 12-12**  
**Sun 12-10:30**

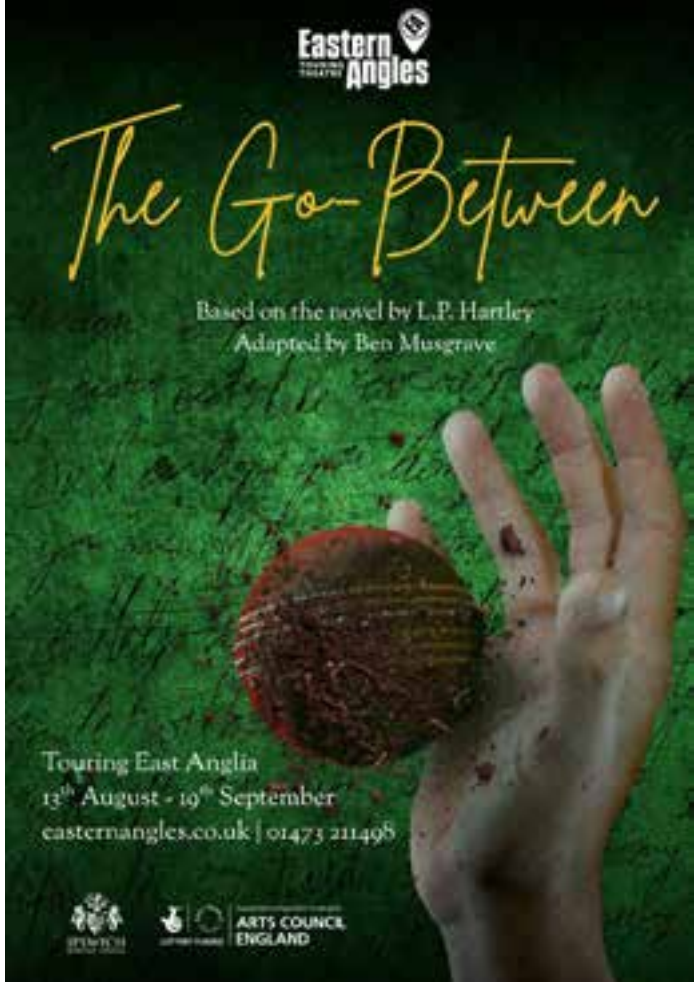
**f therailwayinnaldeburgh** **@ therailwayinn\_aldeburgh**

1 Leiston Road, Aldeburgh IP15 5PP  
**07495 918642**

**Eastern Angles Theatre**

# The Go-Between

Based on the novel by L.P. Hartley  
 Adapted by Ben Musgrave



Touring East Anglia  
 13<sup>th</sup> August - 10<sup>th</sup> September  
[easternangles.co.uk](http://easternangles.co.uk) | 01473 211498

ARTS COUNCIL ENGLAND

## NEW FARM SHOP FOR DARSHAM

The Crickmore Family from Fen Farm Dairy are set to open their third farm shop in early June, in Darsham, Suffolk. Their third-generation farm, which is 14 miles down the road in Bungay, is well known for their brie-style Baron Bigod cheese, their cultured Bungay Butter and their fresh raw milk, which draws customers in from around the UK.

*"When the opportunity arose to buy an old agricultural building just off the A12, we couldn't resist" explained Jonny and Dulcie.*

*"The surrounding Suffolk coastline is our home. We spent our childhoods exploring these towns and villages and climbing trees in the local woods.*

*"It's always been a dream of ours to bring a slice of the farm a little closer to this coast - to share our products with the local community and holidaymakers."*

Customers at the new shop, which is based next door to the 2 Magpies Bakery on Hinton Road, can expect to find all of the produce which is handmade at their farm plus a selection of other East Anglian produce made by friends of Jonny and Dulcie, who share their passion for real food.

*"There will also be plenty of grab-and-go lunch and dinner options, for those on holiday wanting a quick and easy (but delicious) meal" said Jonny.*



Visit our new  
**FARM SHOP**



Raw Milk | Fresh Coffee | Cheese | Local Produce

Mon to Sat: 8am to 6pm

Sunday: 10am to 4pm

**Hinton Road, Darsham,  
Suffolk, IP17 3QS**

[fenfarmdairy.co.uk](http://fenfarmdairy.co.uk)

## CITIZENS ADVICE EAST

### Train with us to be a Citizens Advice volunteer!

We are always looking for people to join us. We asked a recent volunteer to describe her experience of the training, and the Citizens Advice team.

*"I had listened to a friend talking about being a volunteer at Citizens Advice and his enthusiasm was infectious. However, he is a retired lawyer so it made sense for CA to have snapped him up.*

*"Pushing the JOIN US button on the Citizens East Suffolk website was easy. Then the fear set in when the online form to apply appeared. As I filled in the form I became increasingly dubious about my credentials. I had owned and run a shop for 20 years. My computer skills were limited and I had no idea how to sign my completed form online, so I printed it off, signed it with a pen and posted it in a post box.*

*"I heard nothing so after a month I emailed the CAES CEO just for confirmation of my rejection. It turned out that my form had never reached her. Lesson one - everything is now digital.*

*"After an interview I was allocated what my sons laughingly called 'a handler'. She was an essential part of the training. Almost all the rest of the training is online. On first sight it is frankly terrifying and almost overwhelming. I am not a natural with a laptop. Cut and paste for me involves scissors and glue. The trainer takes you through every step and encourages you just to keep going. You do have to commit though and there is a lot of information to read. It also takes a while to get used to the enormous amount of capital letters and to remember what they all stand for. AA it turns out is Attendance Allowance, not a vehicle recovery service or a support group for recovering alcoholics. You do not have to know everything.*

*Laws on Welfare, Housing and Immigration change all the time. Lesson Two - the Citizens Advice 'Advisernet' provides most of the answers if you know which button to push.*

*"While you are ploughing through the internet training you also spend days at the offices. I went to Woodbridge and the outreach at Saxmundham library every week and saw how being a volunteer adviser actually works. The CA volunteers, supervisors and trainers are a fantastic team. They are full of enthusiasm and are endlessly supportive throughout the whole process. Everyone smiles and strives in equal measure to provide a wonderful service. It is genuinely rewarding and worth the hard work needed to qualify for the rota."*

If you would like to volunteer with us please email through our website: [www.caes.org.uk/email-service](http://www.caes.org.uk/email-service). For advice on any issue you can also email us. Or tel: 0808 278 7866 (lines open 10-2 Mon-Fri)

**1ST CUT**  
TREE AND FORESTRY SERVICES

**Crown Reductions** - to reduce risk of branch failure and improve light  
**Safe Tree Removals** - using modern rigging techniques / mobile cranes & mewsps  
**Site Clearances** - for development projects / re - landscaping

Fruit Tree Pruning • Hedge Cutting  
 Stump Grinding Services • Ready to Burn Firewood  
 NPTC Qualified Staff • Public/employers Liability Insurance  
 Free Advice & a Free Quotation

01986 798977 [george@1stcuttreeservices.co.uk](mailto:george@1stcuttreeservices.co.uk)  
[www.1stcuttreeservices.co.uk](http://www.1stcuttreeservices.co.uk)  
**PROFESSIONAL • RELIABLE • FULLY INSURED**

**SIBTON COUNTRY SUPPLIES LTD.**  
**GARDEN MACHINERY**

**New Season Deals**  
 Deals available on Lawnmowers, Strimmers  
 and all types of garden machinery

Wild Bird Food also available

The Forge, Sibton IP17 2JH | Tel. 01728 660 349

**RIVERVIEW GARDENING**  
 Garden & Grounds Maintenance

**Providing all aspects of garden and grounds maintenance to both domestic and commercial customers, Ride-on lawnmower available**

**Green waste removed**

**EXPERIENCED - QUALIFIED - INSURED**

Call Oliver - 07779152936 - 01728561990  
 Email - [riverviewgardening@gmail.com](mailto:riverviewgardening@gmail.com)

**JOHN BRIDGES**  
**GARDEN LANDSCAPER**

PATIOS | RAISED BEDS | FENCING  
 PERGOLAS | TURF LAYING

30 yrs experience

01728 832972 | 07787163249  
[bridgesjac@gmail.com](mailto:bridgesjac@gmail.com)

## WILD GARDEN STUDIO

Our gardens are places to socialise in, spend time in and garden in, however they play a much larger role in reversing the decline in biodiversity and curtailing the effects of climate change. The benefits gardens bring underpins the approach of the recently launched Wild Garden Studio who design and create gardens with a difference.

*"It's time we change our approach to gardens, so we create spaces which ground us, calm us and invite us in, allowing us to spend time with friends and family while also becoming hotspots for nature and having a positive effect on the planet."* says Jonathan Mitchell who directs Wild Garden Studio. *"We achieve this by working closely with clients to understand their needs and wants from their garden and creatively including the latest research in ecology to create spaces which are elegantly different"*.

Jonathan launched the new venture to run alongside the successful landscaping company Teasels Landscapes who for the last 15 years has built and maintained award winning gardens across Suffolk and Norfolk. Joined by Katy Haywood Smith, a young, creative garden designer whose passion for nature heavily influences the flowing, naturalistic style of her work, together they hope to inspire people to connect with nature through their garden while still experiencing all the other benefits gardens bring.

**WILD GARDEN**  
 STUDIO  
 DESIGN • CONSULTANCY • EDUCATION

**BEAUTIFUL GARDENS**  
 THAT GIVE  
 NATURE A HOME

Sustainable Garden Design  
 Planting for Biodiversity

Creating elegant, wild outdoor spaces.

From a full design package to garden coaching, we tailor our approach to suit your needs

**BOOK YOUR INITIAL CONSULTATION**  
**07875 462126**

[hello@wildgardenstudio.co.uk](mailto:hello@wildgardenstudio.co.uk)  
[WildGardenStudio.co.uk](http://WildGardenStudio.co.uk)

# UPGRADED BRITTEN PEARS BUILDING OPENS

Britten Pears Arts has announced the opening of the upgraded Britten Pears Building at Snape Maltings, marking the completion of the first phase of its Capital Programme, which will deliver increased activities for the organisation's communities, enhance lives and improve health through creativity.



Photo: Britten Pears Arts

The modernisation of the Britten Pears Building – originally converted in 1979 – was led by architects De Matos Ryan and built by Hutton Construction. A new lift has been installed to ensure that everyone can use the revamped studios and performance spaces. Five larger music studios have been created, and all technical facilities modernised. The upper floor has been transformed into a state-of-the-art Clore Learning Space thanks to generous support from the Clore Duffield Foundation. The building is now thermally and acoustically insulated. The Britten Pears Building will be the home of the O'Hare Music Centre, which is the umbrella term for the organisation's work focussed on growing the future of classical music, encompassing their Artist Development and Children, Families and Young People strands, as well as their work at the intersection of arts & health. A new significant partnership with the Norfolk & Suffolk Music Hub will enable Britten Pears Arts to grow their work for and with Children and Young People significantly across the next few years with a new focus on developing musical engagement with young people who are unable to access mainstream education and introducing opportunities for home schooled young people or those attending Pupil Referral Units, as well as a greater focus on developing resources for Special Educational Needs and Disabilities (SEND) music provision.

The Britten Pears Young Artist Programme is also based here and this Festival sees the inaugural Festival Academy taking place. The Summer Academy (to take place in August) will welcome a cohort of international young artists to work alongside tutors.

## Phase Two: Restoring Snape Maltings Concert Hall

Britten Pears Arts was recently awarded a £1.9 million Creative Foundations Fund (CFF) grant by Arts Council England, enabling the second phase of its major capital programme to proceed. The grant will go towards the cost of restoring Snape Maltings Concert Hall, with work commencing in January 2027.

It will be completed in time for the 2027 Aldeburgh Festival and will deliver essential, urgent repairs and upgrades to Snape Maltings Concert Hall which has remained largely unchanged since 1999, with some of the infrastructure dating back even further to 1970 when it was rebuilt after a fire, so these works are vital.

## Public Fundraising Campaign

Having already raised £14.1 million for work on the Britten Pears Building Snape Maltings Concert Hall, Britten Pears Arts has launched a seat naming campaign, with supporters invited to name concert hall seats for £1,000 (front section of the hall) and £600 (rear section). Prototype seats will be available in the inner foyer for audience members to test and give their feedback on.

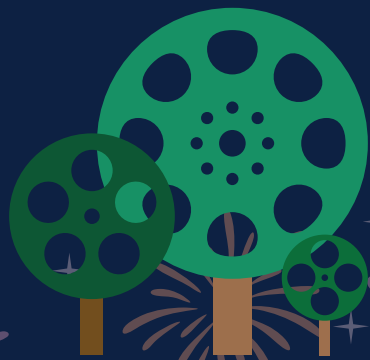
Britten Pears Arts' fundraising efforts are now focused on raising a further £3.6 million for flood defences and air cooling. For many years it was planned that Snape Maltings would be protected through a comprehensive estuary-wide scheme, delivered by the East Suffolk Water Management Board and funded by the Environment Agency. However, the wider project has suffered delays and set-backs, and there is currently no major public funding available. As this work is a high priority, Britten Pears Arts has taken the decision to pursue an independent scheme.

Britten Pears Arts' Chief Executive, Andrew Comben said: *"It is thrilling to see the Britten Pears Building opened and in use for this year's Aldeburgh Festival and it will be transformational in the expansion of our work with children, young people, the community and Creative Health."*

*"We are so grateful to all the funders who have contributed to the £14.1 million we have so far raised, that has enabled our vision to start to become a reality. We now need to urgently focus our attention on securing the remaining funds needed to raise the Snape Maltings flood defences, as we are at high risk of flooding. Snape Maltings is a special place, and I hope people might consider donating even a small sum. When all phases are complete, Britten Pears Arts' £17.7 million Capital Programme will realise the organisation's plan to create a truly sustainable and accessible creative campus. Our founders Benjamin Britten and Peter Pears believed in the power of the arts to connect and be useful to communities. Their vision was for Snape Maltings to be a Creative Campus and this work will help more communities enjoy this very special place, from artists and performers through to visitors and audience members."*

## Funding for the Capital Programme

The Britten Pears Arts Capital Programme is supported with public funding from Arts Council England, and trusts & foundations and individual donors. Further information about the campaign and how to contribute is available from Emily Stubbs ([estubbs@brittenpearsarts.org](mailto:estubbs@brittenpearsarts.org)) and Alison de Zoete ([adezoete@brittenpearsarts.org](mailto:adezoete@brittenpearsarts.org)).



# LEISTON CINEMA IN THE PARK

JOIN US TO CELEBRATE 50 YEARS  
SINCE LEISTON TOWN COUNCIL  
SAVED OUR FILM THEATRE

18:00 GATES

19:30 FILM STARTS

21:10 FIREWORKS

SCREENING OF  
**PADDINGTON  
IN PERU**

LOTS OF  
**FAMILY  
ATTRACTIONS**

PLENTY OF  
**FOOD, DRINK  
& FIREWORKS**



WHEN

**SATURDAY  
1ST AUGUST  
2026**

WHERE

**VICTORY  
ROAD  
RECREATION  
GROUND**

TICKETS

**FREE  
ADMISSION**



# MARMALADE AT THE READY

## Leiston to host free open-air Screening of Paddington in Peru

- Showing marks 50 years since the Town Council saved Leiston Film Theatre
- Film being shown at Victory Road Recreational Ground on Saturday 1 August
- Event supported by Sizewell C, Leiston Film Theatre, Leiston-cum-Sizewell Town Council, Long Shop Museum, and Leiston Events Group

Get the marmalade sandwiches ready - Leiston is gearing up to host a free open-air screening of Paddington in Peru this summer.

Delivered in partnership with Sizewell C, The Long Shop Museum and Leiston Events Group, the event will celebrate 50 years since the Town Council saved the much-loved Leiston Film Theatre.

Taking place at Victory Road Recreational Ground on **Saturday 1 August**, the event promises a bear-y special evening, complete with food and drink stalls and a fireworks finale to round off the celebrations.



Wayne Burns, General Manager of Leiston Film Theatre, said: "I am so pleased that our community can gather together to celebrate the fact that our town is home to Suffolk's oldest cinema. The Town Council made a bold move in 1976 when they effectively saved the town's cinema, not only securing the venue's continuation, but also as a major asset for Leiston. It's not always been easy, but the Film Theatre remains, thanks to the Town Council's ongoing commitment and belief in its cultural importance."

Paddington in Peru was selected by the community through a vote on Leiston Film Theatre's Facebook page.

The much-loved bear triumphed over strong competition from Disney's live-action Lilo and Stitch, and A Minecraft Movie.



Marjorie Barnes, Head of Public Relations at Sizewell C, said: "We are incredibly proud to sponsor this special event and to play a part in celebrating such an important milestone for Leiston.

"The Film Theatre holds a unique place in the town's history, and it will be wonderful to see the community come together to celebrate its legacy in such a memorable way. Events like this create lasting memories for families and bring people closer together, and we're honoured to support an evening that showcases the very best of community spirit."

Originally opened as the Leiston Picture House in October 1914, Leiston Film Theatre has been a cornerstone of the town's cultural life for 111 years. After a decline in cinema attendance in the 1970s, the venue was saved from closure in 1976 by the Town Council, which has since invested in carefully updating the building to meet the expectations of today's audiences.

Today, the cinema continues to bring people together, standing as both a historic landmark and a thriving community asset at the heart of Leiston.

Nicky Corbett, Mayor of Leiston, said: "Leiston-cum-Sizewell Town Council is justifiably proud to be responsible for the continued longevity of our fantastic Leiston Film Theatre. Thanks to the foresight of our predecessors back in 1976, the venue continues to be our Council's jewel in the crown. This celebration will no doubt be an outstanding success and it's great to see how joint working between our sponsors Sizewell C, the Town Council and the Leiston Events Group has resulted in such a tremendous, family event for our town. We can all look forward to an exciting evening. Marmalade sandwiches are optional, of course."

Gates open at 18:00, with the film starting at 19:30. Fireworks will begin shortly after the film ends.

# ALDE FENCING

*Agricultural, Domestic, Commercial,  
Repairs & Gates*

For a free quotation please contact Adam on

01728 633144 | 07896 766719

adamblowers@btinternet.com

www.aldefencing.com

# PEARCE & KEMP

LIMITED

**Tel: 01986 872130**

enquiries@pearce-kemp.co.uk • www.pearce-kemp.co.uk

Unit 20, Halesworth Business Centre, Norwich Road, Halesworth IP19 8QJ

**DOMESTIC • COMMERCIAL • INDUSTRIAL • STREET LIGHTING**

**REWIRING • LIGHTING • EXTRA SOCKETS • SHOWERS  
ECONOMY 7 HEATING • PORTABLE APPLIANCE TESTING  
INSPECTING & TESTING • DATA CABLING • EMERGENCY LIGHTING  
FIRE ALARM INSTALLATIONS • FREE ESTIMATES  
PART P INSTALLERS**



**OVER 50 YEARS EXPERIENCE**



*Based in Melton, covering Suffolk  
Over 20 years experience*

- Boilers & central heating
  - All range cookers
  - Multi fuel stoves & flues
  - Hot water systems (vented & unvented)
- Service, repair & installation
  - Gas, oil & solid fuel
  - Plumbing works



Contact Jef on: 07392 048270  
titmarshheating@gmail.com



## BUILDING & ROOFING

**T: 01728 451933 M: 07831 700135**

**W: www.ianculf.co.uk E: ianculf@hotmail.co.uk**

*For All Your Roofing & Building Requirements*

**FREE ESTIMATES 30 YEARS EXPERIENCE**

Brickwork, Flat roofs, New roofs, Roof repairs, Lead work,  
Conversions, New builds, Paving, Fibreglass roofing,  
Rubber Roofing, General repairs & Maintenance etc.



Checkatrade.com



General Building • Decoration  
Property Maintenance • Carpentry  
Plumbing • Electrical • Kitchens & Bathrooms  
Roofing • Windows & Doors  
Carpets & Flooring • Interiors



Tel: (01728) 453146 Mob: 07831809494

email: enquiries@colourbankaldeburgh.co.uk

**www.colourbankaldeburgh.co.uk**

*Client & Professional References Available*

## FROM JENNY RIDDELL-CARPENTER, MP



I have been continuing my campaign for better rail services across Suffolk Coastal, particularly on the East Suffolk Line between Lowestoft and Ipswich, where residents have repeatedly raised concerns about frequency and the need for earlier morning and later evening services.

This work has included bringing together key partners to focus on practical solutions. Recently, I hosted a roundtable in parliament with Greater Anglia, Network Rail and local authorities to look at how we can improve services and ensure our communities benefit from stronger, more reliable rail links. I will also be hosting a further roundtable later this month to continue that work and maintain pressure on delivering improvements for local passengers.

One of the ongoing issues I have been raising is the impact of a new evening service between Lowestoft and Beccles which does not currently extend into communities across Suffolk Coastal.

I have been told this is due to freight paths being used for Sizewell C construction materials during evening and overnight slots.

While I strongly support the principle of getting freight off our roads and reducing HGV movements through our towns and villages, I am concerned that this arrangement is limiting the opportunity to provide better passenger services for local people.

I have raised this directly with Sizewell C, Network Rail, Greater Anglia and local partners, and also with the Rail Minister, Lord Hendy. Following our meeting, he has written to me confirming that he shares these concerns and has asked Sizewell C, Greater Anglia and Network Rail to look again at whether freight services can be adjusted to allow improvements to the passenger timetable.

If that is not possible, I will continue pressing for alternative solutions, including the potential for an evening bus service funded through Sizewell C to ensure local communities are not left without transport options.

Better rail services would make a real difference to daily life in our area - supporting workers, students, local businesses and the wider visitor economy. I will continue working with partners and using the July roundtable to push for clear answers and practical improvements for residents across Suffolk Coastal.

As always, my team and I are here to help with any local issues you may be facing. If there is something we can support you with, please do get in touch.

### Contact:

[jenny.riddellcarpenter.mp@parliament.uk](mailto:jenny.riddellcarpenter.mp@parliament.uk)  
**01394 330260**  
[www.jennyforsuffolkcoastal.org](http://www.jennyforsuffolkcoastal.org)

## FRAMLINGHAM AND SAXMUNDHAM CATS PROTECTION

Unwanted litters continue to arrive in our care. As I write, a family of six, five week old kittens, has just been found and brought to safety. A heavily pregnant female has also come into foster care and is now awaiting the birth of her kittens. This is in addition to other litters already in care. By the time you read this, we will almost certainly have more tiny mouths to feed. If you feel you could help with a donation, of money or food, or a gift from our Amazon Wishlist, please see our website for details.

This is a timely reminder: if you have a young cat, please make sure it is neutered. Whether male or female, speak to your vet about the right time to castrate or spay. Neutering is recommended at around 16 weeks of age and is the most effective way to prevent accidental litters. Neutering doesn't just prevent unwanted litters, it also reduces roaming, curbs fighting, and helps keep cats safer and healthier overall. Please help us reduce the number of unwanted kittens. For owners on benefits or a low household income, the branch may be able to help with the cost of neutering. Call us or visit our website to find out more.

**Date for your diary:** Come and visit our fundraising stall at the Woodbridge Regatta, Ferry Quay IP12 1BW on **Sunday 19th July**.

Save the date: **Friday, 25 September 2026**. After the huge success of last year's fundraising Quiz Night, we're delighted to announce another - this time at the Fromus Centre in Saxmundham. Teams of up to six people are welcome, and tickets are £5 per person. To book your places or find out more, email: [fundraising@framandsax.cats.org.uk](mailto:fundraising@framandsax.cats.org.uk)

**Cats / Kittens Looking for Homes:** Many of the kittens mentioned above will be looking for their new start in life shortly and can be seen on our website and our social media pages. Website: [www.cats.org.uk/framandsax](http://www.cats.org.uk/framandsax); Email: [enquiries@framandsax.cats.org.uk](mailto:enquiries@framandsax.cats.org.uk); Tel: 01728 723499.



# Nathan Hunt Tree Services



**Fully qualified and insured arborist and Professional Tree Inspector**

All aspects of tree work covered  
 Tree Surveys • Arboricultural Reports  
 Crown reductions • Land Clearance  
 Tree Planting • Stump Removal  
 Felling • Firewood

Call Nathan on  
**07900 734124**  
 Nathan.khan15@gmail.com



## HOLMES GLAZING

NEW Specialist Suppliers of Zero 90 Triple Glazed Systems



UPVC Timber & Aluminium Windows & Doors  
 Glass cut-to-size  
 Repairs & Maintenance  
 Hardie Plank Cladding  
 Fascia, Soffit & Guttering  
 Mirrors & Coloured Splashbacks  
 Double Glazed Units & Specialist Glazing  
 Conservatories, Porches & Warm Roofs

**01728 648678**  
[www.holmesglazing.co.uk](http://www.holmesglazing.co.uk)  
[holmes.glazing@yahoo.co.uk](mailto:holmes.glazing@yahoo.co.uk)

Zero90 range is the 1st of its kind in the UK  
 • 90mm Casement  
 • 48mm Triple Glazed  
 • Unrivalled Energy Saving



# I.C.KING LTD

## Painters and Decorators

[www.ickingltd.co.uk](http://www.ickingltd.co.uk)

5 The Green, Chediston,  
 Halesworth, Suffolk, IP19 0BB  
 Tel: 01986 785281 Mob: 07944 647553  
 Email: [ickingltd@gmail.com](mailto:ickingltd@gmail.com)




## Garden Rooms, Timber Buildings & Outdoor Living



Garden Rooms • Cartlodes • Gazebos & Pergolas  
 Decking Kits • Pet Housing  
 Built in Suffolk. Made to last.  
 Bespoke / Standard Design & Builds



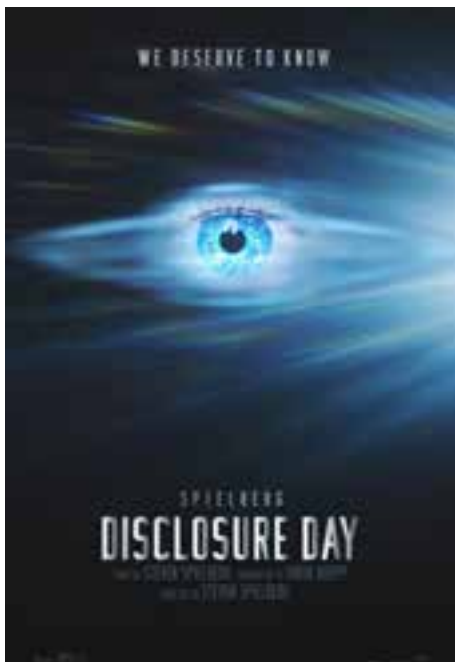
**01449 711598 | [mickfieldtimberproducts.co.uk](http://mickfieldtimberproducts.co.uk)**

# JULY AT ALDEBURGH CINEMA...

Two huge 4K movies this month from two titans of film – Steven Spielberg and Christopher Nolan.

If you found out we weren't alone, if someone showed you, proved it to you, would that frighten you? This summer, the truth belongs to eight billion people. We are coming close to ... **DISCLOSURE DAY**.

From Steven Spielberg, the director who brought us landmark alien encounter movies *Close Encounters of the Third Kind* and *ET: The Extra Terrestrial* (no, we're not mentioning *Indiana Jones* and *The Kingdom of the Crystal Skull*) comes his latest big screen spectacular, with an all-star, very British cast that includes Emily Blunt, Josh O'Connor and Colin Firth.



Christopher Nolan's new film, **THE ODYSSEY**, is a mythic action epic shot in locations across the world, which brings Homer's foundational saga to screens like never before.

Written and directed by Nolan, the movie features an array of talent onscreen and off, combining the latest visual effects and filming technology with an array of exceptional performers, including Matt Damon, Tom Holland, Anne Hathaway, Robert Pattinson and Lupita Nyong'o, with Zendaya and Charlize Theron.

A 4K experience not to be missed.



Our July programme isn't finalized at the time of going to print, but we also anticipate bringing back:

**VIRGINIA WOOLF'S NIGHT AND DAY** - an un-romantic comedy about a passionate astronomer, Katharine Hilbery, who does everything she can to avoid romantic love and marriage. Starring Haley Bennett, Elyas M'Barek, Jennifer Saunders, Jack Whitehall and Timothy Spall star.



**TUNER** - Dustin Hoffman, Leo Woodall and Havana Rose Liu star in, where a gifted piano tuner's meticulous skills lead him to discover an unexpected aptitude for cracking safes, turning his life upside down.

We also hope to show **POWER BALLAD** - When Rick (Paul Rudd), a past-his-prime wedding singer, meets fading boy-band star Danny (Nick Jonas) during a gig, the two bond over music and a late-night jam session. But when Danny turns one of Rick's songs into the hit that reignites his career, Rick sets out to reclaim the recognition he believes he deserves - even if it means risking everything he cares about.

Please visit [aldeburghcinema.co.uk](http://aldeburghcinema.co.uk) for full details about what's on and when. There, you can also book tickets and easily sign up to our regular email newsletter. We're also on X, Instagram and Facebook.

**HIGHLANDER – 40th ANNIVERSARY 4K SCREENING + Q&A**  
**Saturday 11th July – 6.45pm**

Join us as we celebrate this (cult) classic of British cinema, starring Christopher Lambert and Sean Connery, with a legendary Queen soundtrack. With interest in the Highlander universe at an all-time high given the anniversary and the all-new remake currently in production (starring Henry Cavill and Russell Crowe) we're thrilled to welcome to our stage author and all-round Highlander-guru Jonathan Melville for an intro and post-film Q&A that's sure to be a kind of magic.





**Endoscopic Micro-Suction and Water Irrigation**

A unique country practice in a beautiful location offering both mobile and clinic appointments. Lisa, Naomi and Tanya are all highly trained by ENT Consultants and offer an expert, tranquil and friendly appointment.

Endoscopic Micro-Suction | Removal of Foreign Bodies  
Water Irrigation | Free ear health checks



- Adults and Children
- Parking on-site
- Amazing 5 star reviews
- Satellite clinic in Aldeburgh Pharmacy
- Fully Insured
- Reception Team
- Online Booking
- Over 30 years experience

01379 772 620 0773 888 5858 [lisa@suffolkearcare.co.uk](mailto:lisa@suffolkearcare.co.uk)  
Laxfield Cabin, Framlingham Road, Laxfield, Suffolk, IP13 8HD

# FOR ALL YOUR PRINT & SIGNAGE

**LEISTON PRESS**  
PRINTING | SIGNAGE | PUBLISHING

01728 833003  
[hello@leistonpress.com](mailto:hello@leistonpress.com)  
[leistonpress.com](http://leistonpress.com)  
Unit A2, Masterlord Ind Est  
Leiston, Suffolk IP16 4JD



Your Smile. Our Reward.



**Our Services**

- ✓ General Dentistry
- ✓ T-scan Bite Analysis
- ✓ Clear Aligners
- ✓ Dental Implants
- ✓ Tooth Whitening
- ✓ Cryotherapy
- ✓ Smile Makeovers
- ✓ Hygienist Appointments
- ✓ 2D and 3D Imaging
- ✓ Patient Care Co-ordinator
- ✓ Facial Aesthetics
- ✓ Body Sculpting

**Contact Us :**

01986 873001  
[PCO@dynamic-dental.co.uk](mailto:PCO@dynamic-dental.co.uk)  
Dynamic Dental Studio,  
The old creamery,  
Halesworth, IP198SW  
[www.dynamic-dental.co.uk](http://www.dynamic-dental.co.uk)

**Opening hours**

Monday	8.30am - *7pm
Tuesday	8.30am - 5pm
Wednesday	8.30am - 5pm
Thursday	8.30am - *7pm
Friday	8.30am - 2pm
Saturday	Closed

\*Hygienist appointments available after 5pm with Rita Hendley



## Contemporary PILATES with Chantel

MOVE SMARTER. LIVE STRONGER.  
START HERE.



This is Pilates, evolved.

Classical methods meet 10 years experience as a specialist Personal Trainer.

Build strength, improve posture and gain resilience for daily life.

All ages and abilities welcome.



**TUESDAY**  
7.00pm  
Saxmundham & live via Zoom

**THURSDAY**  
9.30am & 7.00pm  
Leiston



To book please scan the QR code, or visit [www.chantelfitness.co.uk](http://www.chantelfitness.co.uk)

# TILLEY & GRACE OPENS THE DOOR TO ITS WAREHOUSE HQ



On **Saturday 4th July and Sunday 5th July**, Tilley & Grace is doing something they've never done before. The family-run Suffolk boutique is opening its warehouse in Earl Soham to the public for a two-day shopping event.

Founder and CEO Sally Hicks started Tilley & Grace when she was in her late fifties with no prior retail experience. She now runs Tilley & Grace with her two daughters and employs 35 women across Norfolk and Suffolk in its Head Office and four stores in Aldeburgh, Holt, Southwold, and Woodbridge.

During the event, everything is for sale. There'll be end-of-line pieces, samples, wholesale-only stock that's never been in store, and brand-new products. Selected items will be available at special event pricing, and every purchase made at the event will earn double Pink Points.

Alongside the exclusive discounts, T&G are using the weekend to hear directly from their customers. Shoppers will have the chance to directly influence the future of the brand, providing feedback on the ideal in-store and online experience, and on what they really want to see on the rails.

*"Starting a business later in life without a background in retail was certainly a leap of faith, but our focus on personal customer service has been the secret to our success. Opening our warehouse doors is our way of saying thank you, while also listening directly to our customers so we can continue delivering an unrivalled shopping experience to our loyal customers."*

**Saturday 4th July & Sunday 5th July, 10.30 am - 3 pm @ 38 Yew Tree Courtyard, Framlingham Road, Earl Soham IP13 7SG. Free parking on-site. [www.tilleyandgrace.co.uk](http://www.tilleyandgrace.co.uk)**

## DATES FOR YOUR DIARY

**JUL 5 SWT Wildlife Open Garden.** Beautiful large garden, with recently created wildflower meadow and prairie style planting. Established wall garden, orchard, pond and moat with 2 bridges. (please note pond and moat unfenced). Refreshments available to purchase. Free entry. Card or cash (preferred) donations. No dogs. What 3 words: workroom.cattle.swanky. 11am – 4pm @ Wolseyhouse Farm, Hog Hill Lane, Strickland Manor Hill, Yoxford IP17 3JF

**JUL 8 Sizewell Creative presents: KING ARTHUR REIMAGINED: Voicing the land. A vibrant mythic celebration, this unique event unites classical and folk, past and future, community and professional.** All with Purcell's vibrant music at its heart, in a theatrical production featuring Norwich Baroque, conducted by Tim Brown, movement provided by Vanhulle Dance Theatre, and with special performances of Gecko Theatre's acclaimed outdoor show, From Here On. 2pm & 7pm Snape Maltings Concert Hall.

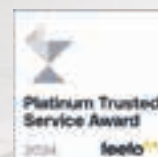
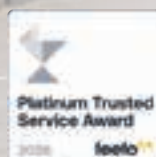
**JUL 27 Lunchtime Classical Concert Series.** The highly successful Lunchtime Classics Concert Series in aid of Save the Children continues with a Summer Concert to include early works by Mozart, Elgar and John Dowland, played by Helen Stanley (Violin), Nadia Lasserson (Piano) and the return visit of Tom Hodgkinson (Guitar). Admission is free, with a retiring collection for Save the Children. All very welcome. 12noon at Aldeburgh Parish Church.





**attwells**  
Solicitors

## Legal Services for Woodbridge and the Surrounding Areas



**At Attwells Solicitors, we provide expert support in conveyancing, Wills, Lasting Powers of Attorney and Probate, helping you make confident decisions at every stage of life.**

We offer clear, practical advice with a friendly, personal approach. Whether you are moving home, planning ahead, administering an estate or updating your Will, our experienced team is here to guide you every step of the way.

With the opening of our Woodbridge office, we are proud to serve clients across Woodbridge and the surrounding areas with trusted, accessible legal support.



**Call now on 01394 334500**



**attwells.com**

### Why Choose Attwells Solicitors?



#### Plain-English Advice

We avoid complicated terminology when communicating with you and adapt our service to suit your needs.



#### Same Day Call Back

Don't you hate it when your Solicitor never calls you back? We commit to returning your call on the same day if you call before 3pm. We will also provide you with regular updates on the progress of your matter.



#### Trusted Advisor

We promise to support you in achieving the best possible outcome and therefore if we can't help we will always recommend someone who can.

# HUBFEST 2026!

Let's hope that Saturday 1st of August is firmly engraved in your minds or on your calendar. This is an annual event not to be missed. It will sneak up upon us before we know it. Bigger and better than before, Hubfest is the Glastonbury of Huntingfield but without the mud and in the absence of a cowshed.

We are so fortunate to have some amazing bands and artists lined up. We have a mix of genres for even the most discerning music taste. Starting off and opening the event at 1pm on stage 1 will be the hugely talented **Matt and Jon**, playing an acoustic mix of well-known covers, with their duelling guitars and haunting harmonies. Arrive as early as you can, so not to miss one of the best performances of the day.

**2.10pm to 2.45pm** on stage 2 the **Halesworth Ukulele Band** will be performing those toe tapping rhythms. In bright Hawaiian shirts and demeanour to match they will play a set of popular and well known songs, accompanied by Chris Turner on bass and Andrew Hyde on lead electric ukelele.

On at **2.45pm** on Stage 1 we are lucky to have the exceptional talent of **Steve J Curtis**, a local professional singer songwriter, playing a mix of blues, country and Americana.

At **3.45pm** on stage 2 we have a four-piece band, called '**Ain't Bitter and Twisted**' comprising of double bass, guitar, violin and vocals playing an eclectic mix of 'twisted' folk, along with a bit of country and pop. They are joining us all the way from down south.

At **4.30pm**, often described as Suffolk's Finest Rocking Blues Band, **The Blyth River Blues Band** are a classic Chicago-style Rockin' Blues band playing the music of B.B. King, John Lee Hooker, Howling Wolf, Z.Z. Top, Peter Green's Fleetwood Mac, and many more, to an exhilarating and professional standard.

At **6.15pm** the **Zig Zag Box Cars**, a four-piece band, of drums, rhythm and bass guitar and vocals, will play well known 60s, 70s and maybe some 80s, popular covers. A recently formed band (in the last two years), going from strength to strength.

At **8.00pm** our headlining and final band, **The Annex** who burst out of nowhere in 2024 to take East Anglia's previously undiscovered electro-art rock scene by storm. With pumping bass riffs by Richard Bassett and Ju Brooks welded to hypnotic beats, vocalist/lyricist Ben Sharratt nails the melodrama and jeopardy of Halesworth market town life.

In addition we have a number of food stalls catering for all preferences and tastes, along with craft and similar stalls. Of course, the Huntingfield Arms will be providing a bar.

The event runs from **1pm to 9pm** and tickets can be obtained at a discounted price of £9 from the Huntingfield Arms in advance or £10 on the gate on the day. Free parking in the field, curtesy of Heveningham Hall. Any queries: [huntingfieldhubfest@gmail.com](mailto:huntingfieldhubfest@gmail.com)

**The Hubfest team: David, Peter and Jeannette**

1st August 1pm to 9pm  
**HUB FEST 2026**  
 Millennium Green, Huntingfield, Suffolk, IP19 0QH

**THE ANNEX**  
**MATT & JON**  
**STEVE J CURTIS**  
**ZIG ZAG BOX CARS**  
**BLYTH RIVER BLUES BAND**

BAR • STREET FOOD • STALLS  
 £10 PER TICKET BUY ON THE GATE  
 OR TICKETS AVAILABLE NOW FROM THE HUNTINGFIELD ARMS

**Discover**  
**Explore**  
**Support Landguard**

**Landguard Nature Reserve**  
 1.5 Miles of natural beach fronted beauty

**Felixstowe Museum**  
 14 rooms of local history

**Landguard Fort**  
 400 years of coastal defence

**3 Sites**  
**1 Great Day Out**  
**For the whole family**

DESTINATION  
**LAND GUARD**  
 FELIXSTOWE

Where guarding the land means so much more

Scan to learn more

# PROJECT UPDATE

## JULY 2026

As we enter the summer, we are finalising work to complete the construction phase of Yoxford and Friday Street roundabouts at the end of July.

Traffic cones and compounds will be removed at Yoxford, and the roundabout will be handed over to Suffolk County Council Highways. At Friday Street, traffic management will be significantly reduced, however access to the construction of the two-village bypass for Stratford St Andrew and Farnham will continue. Grass seed will now be sown ahead of further planting in the autumn.

Along the B1122 corridor the required smaller road closures are being implemented. Pretty Road is now closed for the duration of the Sizewell Link Road construction. Further down the B1122, the Moat Road junction remains closed, however Abbey Lane has now reopened and Buckleswood Road is due to be fully opened without traffic management in mid-July.

Road safety improvement works along the A12 continue in Marlesford. A temporary speed limit is in place to ensure the safety of all road users as the pedestrian crossing is installed, pavement and road junctions improvements and upgrades are all carried out. These works are due to be completed in the late summer.

Work at our Park and Ride sites continue, with further capacity being increased at the Wickham Market site with the access roads now complete. The roundabout at the park and ride in Darsham continues to progress, with the required traffic management now lifted at peak times. Willow Marsh Lane has now been reopened to traffic, pedestrians, and cyclists.

The rail link work continues at pace, with all the tracks laid for the temporary rail line around Leiston installed and trains beginning to run in and out of the temporary construction area. Over the coming months level crossing gates will be installed or upgraded along both the Saxmundham to Leiston, and Ipswich to Lowestoft branch lines, specifically at Melton and Darsham. This will require road closures and traffic management throughout installation.



All our works and planned road works can be accessed on our Works Tracker. Please sign up to receive bespoke alerts via email or SMS.

Thank you for patience during these works. To find out more about the progress of the works, the next round of community forums are:

**Main Development Site Forum**

Wednesday 8 July 18:00, at the Leiston Town Athletic Association (LTAA)

**Northern Transport Forum**

Wednesday 5 August 18:00, at the High Lodge, Darsham

For more information and for more forum dates visit [sizewellc.com/community/forums](https://sizewellc.com/community/forums)

\*Calls to 0800 numbers are free from UK landlines. Call costs from mobile and international numbers may vary.



# LEISTON FOOTBALL CLUB

## JOAO LOOKING AHEAD TO NEW SEASON

Leiston's Timor-Leste international Joao Rangel admits the trust and support he has received at Leiston made it an enjoyable first season for him at the Flannery Stadium. And he tells Blues fans, "There is more to come" as the new campaign hones into view.

The attacking winger, who joined the Blues from Lowestoft a year ago, scored twice in the first three games for Chris Wigger's side, against Halesowen Town and Banbury United last campaign. It helped him settle in nicely to kick on from there. "I feel like I've settled in really well early on," Rangel said.

*"The players made me very welcome and made it easy for me to fit into the group. Chris Wigger put a lot of faith in me this season, giving me the opportunity to play consistently and for 90 minutes, which as a player, is important. I'm grateful for the trust from the staff and the support from everyone around the club."*

Rangel ended up with eight goals overall, from 42 appearances in his first full season at the Flannery Stadium. However, he missed games in October 2025 and March this year as he headed off to play for Timor-Leste in the Asian Cup Qualifiers. The Blues playmaker made his debut away against the Philippines and scored a debut goal in first half stoppage time, although Timor-Leste went on to lose the game in the second half, 3-1.

He then played against the Maldives in their last group match, losing 2-1, before scoring again when Timor-Leste beat Brunei 3-0 last month in a Hyundai Cup clash.

*"Representing your country is one of the best feelings you can have as a player and it's something really hard to describe,"* Joao added.

*"It's always an honour to wear the badge and I'm really looking forward to going away with the team this summer."*

On looking ahead to a new season, Joao is keen to improve individually and help the Blues finish higher in the table this season.

He said: *"The main goal is just to help the team as much as possible, to push for the play-offs and improve on what we achieved last season. Personally, I just want to keep developing my game, stay consistent and contribute wherever I can for the team."*

Joao will be back in pre-season at the end of June with Leiston.

For information on all things Leiston FC, head over to [www.leistonfc.co.uk](http://www.leistonfc.co.uk) or follow Leiston FC on X, Facebook, WhatsApp, TikTok and Instagram. Season tickets for the new season, as well as sponsorship packages, including are popular Matchday Experience packages, are now available. Contact chairman, Andy Crisp on 07769 904555

All smiles: JOAO Rangel pictured with Leiston fans and the Timor-Leste flag.



# MODERN DAY MAGICK

## Witchy emporium casts a spell over paranormal researchers

Two 'ghost' writers have paid a visit to a local esoteric shop to chat about all things spooky and spiritual. The paranormal researchers called in at The Magickal Emporium in Halesworth Market Place to talk about their latest projects and hear what the shop owner had to say about modern-day magick.

Ann Green is Chief Reporter at Psychic News magazine, the world's longest-running spiritual magazine. She recently brought out a book about the ghosts of Halesworth and is still collecting local stories. John West also writes for Psychic News, has written books on the paranormal, works in film and podcast productions and is now a researcher for the hit spooky series Uncanny, hosted by the UK's 'Go-to Ghost Guy', Danny Robins.

The pair talked to Heather Taylor about her shop that stocks all things magickal including herbs, crystals, tarot sets, books and more. It also hosts events from gong baths to psychic development and tarot reading.

Heather, who goes by the title 'The Witch of Suffolk', opened The Magickal Emporium just over a year ago as a community hub that offers a peek into the witches' way of life in the present day. She set out to create "a sanctuary, a warm and welcoming space for all to experience and enjoy, no matter their background, their faith or stage in their life's journey."

Recently it was one of the venues for the popular Ink Festival, hosting a play titled 'The River Witch'. Heather aims to encourage more gatherings and to enable people to share their own otherworldly experiences without fear of judgement. She also hopes to help change the negative image that witches have held for centuries, which in the past has cost the lives of potentially innocent women and men.

Heather said: *"We are dispelling myths, educating and teaching about folklore and our craft. We encourage people to ask any questions they might have. We're always happy to talk about what we do, how we use our herbs for uplifting teas and wellbeing and for magick."*

*"We are women and men that have come together to remember and work with the changing of the seasons. We honour all life, there's certainly nothing evil about us!"*

After Ann and John enjoyed a refreshing herbal brew and talked about their work and future projects, Heather added:

*"Having Ann Green and John West here was an absolute pleasure. Ann's book 'The Haunted History of Halesworth' is a best seller in the shop, people love to know the local history of the paranormal!"*

*"We are so pleased to be stocking two of John's books, especially the recent one 'Britain's Haunted Land', signed by John himself. He has just published a new book called 'The Poltergeist Casebook', which we will soon have in stock. John has agreed to come back later this year to give a talk."*

Ann continues to collect local ghost stories and tales of the paranormal, particularly focusing on the villages of Wissett, Rumburgh and the Saints. If you have a genuinely spooky tale please email her at [annandco@btinternet.com](mailto:annandco@btinternet.com).

John's website is at <http://www.johnwestmedia.com/john-west---writer.html>

The Magickal Emporium is at 1 Market Place, Halesworth IP19 8BA.



Heather Taylor - 'The Witch of Suffolk'



John West & Ann Green

This issue was designed, printed & published by Leiston Press.

Aldeburgh Times is your free local paper, 2000 copies are printed every month. We distribute the magazines door to door and to many varied outlets. The next issue will be published Monday 3rd August, copy deadline is 14th July - but the earlier the better to ensure inclusion.

Contacts/Advertisers/Editorial:

Louise Gissing at Leiston Press, Unit 1b Masterlord Industrial Estate, Station Road, Leiston, IP16 4JD  
[lou@tidecollection.com](mailto:lou@tidecollection.com) Tel 01728 833003

Reports, press releases; letters and other editorial contributions with news value are all welcome but are accepted on the understanding that there is no guarantee of inclusion and that they will be selected and edited at the editor's discretion.

# PATMORE WATER SOFTENERS

Non  
Electric

Boiler  
Friendly

10 Year  
Guarantee

*6 South Entrance  
Saxmundham  
IP17 1DQ*

*Ipswich*

*Braintree*

**01728 633007**

**01473 713600**

**01376 334949**

**[www.patmorewatersofteners.co.uk](http://www.patmorewatersofteners.co.uk)**



# SIZEWELL LETTINGS

— SERVICED ACCOMMODATION —

WE PROVIDE LONG-TERM SERVICED ACCOMMODATION TO SENIOR ENGINEERING FIRMS



LET & FULLY MANAGED

Bruisyard Road, Rendham, IP17 2AH  
6 Bedrooms / 5 Bathrooms.

**ASKING RENT:**  
£7,300 Per calendar month



LET & FULLY MANAGED

Eastward Ho, Leiston, IP16 4AY  
4 Bedrooms / 3 Bathrooms.

**ASKING RENT:**  
£4,866 Per calendar month



LET & FULLY MANAGED

Westward Ho, Leiston, IP16 4HU  
3 Bedrooms / 3 Bathrooms.

**ASKING RENT:**  
£5,475 Per calendar month

**WE NEED MORE PROPERTIES – CALL US NOW.**

Engineering firms are seeking quality accommodation throughout Leiston, Saxmundham, Aldeburgh and the surrounding area.

Email: [hello@sizewelllettings.com](mailto:hello@sizewelllettings.com) Website: [sizewelllettings.com](http://sizewelllettings.com) Phone: 01728 677888



Suffolk Holiday Let Management & Marketing

**From coastal cottages to countryside retreats, Stay in Suffolk manages over 300 carefully selected holiday homes across Suffolk**



### Property management services for owners

Thinking of letting your Suffolk property? Our experienced local team provides a complete holiday letting and management service

### Interested in letting for Sizewell?

Our exclusive platform, [sizewellaccommodation.com](http://sizewellaccommodation.com) sees hundreds of visitors each week looking to stay whilst working at Sizewell Power Stations

**Only 5% commission for the first 3 months\***

\*plus VAT. Exclusions apply, contact us for details

[office@stayinsuffolk.com](mailto:office@stayinsuffolk.com) | 01728 885262

Find out more at [www.stayinsuffolk.com](http://www.stayinsuffolk.com)

