

# WOODBIDGE TALK



PART OF THE **TIDE COLLECTION**

# PATMORE

## WATER SOFTENERS



Non  
Electric

Boiler  
Friendly

10 Year  
Guarantee

*6 South Entrance  
Saxmundham  
IP17 1DQ*

*Ipswich*

*Braintree*

**01728 633007**

**01473 713600**

**01376 334949**

**[www.patmorewatersofteners.co.uk](http://www.patmorewatersofteners.co.uk)**

# A NOTE FROM OUR EDITOR




200 years of Civil Rights will be celebrated in Woodbridge this month and through to June. It is not widely known that two renowned anti-slavery and peace campaigners - Thomas and John Clarkson, lived in Woodbridge and nearby Playford. This new festival will celebrate the legacy of the Clarksons with a star-studded line-up at St Mary's Church (where John Clarkson is buried), as well as further music, art and family events. For more details of what sounds like great entertainment please see page 9.

Please drop me a line to boost your business by advertising with us, in any or all of our six titles, or if you have any news or events you would like to share with our readers. Email: [lou@tidecollection.com](mailto:lou@tidecollection.com)

### Quote of the Month

The time is always right to do what is right. - **Martin Luther King, Jr.**



**TIDE COLLECTION**  
A COLLECTION OF 6 FREE MAGAZINES

DISTRIBUTION OF 12000 DELIVERED  
DOOR TO DOOR & TO MANY VARIED OUTLETS

CONTACT **LOUISE GISSING** FOR PRICES AND QUERIES

[LOU@TIDECOLLECTION.COM](mailto:LOU@TIDECOLLECTION.COM)  
OR CALL 01728 833003

## INSIDE YOUR MAGAZINE...

TOWN COUNCIL NEWS 5  
- *New planting, Shire Hall repairs, Annual Town Meeting & more*

DISCOVER, EXPLORE, SUPPORT LANDGUARD 6 & 7  
- *Preserving one of Suffolk's most scientifically significant coastal landscapes*

WOODBIDGE FESTIVAL OF ART AND MUSIC 9  
- *Soul Star Lee John headlines events celebrating 200 years of Civil Rights*

THE GREAT GARDEN TRAIL 13  
- *Visit some beautiful gardens and support St Elizabeth Hospice*

WOODBIDGE ROTARY CLUB 19  
- *Seeking unwanted usable tools for 'Tools with a Mission'*

## ARCHERS CARPENTRY

*Bespoke Carpentry Services*  
Harry Archer - Qualified & Insured



**Carpentry Services Across Suffolk**

- Bespoke Media Walls
- Understairs Storage Cupboards
- Kitchens Fitting
- Flooring
- Internal Doors
- Decorative Mouldings
- Beach Hut Repairs
- Hardie Plank Cladding
- Fully Insured
- Reliable & Professional
- Clean & Tidy Work
- Free No-Obligation Quotes

**Looking for a Reliable Local Carpenter?**

Harry Archer - Qualified Carpenter  
 ☎ 07548 647030  
 ✉ [Archerscarpentry@yahoo.com](mailto:Archerscarpentry@yahoo.com)  
 📷 @archerscarpentry

Call or Message Today for a Free Quote

Tuffon Hall Farmhouse, Sible Hedingham

Platinum Trusted Service Award 2020

# suffolk hideaways

coastal and country  
holiday retreats



Thinking of letting your holiday home?

We know choosing an agency to let your property can be a big decision, let us make it easy for you.

A friendly and local team | Excellent occupancy levels  
 A Marketing or Managed service | Multi-channel marketing  
 Peace-of-mind damage cover | Professional photography  
 No restrictions on use of your property

To find out more please phone, visit our website or pop into our office in **Aldeburgh** for a chat.

01728 666 300 | [suffolkhideaways.co.uk](http://suffolkhideaways.co.uk) | [f](#) [d](#) [@](#)

# Bee Cafes...What's The Buzz?



It may not have escaped your notice that Bee Cafe Planters have been popping up around town in the last couple of years, and you may have wondered what they are all about?

What started as a lockdown project for retired engineer Paul Martin has developed into a Community Interest Company, promoting ecological welfare.

The initial concept was to link the nationally recognised Buglife B-lines of North Ipswich and Rendlesham with a pollinator pathway that crosses the urban area of Woodbridge, allowing the free flow of pollinating species.

Each planter is constructed of robust materials for longevity and is planted with pollen rich plants, all of which are grown to a very high ecological standard by local company Katie's Garden. Importantly each planter has its own water source, and monitoring system which keeps maintenance

minimal and ensures plants are kept in tip top condition.

Depending on the location, some planters have had frog ramps installed to allow wildlife access to the holding tanks, and others incorporate hedgehog housing. There is some excitement about the possibility of our first spawn this year!

We also have remote monitoring tech, but what really makes the project special is the volunteer teams that look after the cafes. Each cafe has been adopted by a community volunteer or volunteers and they assume responsibility for dead heading, checking, reporting problems and most importantly talking to people about the project.

The majority of planters are fully accessible, allowing almost anyone to get up close and

personal with the plants and insects or, to become an adopter and look after their own bee cafe with support from Bee Cafe HQ. If you are interested don't hesitate to get in touch via Facebook BeeCafe or Instagram BeeCafeUK.

We are pleased to receive support from Woodbridge Town Council, Melton Parish Council, Martlesham Parish Council and Rushmere Parish Council.



## Dynamic DENTAL STUDIO HALESWORTH

Your Smile. Our Reward.



### Our Services

- ✓ General Dentistry
- ✓ T-scan Bite Analysis
- ✓ Clear Aligners
- ✓ Dental Implants
- ✓ Tooth Whitening
- ✓ Cryotherapy
- ✓ Smile Makeovers
- ✓ Hygienist Appointments
- ✓ 2D and 3D Imaging
- ✓ Patient Care Co-ordinator
- ✓ Facial Aesthetics
- ✓ Body Sculpting

### Contact Us :

☎ 01986 873001  
 ✉ PCO@dynamic-dental.co.uk  
 📍 Dynamic Dental Studio,  
 The old creamery,  
 Halesworth, IP198SW  
 🌐 www.dynamic-dental.co.uk

### Opening hours

Monday	8.30am - *7pm
Tuesday	8.30am - 5pm
Wednesday	8.30am - 5pm
Thursday	8.30am - *7pm
Friday	8.30am - 2pm
Saturday	Closed

\*Hygienist appointments available after 5pm with Rita Hendley



DENBURY  
HOMES

## Two exciting new developments Both under 10 minutes from Woodbridge!

### SHOW HOME OPEN

**Oak Grove,  
Eyke IP12 2QW**

Homes are now available in the peaceful village of Eyke. This impressive collection of 2, 3, 4 & 5-bedroom houses and 2 and 3-bedroom bungalows is perfectly placed to enjoy tranquil countryside living with easy access to everything you need.

### COMING SOON

**Hemingway Rise,  
Brightwell Lakes IP10 0BZ**

Located in Martlesham and forming part of the wider Brightwell Lakes community, Hemingway Rise will offer a beautiful collection of energy-efficient 2, 3 and 4-bedroom homes that perfectly balance countryside living with modern convenience.

Denbury Homes, formerly Hopkins & Moore, has been part of the East Anglian landscape for decades, designing homes to reflect local style, enhance existing communities and suit modern lifestyles.

[WWW.DENBURYHOMES.CO.UK](http://WWW.DENBURYHOMES.CO.UK)

Discover Denbury Homes  
 01284 653090  
[sales@denburyhomes.co.uk](mailto:sales@denburyhomes.co.uk)  
[denburyhomes.co.uk](http://denburyhomes.co.uk)



CGI and imagery is indicative only.

# FROM WOODBRIDGE TOWN COUNCIL - MAYOR'S MONTHLY



Here at Woodbridge Town Council, we hope that residents and visitors have spotted two significant changes.

First, we have our new gardeners – change is happening around our town's estate. You will see that the priority has been Elmhurst Park to bring it back to the standard we all expect with lots of new planting. But there is also some immediate work in Kingston Playing Field, Fen Meadow and elsewhere.

On Thursday 19th March, we welcomed Suffolk New College students from Suffolk Rural who volunteered their time to gain experience with some important jobs on Kingston Playing Field.

Second, the scaffolding is up on the Shire Hall. Essential repair works started at the end of March and are expected to last for ten weeks. The main focus of this initial phase will be the repair of the windows of the Grade 1 listed, 450-year-old building. Some of the parking bays on Market Hill have had to be suspended during this time to ensure the safety of those working on the scaffold and for safe passage of vehicles on the Market Hill.



The Government announced on 25th March that Suffolk County Council and the five district and borough councils including East Suffolk Council will be abolished and replaced by three unitary councils for Suffolk in April 2028.

Woodbridge Town Council continues to work actively on managing some of the anticipated impacts of the forthcoming changes.

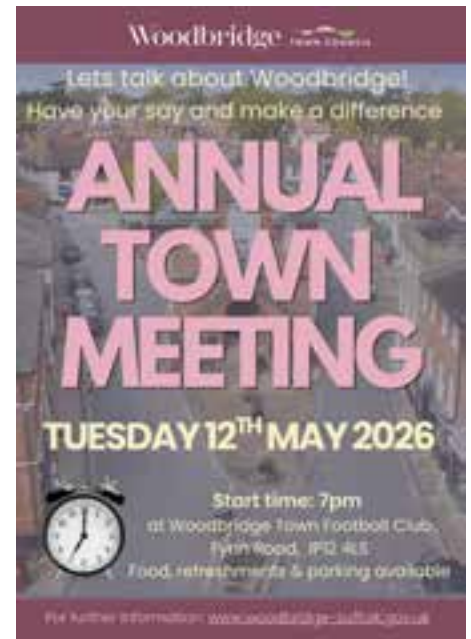
Our working group continues to undertake due diligence on the green spaces that the Town has been invited to consider taking on including Houchells Meadow, Castle Street and the Boating Pond. We are pleased to be supported by a small group of residents with expertise in assessing the risks involved in acquiring green spaces – it has been dubbed the '*Informal Informed Citizen Panel*'. They will not be taking any decisions, but they will be loaning us their expertise as we undertake the various assessments.



We will shortly be advertising two roles to strengthen our clerking team so that we have the necessary capacity to manage this transition and we are making our voice heard that the new unitaries cannot just give us extra costs without also providing us with some of the necessary income. In more technical language, we do not mind a reorganisation - but it has to be accompanied by some real devolution to Town and Parish Councils.

### And finally, two dates for your diary:

**Tuesday 12th May** in the evening at the Woodbridge Football Club there will be the Annual Town Meeting. Please come and quiz your Mayor and Councillors. The bar will be open and light snacks provided.



**Saturday 23rd May** – a special day on Market Hill. It will be Asparagus Day in Woodbridge.

More on these in due course.

**Nigel Phipps**  
Mayor of Woodbridge

Email:  
[CouncillorPhipps@woodbridge-suffolk.gov.uk](mailto:CouncillorPhipps@woodbridge-suffolk.gov.uk)

# LANDGUARD TRUST



## Preserving What Matters for Future Generations

At the southern edge of Felixstowe, where river meets sea, three remarkable places stand side by side: Landguard Fort, Felixstowe Museum and Landguard Nature Reserve. They are more than visitor attractions. They are charitable, community-supported sites that protect centuries of national history, safeguard local memories and conserve one of Suffolk's most scientifically significant coastal landscapes. As a new season begins, these places invite you not only to visit, but to help ensure they continue to thrive for generations to come.

### Landguard Fort

Protecting a National Treasure For nearly 500 years, Landguard Fort has guarded the entrance to Harwich Harbour. From its Tudor origins to its role in both World Wars and the Cold War, it has witnessed defining moments in English history - including the last opposed invasion of England in 1667.

But historic buildings do not preserve themselves. Stonework must withstand harsh coastal weather. Exhibitions require careful interpretation. Tunnels and casemates need ongoing safety checks. None of this is funded by central government; it relies on admissions, donations, grants and the dedication of volunteers.

### Every ticket, event booking or donation directly supports:

- Conservation of historic fabric
- Educational workshops for families and schools
- Volunteer training and research
- Essential maintenance and safety works

Supporting it ensures future generations can walk the same parade ground and stand in the same gun positions.

**Felixstowe Museum: Safeguarding the Town's Story:** A short stroll from the Fort, Felixstowe Museum occupies the former Submarine Mining Establishment - itself an important historic structure. Inside, the story becomes personal.

**Discover  
Explore  
Support Landguard**

**Landguard Nature Reserve**  
*1.5 Miles of natural beach fronted beauty*

**Felixstowe Museum**  
*14 rooms of local history*

**Landguard Fort**  
*400 years of coastal defence*

**3 Sites  
1 Great Day Out  
For the whole family**

DESTINATION **LAND GUARD** FELIXSTOWE

Where guarding the land means so much more

Scan to learn more



The Museum preserves the memories of Felixstowe: seaside holidays, wartime resilience, the growth of the port and community life through the decades. Many visitors recognise echoes of their own lives in the displays.

Almost entirely volunteer-run, the Museum depends on local support. Volunteers catalogue artefacts, research archives, design exhibitions and welcome visitors. Behind every carefully labelled display is a team committed to preserving the town's shared heritage.

**Income from admissions and donations helps fund:**

- Conservation of fragile artefacts
- Archival storage materials
- Building upkeep
- New exhibitions and interpretation

Without sustained community backing, small independent museums face increasing challenges. By visiting and supporting Felixstowe Museum, you help ensure local history is not lost or forgotten.

**Landguard Nature Reserve: Protecting a Rare Landscape:**

Beyond the historic buildings lies one of Suffolk's most important coastal habitats. Landguard Nature Reserve is nationally recognised for its vegetated shingle, rare plants and migrating birds. Its scientific importance extends far beyond Felixstowe, providing vital breeding and feeding grounds for protected species and forming part of a wider network of coastal conservation sites.

Volunteers and wardens monitor wildlife, maintain pathways, install seasonal protective cordons for nesting birds and help visitors enjoy the area responsibly.

**Visitor support helps fund:**

- Habitat management
- Wildlife monitoring equipment
- Educational interpretation
- Conservation materials and tools

For many, the Reserve offers something invaluable: space for reflection, walking and quiet connection with nature. Protecting it ensures this landscape remains unspoilt and ecologically rich.

**Why Supporting Charity-Funded Heritage Matters:** Across the UK, heritage sites and nature reserves face rising costs, ageing infrastructure and reduced public funding. Landguard's sites are no exception. What makes Landguard distinctive is its community model. These places are sustained by people who care - volunteers, trustees and visitors who understand that preserving history and nature requires collective effort.

When you buy a ticket, attend an event, make a donation, become a member or recommend a visit, you are investing in the preservation of nationally important history, locally significant heritage and scientifically valuable habitat.

Discover the past. Explore the landscape. Support what matters.

**Discover, Explore, Support Landguard.**

HERITAGE ROCKS GROUP  
CO.

# Woodbridge Events, Done Beautifully

TWO EXCEPTIONAL VENUES. ONE UNFORGETTABLE EXPERIENCE.

**SECKFORD**  
**HALL**  
HOTEL & SPA

&

**WOODHALL**  
**MANOR**

Some occasions deserve more than the ordinary. With two exceptional venues in the heart of Suffolk - **Seckford Hall Hotel & Spa** and **Woodhall Manor** - Heritage Rocks Group offers the perfect setting for birthday parties, unforgettable anniversaries, stylish private celebrations, inspiring business events and home-stay retreats.

*Discover elegant spaces designed for grand celebrations, memorable gatherings and occasions that deserve to be truly unforgettable.*

SCAN HERE



**EXPLORE THE MOMENTS THAT MATTER..**

EVENTS@HERITAGEROCKS.COM  
01394 385678      WWW.HERITAGEROCKS.COM





**Haughgate House Care Home**  
Haugh Lane, Woodbridge, IP12 1JG



Haughgate House offers residential care for both permanent and respite stays in a friendly, welcoming and peaceful setting with beautiful landscaped gardens.

Our friendly team truly care for your family like they would their own - providing compassion, respect, and dignity.

With a deep commitment to meeting residents' individual needs, whether it's nursing, residential or respite care, Haughgate House is your perfect choice.

Call us on **01394 332270** or visit [healthcarehomes.co.uk](http://healthcarehomes.co.uk)



*Committed, compassionate, caring*



**Endoscopic Micro-Suction and Water Irrigation**

A unique country practice in a beautiful location offering both mobile and clinic appointments. Lisa, Naomi and Tanya are all highly trained by ENT Consultants and offer an expert, tranquil and friendly appointment.

Endoscopic Micro-Suction | Removal of Foreign Bodies  
Water Irrigation | Free ear health checks



- Adults and Children
- Fully Insured
- Parking on-site
- Reception Team
- Amazing 5 star reviews
- Online Booking
- Satellite clinic in Aldeburgh Pharmacy
- Over 30 years experience

01379 772 620 0773 888 5858 [lisa@suffolkearcare.co.uk](mailto:lisa@suffolkearcare.co.uk)  
Laxfield Cabin, Framlingham Road, Laxfield, Suffolk, IP13 8HD



**CAMWOLD COACHING**

Life, education, career and business  
Telephone-based coaching  
Confidential, affordable & flexible

First session free with this ad

For further information, contact  
[camwold-coaching@outlook.com](mailto:camwold-coaching@outlook.com)

or visit  
<https://www.linkedin.com/in/camwold-coaching/>

Please note:  
I am not a psychiatrist, therapist or counsellor.

# WOODBIDGE FESTIVAL OF ART AND MUSIC

## Soul Star Lee John headlines events celebrating 200 years of Civil Rights

Lee John, the platinum-selling lead singer of pioneering British black music act Imagination, is headlining the launch of a new Woodbridge Festival event in Suffolk. Starting **Friday 22 May**, the three-week series will celebrate Thomas and John Clarkson, renowned anti-slavery and peace campaigners that lived in Woodbridge and nearby Playford in Suffolk.

The star-studded line-up at St Mary's Church, Woodbridge, will see Lee John appear with his new Jazz band, featuring Simple Minds drummer Mel Gaynor, Imagination and Sister Sledge pianist Dr. John Watson, Soweto Kinch and Jazz Warriors bassist Miles Danso and virtuoso Saxophonist Dave Mansell.

The night launches a campaign to celebrate the legacy of the Clarksons, who founded two of the world's first civil rights movements, campaigning for the abolition of slavery and world peace. Events at St Mary's Church, Woodbridge, where John Clarkson is buried, will book-end the three-week festival.

There will be a further music, art and family events, as well as a Woodbridge Festival club night on **Saturday 23 May** at New Street Market.

The opening night on 22 May celebrates the foundation of the Society for the Abolition of the Slave Trade, co-founded by Thomas Clarkson on 22 May 1787.

It will also launch a campaign for a space in Woodbridge where the Clarksons' contribution to civil rights can be permanently celebrated.

The closing event, on **Sunday 14 June**, marks the 210th anniversary of the foundation of the world's first peace movement; co-founded by the Clarksons on 14 June 1816.

Thomas Clarkson was a founder and leading advocate in the movement that led to the abolition of the slave trade. His younger brother, John Clarkson, established Freetown in Sierra Leone, as a home for formerly enslaved African people. On returning to the UK John settled in Woodbridge, while Thomas lived in nearby Playford.

Project creator, Ben Osborne of Woodbridge Festival, says: "Woodbridge Festival is delighted iconic Brit Soul singer Lee John is joining us to launch our celebration of the Clarksons. Lee is the perfect artist for the opening night in the unique atmosphere of St Mary's. This will be a one-off event. The Clarksons were considered heroes at the time. William Wordsworth wrote a poem thanking Thomas for his work for humanity. But history is only just starting to give them due credit."

Nigel Phipps, Mayor of Woodbridge, says: "I'm delighted to support Woodbridge Festival's celebration of the town's connection to the Clarkson brothers, who created two of the first modern civil rights movements."

Woodbridge Festival is grateful to Woodbridge Town Council and East Suffolk District Council for making these projects possible.

Lee John Jazz new single release 'All In Your Eyes' EP is out now: <https://save-it.cc/leejohn/all-in-your-eyes>. Taken from the Lee John Jazz EP out now: <https://save-it.cc/leejohn/lee-john-jazz> [www.leejohn.com](http://www.leejohn.com)

**Friday 22 May Civil Nights Festival Opening Night - Lee John Jazz Quartet and Support at St Mary's Church Woodbridge, Market Hill, Suffolk IP12 4LP. Tickets from £10 - £17**

**Events in venues around town Friday 22 May to Sunday 14 June 2026.**

Ticket links and further info [www.woodbridgefestival.com](http://www.woodbridgefestival.com)



## SUPPORTING THE ARTS IN WOODBRIDGE

The Arts Society Woodbridge is part of a long-standing national initiative which aims to bring the arts, in all their diversity, to local communities. Our activities for the Woodbridge area primarily comprise ten lectures a year given for members at the Riverside cinema; we also organise Special Interest Days and visits.

A key part of our work, however, is the funding of local groups for charitable projects which take the arts to those who might not normally have the opportunity to engage with them. Recently, we have been pleased to support 'From Wax to Bronze', based at Butley Studios;

the 'Singing Mamas', a group organised by MORABE rural music for pregnant women and new mothers and drawing workshops at the Longshed of the Saxon Ship, for youngsters. We also support local primary schools in a range of ways such as sponsoring their online submissions for the national Art Bytes scheme. Our budget is small but if you are interested in applying for funding please see our website: <https://theartsocietywoodbridge.org.uk> for examples of our projects and how to contact us for further information.

**Alexandra Carter**

Community Projects Co-ordinator, The Arts Society Woodbridge

# FIRST LIGHT FESTIVAL

**FREE** midsummer multi-arts celebration  
20 - 21 June 2026, South Beach, Lowestoft



Suffolk's free festival returns to Lowestoft's South Beach for a weekend of unique experiences and performances celebrating the summer solstice...

## FREE MUSIC HIGHLIGHTS

DJ Jamz Supernova, Seth Lakeman, Another Taste, Polly Gibbons, Jason Singh, Lizzie Berchie, ShunTa, Cut Capers, N'Famady Kouyaté, Ashton Jones, Levi Fruits & Friends, Caswell, Like Optimists, Magnolia...

## + COMEDY, POETRY, SCIENCE, FAMILY ACTIVITIES

Patrick Grant, Simon Day, John Hegley, Luke Wright, Laurence Edwards, Inua Ellams, Ashley Hickson-Lovence, DanceEast, Natural History Museum, Gainsborough's House, Sunrise Yoga, Cabaret, Silent Disco, Wild Beach Camping, Campervan Glamping + more!

Explore the full line up at [firstlightlowestoft.com](https://firstlightlowestoft.com)



**Summer begins at Lowestoft's First Light Festival!** Taking place on South Beach - the UK's most easterly point and first place to see the sunrise - the free multi-arts festival returns on 20-21 June with an expansive line-up spanning music, comedy, spoken word, visual arts, workshops and more. This year's festival features over 200 free performances - New additions include a cabaret night at East Point Pavilion, a dedicated Vertical Space teen zone, and a glamping option for visitors. While the main beach programme remains free, ticketed events will run on Saturday evening after 9:30pm.

**Celebrate the Summer Solstice:** At the heart of First Light Festival is its iconic Dawn Celebration, held this year on the summer solstice itself (Sunday 21 June). Beginning at 4am, the programme opens with beach yoga followed by a live improvised performance from sound artist Jason Singh. Festivalgoers can then share a communal fish feast while watching the sunrise - marking a symbolic start to summer. A special highlight follows: a new co-commission between Aldeburgh Festival, Britten Pears Arts and First Light, with interdisciplinary artist Tendertwin creating a work inspired by Benjamin Britten in the 50th anniversary year of his death.

**Festival Highlights:** Across the weekend, the Sunlight Stage will host a diverse international music line-up, including BBC 6 Music's Jamz Supernova, Dutch disco collective Another Taste, soul artist Ashton Jones, neo-soul singer Lizzie Berchie, folk musician Seth Lakeman, Balkan-inspired group ShunTA and West African artist N'famady Kouyaté. The First Word Stage brings spoken word and comedy, featuring Luke Wright, Inua Ellams, Elf Lyons, Louise Exactly, Bradley Taylor and John Hegley.

Meanwhile, the Talks and Interstellar Ideas tent includes appearances from Patrick Grant, Chris Lintott, Ashley Hickson-Lovence, George McKay and Julian Barnwell, covering topics from music and literature to history and discovery. Visual arts remain a key part of the festival, with sculptor Laurence Edwards' *The Long Wait* returning to the beach for the summer. Other installations include Maddie Exton's *'Meet me at First Light'*, Hotel Kittiwake, Leviathan, and the Noon to Moon exhibition alongside the Easterly Artists showcase in Kensington Gardens.

**Family Fun:** Families highlights include social dance sessions ranging from Charleston to hip hop, interactive theatre, wellbeing sessions on the sand, and the new Vertical Space zone for young people, offering creative drop-ins, DJ sessions, gaming and sports. Camping options are also expanding, with wild beach camping, cliff-top campervan spots, and - for the first time - pre-bookable fully equipped VW campervans available.

**Sundown Events:** Saturday night's ticketed programme offers a variety of after-dark experiences: an after-party with Jamz Supernova, intimate jazz from Polly Gibbons, classical and acoustic performances at St Peter & St John Church, a debut cabaret show at East Point Pavilion, and the ever-popular Silent Disco. Blending culture, community and coastal beauty, First Light Festival continues to offer a unique way to welcome the summer - starting with the UK's first sunrise.

The festival will run from 12pm noon to sundown (9.30pm) on Saturday, and from 10am - 4pm on Sunday, with a Dawn sunrise programme from 3.30am on Sunday morning.

# INNER WHEEL CLUB OF WOODBRIDGE

At the meeting in March, members were delighted to welcome Angela Leggett- Bond, the District Chairman, who told tales of her varied and busy life and shared her reasons for choosing The Lighthouse Trust as her charity this year. District Chairman Angela and President of Woodbridge Deirdre Griffin, then presented each other with gifts.

At the 24th annual Inner Wheel of Woodbridge Quiz, teams nibbled and sipped whilst racking their brains for the correct answers.



Angela Leggett- Bond & Deirdre Griffin

Competition was tough, results close and the winning team were deserving of the title and the prize. By the end of the evening over £800 had been raised for Brave Futures. The Quiz date for Next year is 12th March 2027.

In April, members were treated to a very interesting and informative talk, given by Barbara McElroy, about the incredible history of Framlingham Castle; royalty, religion, poverty and pestilence.

Woodbridge IW members meet at Ufford Park Hotel at 6.30 pm on the first Thursday of each month. Find out more about the club and its aims and objectives at District 8 <https://innerwheel.co.uk> or email [district8innerwheel@gmail.com](mailto:district8innerwheel@gmail.com) for further information.



Quiz winners

# WOODBIDGE CRUISING CLUB

The club invites all those interested in sailing and the sea to the club house on the banks of the River Deben, Woodbridge on **Sunday 3rd May**, when the club will be open to non-members 12noon - 2.30pm. The club is situated on the River Wall, within walking distance of Woodbridge, what3words: tango. simple. slipping.

The 2026 cruising season has got off to a flying start as boats (motor and sail) are back in the water, with the inaugural 'cruise' of the hotly contested model boat challenge on Woodbridge boating lake.

The first cruise with actual yachts is the Deben Discovery in May, led by Clive and Barbara. This delightful cruise is on the waters of the River Deben with a timed passage from the Woodbridge Haven buoy to Washington buoy and back over 4.8 NM, a club meal, and SADS (safe arrival drinks) at the club house. This will be the first passage over the bar for many sailors this year.

The Ore and Alde cruise is always fully booked, with cruise leader Andy having a delightful programme cruising Orford and Aldeburgh, with SADS and convivial meals at local yacht clubs and pubs.

Members are looking forward to the premiere Muddy Cruise along the Stour and Blackwater, led by Brian and Rosemary, this is a new idea for boats with shallow draughts.

Although the much-enjoyed Wednesday suppers have ceased until autumn, they are replaced by the Wednesday barbecues, a delightful way to spend an evening in the pleasant garden of the riverside club house.

The weekend bar is a lovely place to spend a lunchtime, catching up with friends and enjoying a drink with possibly the best view in Woodbridge, and a special delight in summer, when you can sit on the balcony.

The club is looking forward to the Woodbridge Regatta in July, when the club house will be open to non-members. If you have a genuine interest in sailing and the sea, have a look at our programme of maritime related events on our website at [www.woodbridgecruisingclub.org](http://www.woodbridgecruisingclub.org). New members are always welcome.



**RIVERVIEW GARDENING**  
Garden & Grounds Maintenance

**Providing all aspects of garden and grounds maintenance to both domestic and commercial customers, Ride-on lawnmower available**

**Green waste removed**

**EXPERIENCED - QUALIFIED - INSURED**

Call Oliver - 07779152936 - 01728561990  
Email - riverviewgardening@gmail.com

**HUBBARD**  
Domestic Appliance Repairs

- Ovens
- Dishwashers
- Washing Machines
- Fridges
- Freezers
- Tumble Dryers
- Cooker Hoods
- Microwaves

Supply

✓

Install

✓

Repair

✓

- Bosch
- LG
- Hotpoint
- Samsung
- Beko
- Hisense
- AEG
- AND MANY MORE!

Telephone: 01394 799997 | 07728 403921  
Email: admin@hubbarddar.co.uk | Website: www.hubbardappliance Repairs.co.uk  
Visit Our Showroom: 4 Beach Station Road, Felixstowe, IP11 2DR



**ALLVAC**  
**SERVICE & REPAIR**  
KIRBY & DYSON SPECIALIST

HAVE YOUR VACUUM CLEANER COLLECTED FULLY SERVICED AND RETURNED AT YOUR CONVENIENCE FOR

**£35**

ALL MAKES AND MODELS

**PAUL LAYTON**  
01379 871095 OR 07866 549642

**Tom's Garden Services**  
Woodbridge




Maintenance | Lawn Care  
Hedging | Pruning | Fencing  
Restoration | Advice

Call Tom on 07463 018846  
tomsgardenwork@yahoo.com

Experienced, Reliable, Ecofriendly and Insured



**1ST CUT**  
TREE AND FORESTRY SERVICES

**EXPERTS IN ARBORICULTURE**

Crown Reductions - to reduce risk of branch failure and improve light  
Safe Tree Removals - using modern rigging techniques / mobile cranes & mowps  
Site Clearances - for development projects / re-landscaping

Fruit Tree Pruning • Hedge Cutting  
Stump Grinding Services • Ready to Burn Firewood  
NPTC Qualified Staff • Public/employers Liability Insurance  
Free Advice & a Free Quotation

01986 798977 george@1stcuttreeservices.co.uk  
www.1stcuttreeservices.co.uk

**PROFESSIONAL • RELIABLE • FULLY INSURED**

**I.C.KING LTD**  
*Painters and Decorators*  
[www.ickingltd.co.uk](http://www.ickingltd.co.uk)

5 The Green, Chediston,  
Halesworth, Suffolk, IP19 0BB  
Tel: 01986 785281 Mob: 07944 647553  
Email: ickingltd@gmail.com

**JOHN BRIDGES**  
**GARDEN LANDSCAPER**

PATIOS | RAISED BEDS | FENCING  
PERGOLAS | TURF LAYING

30 yrs experience

01728 832972 | 07787163249  
bridgesjac@gmail.com



**Martlesham Fencing & Gardening Services**

New fencing & repairs  
All types of fencing supplied & fitted  
Gardening projects & maintenance

Call Kevin on 07943853860  
martleshamfencing@gmail.com  
[www.martleshamfencing.co.uk](http://www.martleshamfencing.co.uk)

# THE GREAT GARDEN TRAIL 2026

## 16th & 17th May: Nacton Open Gardens - in aid of St Elizabeth Hospice

From small courtyard spaces to gardens covering several acres, including one with a miniature railway, between six and eight beautiful and varied gardens will be open to visitors. The event starts at Nacton Village Hall, where parking is available adjacent to the hall. St Martin's Church will host a 'Desert Island Discs' exhibition and refreshments will be available at both the village hall and the church and plants will be available to buy.



Seating areas are positioned throughout the grounds.

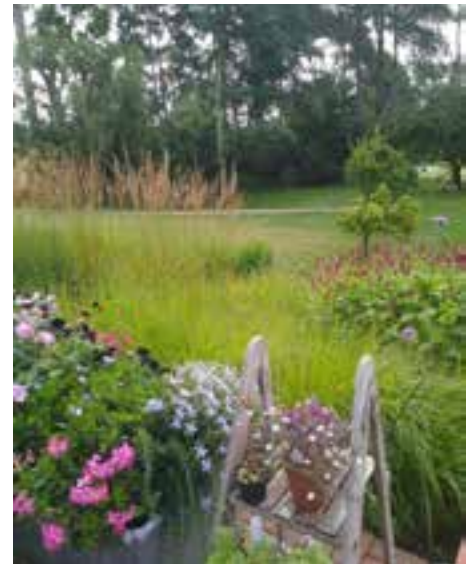
There will be plants and refreshments available to buy. Dogs on a lead are allowed, there is wheelchair access, (although not to all areas). Limited parking.



There is disabled access at some of the gardens and wheelchair access (although not all areas). Dogs on a lead are allowed.

## 6th June: Ufford Open Gardens

A variety of village gardens, large and small, tailored and designed to attract wildlife. Most gardens have disabled access. Buy tickets and programmes on the day at St Mary's Church Hall. Admission includes tea and cake. Some gardens permit dogs on leads. Plants and refreshments will be available to buy. Limited parking.



## 6th June: The Brambles

Brambles is a large south-facing plantsman's garden, planted to encourage birds and wildlife. It has been developed over the last decade and contains many unusual plants, a pond and herbaceous borders with over 40 different roses. There is also a fruit area and two greenhouses. Plants and refreshments will be available to buy. There is disabled access at some of the gardens and wheelchair access (although not all areas). Dogs on a lead are allowed. Limited parking.

## 7th June: Grove Court, Woodbridge

Set in nine acres of landscaped gardens, with views across the River Deben. Featuring an ornamental grass bank, orchard area, rose beds and seasonal perennial planting, all accessible by pathways.

There are also some impressive trees, a haven for birds and wildlife. There is a summer house where refreshments will be available and a courtyard with extensive flower and bulb planting.

## 14th June: Woodbridge Open Gardens

A chance to wander the historic market town of Woodbridge and view a variety of large and small hidden gardens. Tickets and maps can be bought on the day at Woodbridge Community Hall. Admission includes tea and cake. There will be plants available to buy. Dogs on a lead are allowed, there is wheelchair access, (although not to all areas). Limited parking.

# WOODBIDGE FLOWER CLUB

Our latest meeting started earlier than usual with a coffee morning, where new members had a chance to meet and chat to others. This was followed by a workshop led by Amanda where members who were new to flower arranging were able to make a table posy.

After a short lunch break we were able to enjoy an entertaining demonstration by Jacque Aldouse. Jacque spoke about her autograph collection and designed her arrangements based on her favourite celebrities while also showing us their pictures and autographs. One of her arrangements was a tribute to Luke Chambers and Gareth McAuley and for this Jacque used blue and white flowers to represent Ipswich colours.

Our spring competition asked members to decorate an Easter hat and we were delighted that so many took part.

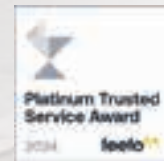
The meeting ended with tea, cakes and a raffle.





**attwells**  
Solicitors

## Legal Services for Woodbridge and the Surrounding Areas



**At Attwells Solicitors, we provide expert support in conveyancing, Wills, Lasting Powers of Attorney and Probate, helping you make confident decisions at every stage of life.**

We offer clear, practical advice with a friendly, personal approach. Whether you are moving home, planning ahead, administering an estate or updating your Will, our experienced team is here to guide you every step of the way.

With the opening of our Woodbridge office, we are proud to serve clients across Woodbridge and the surrounding areas with trusted, accessible legal support.



**Call now on 01394 334500**



**attwells.com**

### Why Choose Attwells Solicitors?



#### Plain-English Advice

We avoid complicated terminology when communicating with you and adapt our service to suit your needs.



#### Same Day Call Back

Don't you hate it when your Solicitor never calls you back? We commit to returning your call on the same day if you call before 3pm. We will also provide you with regular updates on the progress of your matter.



#### Trusted Advisor

We promise to support you in achieving the best possible outcome and therefore if we can't help we will always recommend someone who can.

# WOODBIDGE RIVERSIDE TRUST

The Easter holidays certainly brought lots of visitors to Whisstock's place! The Longshed hosted several of the 'clues' to the Easter Egg Hunt organized for Easter Sunday by the Tide Mill Museum, and the event was great family fun – many thanks to everyone who supported it.

On **Saturday 9th May**, at 3pm in the John Gibbins Gallery, we have an intriguing talk by Paul Constantine entitled 'The Making of England'. Betrothal, Betrayal, Backstabbing and Blood! The story of England's darkest age Part One. When the Romans departed, they left behind a chaotic collection of tribal territories held by chiefs and warlords – so what happened? Tickets are £8 to include tea and cake and are available from The Longshed Gift Shop or via Eventbrite (no booking charge). Next month (June) and into July, WRT, together with member of the Woodbridge Model Boat, are going to run a **Model Boat programme** again for year 6 students. It will be for two schools - Woodbridge Primary school (WPS) and St Mary's CofE Primary School. The children will come to The Longshed once a week for a couple of hours, and finish with a Regatta at the Model Boat Pond to try out their boats. In groups of 3 children, each model boat will be built to a pattern out of lightweight wood (which can be cut with scissors) and has a small propeller. The programme includes input about the basics of boats in water, how to get them to move in the desired direction etc. and the children get hands-on experience of using tools in building their model boats.

A member of the Model Boat Club will be leading the sessions, supported by a number of our volunteers.

Our **Gift Shop**, which raises funds towards the cost of running The Longshed and our Education Programmes, stocks an impressive range of cards, many of which are unique to the Trust, including some beautiful studies of wading birds by local artist Lynne Ward. We also like to stock works by local authors.

**A date for your diary: 19th July, Woodbridge Regatta**



**Black tailed godwit: Artist; Lynne Ward. Photo: Bryan Knibbs**

THE CROWN  
*and Castle*

Linger a little longer with  
*Saturday Lunch*

**New for 2026**

**Served between 12pm and 2pm**  
To reserve your table today  
call 01394 450205 or visit,  
[www.crownandcastle.co.uk/dine/saturday-lunch](http://www.crownandcastle.co.uk/dine/saturday-lunch)

THORPENESS  
COUNTRY CLUB

New  
**Seaside Sweethearts**  
Package

**Book your Seaside Sweethearts wedding before 30th June 2026 and receive an engagement shoot worth £300 on us.\***

For further details visit  
[www.thorpenesscountryclub.co.uk/weddings](http://www.thorpenesscountryclub.co.uk/weddings)

\*Terms and Conditions apply.

Credit: Images By Anna

# MIDDLETON OPEN GARDENS

6th & 7th June 2026

Our ever-popular Open Gardens event offers an eclectic and exciting mix of gardens, some conventional and formal, others more informal or relaxed, including some new to our event. Approximately 18 gardens will be open (the total may vary from day to day).

In the pretty village of Middleton, there are gardens stretching down to the Minsmere River and others overlooking Middleton Moor. Some with views of the marshes and others across the fields; some with the Spire of Holy Trinity church seen piercing the sky in the distance. Many of the gardens have a story to tell, of both their creation and their development over the years.

Several of the gardeners cleverly borrow the beautiful surrounding Suffolk landscape to attract animals, insects, plants and birds. You will also find a herd of alpacas grazing quietly in fields within the village.

Displays by children of Middleton primary school will be exhibited in the church. The pub barn will also host an exhibition of Art, crafts and vintage clothes, and there will be a plant/flower stall. Refreshments will be available all day.

## Middleton Open Gardens

6<sup>th</sup> & 7<sup>th</sup> June

18 Gardens

11am  
to 5pm

Refreshments  
at the pavilion  
available all day



(last entry 4.15pm)

Adults £5.00 - children free

Arts, Crafts,  
Vintage &  
Plants event  
at the Pub barn  
\*\*\*

Family Bug  
Hunting  
Sessions

Have fun, catching and learning  
about the many different  
wildlife species that inhabit our  
gardens



Guides available from:  
Recreation Ground, Fletchers Lane (IP17 3NZ)  
& at Middleton Moor (IP17 3LW)

Major fundraiser for Holy Trinity Church, Middleton  
Also supporting East Anglian Air Ambulance & Project40seven  
Contact Christine Burgess: 07826 840478 or christineburgess29@gmail.com

# WOODBRIDGE MUSEUM

Apologies but the information in last month's edition about Woodbridge Museum opening times was wrong. Over the Summer months we plan to open every day from 10.30am – 4.30pm during school holidays. In term time the museum will be shut all day on Fridays.

Unfortunately, on occasion we do have to close the museum at short notice because stewards are unavailable. We do need more volunteers to help us with various roles within the museum, so if you have any time to spare please contact enquiries@woodbridgemuseum.com for more details.

Friends Of Woodbridge Museum's next talk is on the **8th May** and will be presented by Nigel Smith. His talk is about Cardinal Wolsey and how Suffolk society was changing during his lifetime.

The talks are held at Woodbridge Community Hall at 2.30 - 4pm and non-members are always very welcome and no prebooking is required.

There will then be a summer break until 11th September when monthly talks will resume, the first being about Hatfield House and the Cecil Family.

A full list of talks will be on our new website so do take a look.

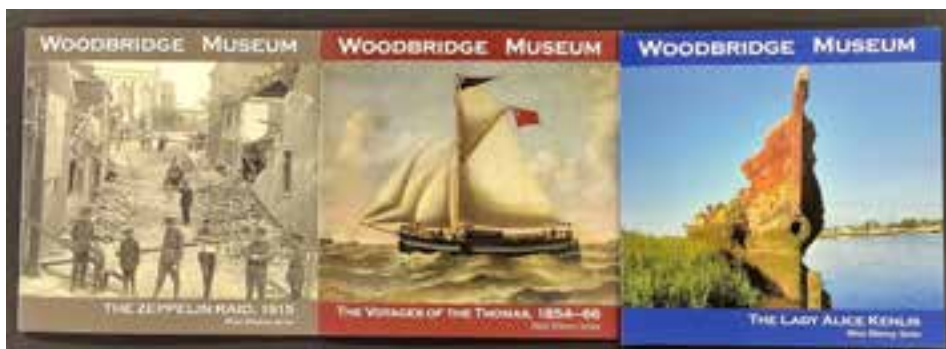
Woodbridge Museum is also delighted to announce that we are producing a new mini Series of illustrated booklets on various subjects relating to the history of our local area.

The first three titles are: *'The Lady Alice Kenlis'*, about the hulk on the Sutton side of the River Deben;

*'The Zeppelin Raid, 1915'*, about the bombs dropped on Little St John's Street and elsewhere in Woodbridge; and *'The Voyages of the Thomas, 1854-66'*, a small cargo boat that sailed from Woodbridge around the British Isles.

Other titles are in the course of preparation, and the next one will be about The Old Cemetery, Woodbridge.

The books are now on sale in the museum shop at a cost of £2.50 each. We hope you will find them interesting and all profits will go towards the costs of running Woodbridge Museum.



# CHARITY CERAMICS SALE

**THE GREAT  
BLUEBIRD POTTERY  
CHARITY SALE**

**Large range of beautiful  
handmade ceramics donated  
by local artists**

Thursday 21 May 2026  
to  
Wednesday 27 May 2026  
10am to 5pm

ARTSPACE WOODBRIDGE  
Apothecary House - 64 Thoroughfare  
Woodbridge IP12 1AL



**in aid of St Elizabeth Hospice**  
Registered Charity No. 289154



Bluebird Pottery in Sudbourne Park, a local ceramics studio with over 50 members, will be holding a **Charity Sale** at the **ARTSPACE** Woodbridge from **21st to 27th May**.

A wide and wonderful array of ceramics will be on sale with **ALL PROFITS** donated to **St.Elizabeth's Hospice**. The artworks promise to be highly creative, unique, one-off pieces, lovingly handmade by skilled ceramic artists.



Prices will be well below what they usually charge so an early visit is recommended.

**21st to 27th May 10am to 5pm, ARTSPACE, The Thoroughfare, Woodbridge.**

And when you visit, join their mailing list and you will also be part of a prize draw to win a free pottery class for up to 4 people.

## ALDEBURGH MUSIC CLUB

Aldeburgh Music Club present **FOLK SONGS FROM AROUND THE WORLD**

**Saturday 30th May 2026 at Orford Church**

Following their successful all-Mozart concert at Snape in March, **ALDEBURGH MUSIC CLUB CHOIR** turn to something completely different for their next concert.

At Orford Church on 30th May, the choir will be presenting an evening of **FOLK SONGS FROM AROUND THE WORLD**, in choral arrangements by a range of composers including Vaughan Williams, Bob Chilcott and John Rutter.

Also in the programme, Aldeburgh Music Club's Vice President, the mezzo soprano Diana Moore, will be singing a number of Benjamin Britten's folk song arrangements, accompanied at the piano by Jonathan Rutherford.

The concert begins at 7.30pm, and tickets are available from the Music Club's website, [www.aldeburghmusic.club](http://www.aldeburghmusic.club)



Aldeburgh Music Club  
Saturday 30 May 2026 7.30pm  
St Bartholomew's Church, Orford

## FOLK SONGS FROM AROUND THE WORLD

Arranged by Britten, Chilcott  
Vaughan Williams and others

**ALDEBURGH MUSIC CLUB CHOIR**  
Music Director **TOM APPLETON**  
with **Diana Moore** *mezzo soprano*  
and **Jonathan Rutherford** *piano*

Tickets £15, Under 18s half price  
Tickets available from [www.aldeburghmusic.club](http://www.aldeburghmusic.club)



# Garden Rooms, Timber Buildings & Outdoor Living



Garden Rooms • Cartlodes • Gazebos & Pergolas  
Decking Kits • Pet Housing  
Built in Suffolk. Made to last.  
Bespoke / Standard Design & Builds



01449 711598 | [mickfieldtimberproducts.co.uk](http://mickfieldtimberproducts.co.uk)

SALE SALE SALE SALE SALE SALE

## 25% off HOUSE BLINDS



Call 01953 544 041

**[norwichsunblinds](http://www.norwichsunblinds.co.uk)**

T&Cs apply, please visit: [www.norwichsunblinds.co.uk](http://www.norwichsunblinds.co.uk)

## Protect and transform your home with Anglian Rooftrim

Stylish fascias, soffits and guttering that last year after year. Made in Britain, low maintenance, and built for all weather.



Call today for your free quote

**0800 876 6408**

REF: LP1125



# WOODBIDGE ROTARY CLUB

Woodbridge Rotary Club meet most Fridays from 12:30, in the bar of The Bull Inn, Market Hill, with lunch in Carlow's room at 13:00 and following lunch we frequently have a guest speaker. Why not come along and meet us? More information can be found at [woodbridgerotary.com](http://woodbridgerotary.com).

We organised a Pop Quiz on 20th March at Woodbridge Town Football Club. It was a fantastic success indeed, raising much needed funds for the support of the Teenage Cancer Trust, in fact the net proceeds were over £1,000. The quiz was presented by Lee Thompson who writes the questions for Vernon Kay's 'Ten-To-The-Top' aired daily on BBC Radio 2. The Quiz was sold out during the week before. The response of attendees was very positive, which is encouraging as it our intention to make this an annual event. The winning team was 'The Material Girls' with a prize of £100 and a Trophy to hold until 2027's quiz, with 'the 46s' team carrying off the 'wooden spoon' being a copy of Lee's book 'The Official Charts Quiz' which we understand they will use to revise for next year's quiz.

We are organising a collection of tools for TWAM (Tools With A Mission) which is a Christian charity that collects unwanted usable tools and refurbishes and sorts them into trade tool kits for livelihood creation. To learn more, visit the website: [www.twam.uk](http://www.twam.uk). Collection points are in the process of being finalised as you will see from our website and Facebook pages.

The dates for these collections are during the weeks commencing **11th & 18th of May**.

Finally, don't forget to save the date for Woodbridge Regatta which this year will be on **19th July** on our wonderful Deben riverside - no doubt, for some enthusiastic sailors that may well mean in the Deben too!



Lee Thompson presenting the Trophy and prize to 'The Material Girls'

## THE ART STATION

### Healing Generational Trauma Through Interactive Straw Art



Did you get in trouble at home for drawing on the walls? If so, you must visit The Art Station, where you will not only be encouraged to draw or write on walls, but you will also be rewarded with a corn dolly created by Kristina Tonev, a Suffolk-based artist who is currently inviting audiences to 'The Mother Lode' exhibition part two, where they can immerse themselves in the straw installation.

*"It was very powerful, had an ancient folk vibe, some kind of ceremonial but also intimate, domestic process ritual activity was taking place, artist hands created a fascinating focal point, it was absorbing, immersive, mysterious, and also had a grand scale. The material was evocative and the smell pricked something in the deep psyche, the oddness of straw in winter lent a surreal quality and the universal activity that people across the globe would know"* - Laurence Edwards, British Sculptor.

This exhibition encourages children and young people to stay playful, while also allowing older generations to reconnect with their inner child and have fun in a safe, caring setting. The Mother Lode is a series of solo exhibitions by artists who are also mothers, exploring motherhood as a profound creative force rather than a detour from artistic practice.

What's On at  
**Leiston**  
 Film Theatre

Fri 1st May at 7.15pm  
 Sat 2nd May at 4.00pm & 7.15pm  
 Sun 3rd May at 12.00pm  
 Mon 4th & Tues 5th May at 7.15pm  
 Wed 6th May at 3.00pm & 7.15pm  
 Thurs 7th & Fri 8th May at 7.15pm  
 Sat 9th May at 4.00pm & 7.15pm  
 Sun 10th May at 6.00pm  
 Mon 11th & Tues 12th May at 7.15pm  
 Wed 13th May at 3.00pm & 7.15pm  
 Thurs 14th May at 7.15pm  
 Sat 23rd May at 7.30pm  
 Mon 25th May at 6.00pm

**MICHAEL** 12A

Sat 2nd & Sat 9th May at 1.00pm

**THE MAGIC FARAWAY TREE** U

Sun 10th May at 3.00pm

**EPiC: ELVIS PRESLEY  
 IN CONCERT** 12A

Fri 15th & Sat 16th May at 7.15pm  
 Sun 17th May at 6.00pm  
 Mon 18th May at 1.00pm & 7.15pm  
 Tues 19th May at 7.15pm  
 Wed 20th May at 2.00pm  
 Thurs 21st May at 7.15pm

**THE DEVIL WEARS PRADA 2** 12A

Sun 17th May at 3.00pm  
 Wed 27th May at 1.00pm

**GLENROTHAN** 12A

Fri 22nd May at 4.30pm & 7.15pm  
 Sat 23rd May at 2.00pm & 5.00pm  
 Sun 24th May at 3.00pm & 6.00pm  
 Mon 25th, Tues 26th, Wed 27th,  
 Thurs 28th & Fri 29th May at 3.00pm  
 Sat 30th May at 2.00pm & 5.00pm  
 Sun 31st May at 3.00pm & 6.00pm

**THE SHEEP DETECTIVES** PG

Tues 26th, Wed 27th &  
 Thurs 28th May at 7.15pm

**YOU, ME & TUSCANY** 12A

High Street, Leiston, Suffolk. IP16 4BZ  
 Tel: 01728 830549, or visit:  
[www.leistonfilmtheatre.co.uk](http://www.leistonfilmtheatre.co.uk)

19-21 JUNE 2026

**BEERS & BEATS**

WEEKENDER - at The Randolph

Four local, independently brewed

SELECTION OF 10 INDEPENDENT BREWS

19<sup>th</sup> - Live music from 6pm

20<sup>th</sup> - BBQ/Hog Roast served 12-3:30pm  
 Live music from 12:30pm with The Bakery,  
 followed by Class of Britpop from 4:30pm

21<sup>st</sup> - BBQ/Hog Roast served 12-3:30pm  
 Live music from 12:30pm with The Austin  
 Beats!

01502 723403  
 THE RANDOLPH, 41 WANGFORD ROAD,  
 REYDON, SOUTHWOLD IP15 6PE  
[WWW.THERANDOLPH.CO.UK](http://WWW.THERANDOLPH.CO.UK)

**FREE ENTRY**



**FARTHING**  
 FUNERAL SERVICE

• Est. 180 Years •

CREATE HOUSE, 2 STATION ROAD,  
 WOODBRIDGE IP12 4AU  
 TEL: 01394 331337

[farthingfunerals.co.uk](http://farthingfunerals.co.uk)

Funeral Partners

# WOODBIDGE BOWLS

Spring arrives then slips into summer and the bowls season beckons again for 2026. Here at Woodbridge our volunteer green keepers have been working throughout the winter period to keep our green in pristine condition, and with all that rain it's looking very green as well.

Our league matches started in late April and we are very pleased that new members recruited in 2025 have already put themselves down to play in leagues for this year. We find this very encouraging and we are actively looking every year for people who have not tried this relaxing, but sometimes very competitive game.

To this end, we are having our open day on **Sunday 24th May 2026** at our Club in Lime Kiln Quay Road (inside Elmhurst Park), Woodbridge IP12 1BB from 10am to 12noon. This is open to all ages, so come and physically get on the green and it try for yourself, there is no dress code and we supply all the equipment but we do ask all who wish to try bowling to bring flat shoes, trainers are ideal. Complimentary teas and coffees and a biscuit will be available on the day. In the afternoon of 24th May we are running our normal club games from 2.30pm and people are encouraged to see how we actually play, and we will keep a playing rink open for people to try on the green again if they wish to do so.

## DATES FOR YOUR DIARY

**MAY 5 FOWLplayEvents present The Deben Players in 'Flying Lessons'.**  
Some of the cast from the Deben Players will perform sketches and excerpts from their May production, a delightful comedy drama by Sarah Lowen. You will be served a drink at this free event but donations to the The Friends of Woodbridge Library would be welcome. 7.30pm at Woodbridge library.

**MAY 9 Fressingfield Sounds presents Andrey Gugin,** BBC award-winning, virtuoso pianist, performing works by Grieg and Liszt, and ballet transcriptions by Tchaikovsky (Sleeping Beauty) and Stravinsky (Firebird). 7.30pm @ Chapel Hall Arts, Fressingfield, IP21 5QD. Visit: [www.fressingfieldsounds.org.uk](http://www.fressingfieldsounds.org.uk) or call 07900 350117.

**MAY 19 Music at Lunchtime.** We are delighted to welcome back the Shingle Street Folk Band, playing acoustic music and catchy folk songs for your enjoyment. 12.45 - 1.30pm at Woodbridge library. Donations to the work of The Friends of Woodbridge Library (FOWL) will be most welcome.

**A1 Carpets** <sup>4U</sup>  
*By Gary Burden*

**For the complete A1 Home Selection Service**

*Carpets, Vinyl & Luxury Vinyl Tiles*  
*Professional, reliable and competitive*  
*Save ££££'s - We will beat any genuine retailer quote!*

**Tel: 01728 604396 Mob: 07419 375720**  
**[www.a1carpets4u.co.uk](http://www.a1carpets4u.co.uk)**

**RSPB Minsmere Nature Reserve**  
Wildlife - Shop - Café - Events - Family Activities






[rspb.org.uk/days-out/reserves/minsmere](http://rspb.org.uk/days-out/reserves/minsmere)

**Aldeburgh Summer Theatre**  
Aldeburgh Jubilee Hall, entrance opposite Lifeboat Station, or via Crabbe Street IP15 5BP

**20th to 25th July**  
**The Importance of Being Earnest**  
Wilde's ultimate Romcom of Errors. ACT tribute production to Jill Freud & Company

**10th to 15th August**  
**SHOW and TELL**  
Dark-comedy Gold by 'National Treasure' Alan Ayckbourn

**27th July to 8th August**  
**Love from a Stranger**  
Classic Agatha Christie mystery thriller adapted by Louise Page

**18th to 29th August**  
**Tons of Money**  
The Best of British roaring-twenties Farce by Will Evans & Arthur Valentine

Evenings 7:30pm (Mon to Sat). Matinees (Thurs & Sat) 4pm Tickets £18 or £24

**TO BOOK: 01728 343344** (without fees).  
[www.ticketsource.co.uk/](http://www.ticketsource.co.uk/)  
[southwoldandaldeburghtheatre](http://southwoldandaldeburghtheatre) (fees apply)  
[www.actco.uk](http://www.actco.uk) @aldeburghclassictheatre



# WOODBRIDGE TOWN FOOTBALL CLUB

On Saturday 11th April before the game against Lakenheath, the Club made a donation of £554 to Cancer Research. The money was raised at a function held in February to celebrate the lives of two legends of WTFC, namely Greg Warden and Johny Markham, who both succumbed to cancer recently.

In the photo Chris Blundell (Life Vice President) is seen presiding over the cheque presentation to John Turner (second right) of Cancer Research together with members of the Warden family.

By the time this article goes to print the season will be over for Woodbridge Town and the First Team will have to settle for a mid-table position. Most supporters will consider that we have under-achieved this season and our new management team will have learnt that the Thurlow Nunn East Anglia Premier Division is a lot more competitive, physical and skilful than the Ipswich & District Premier League. On the positive side we have seen the emergence of 2 players from the Under 18s who have prospered and matured in the Senior Side and have become key players.

In the Summer the Club will accommodate Sunday Morning Car Boot Sales and numerous posters have been placed in various locations in the town. The dates for the Car Boots are: **3rd May, 7th June, 5th July, 2nd August and 30th August**. Please put these dates in your diary and note that they commence at 10am and food is available and the bar will be open.



## MELTON BOWLS CLUB NEWS

On 27th February 2025 Melton Bowls Club celebrated its 120 years since becoming established on the initiative of Richard Bentham, headmaster of Melton school. The original membership of eight has grown to more than sixty members.

The club members had a good 2025 season with members participating in county finals and semi-finals:

**County Finalists:** Mary Gillam, EBF Ladies 4 Wood Singles; Shirley Lilley, Valerie Holt & Mary Gillam, EBF Ladies 2 Wood Triples

**County Semi-Finalists:** Mary Gillam, EBF Ladies Senior Singles; Shirley Lilley, Valerie Holt & Mary Gillam, EBF Ladies 3 Wood Triples; Shirley Lilley, Derrick Sharp & Andy Morey, EBF Mixed Triples

**Cup Results:** Melton were Semi-Finalists in the Salter Cup, Junior Cup & Sun Bowl

**Local League Winners:** Melton Purples came 1st in the EBF Samford League

BE=Bowls England, EBF=English Bowls Federation

In addition, John Kilby, Melton Bowls Club chair, was a member of the winning Suffolk Adams Team in the EBF County Adams Trophy national final.

The annual Alec Lankester Match (Melton v Woodbridge & District League) was a close match for most of the game but Melton had some good last ends to win 100 to 77 shots overall.

The donations on the night raised £175.

This brings the total raised by Melton Bowls Club for the St Elizabeth Hospice since 1997 to £3,111.00. The trophy was presented by Alec Lankester's daughter Jean Clarke.

The club is open to new members and will be holding two open days in 2026 to give new players a chance to try lawn bowls and experienced players to experience the club's facilities. Equipment and tuition will be provided - just come to the club ground in Dock Lane, Melton IP12 1PE wearing flat soled shoes on **Sunday 17th May** or **Saturday 23rd May** between 10am and 2pm. Refreshments will be available.

Visit: [meltonbowls.onesuffolk.net](http://meltonbowls.onesuffolk.net) or send an email to [meltonbowls@gmail.com](mailto:meltonbowls@gmail.com)

This issue was designed, printed & published by Leiston Press.

Woodbridge Talk is your free local paper, 2000 copies are printed every month. We distribute the magazines door to door and to many varied outlets. The next issue will be published Monday 1st June copy deadline is 14th May - but the earlier the better to ensure inclusion.

Contacts/Advertisers/Editorial:

Louise Gissing at Leiston Press, Unit 1b Masterlord Industrial Estate, Station Road, Leiston, IP16 4JD  
[lou@tidecollection.com](mailto:lou@tidecollection.com) Tel 01728 833003

Reports, press releases; letters and other editorial contributions with news value are all welcome but are accepted on the understanding that there is no guarantee of inclusion and that they will be selected and edited at the editor's discretion.

# PROJECT UPDATE

MAY 2026

The Friday Street Roundabout and Yoxford Roundabout are now open to traffic. This is a significant milestone for the Sizewell C infrastructure improvement works, making two notorious junctions on the A12 a lot safer.

Delivered as part of Sizewell C's commitment to strengthening regional infrastructure, the new roundabouts replace older junctions that had become increasingly congested and challenging to navigate at peak times. The redesigned layouts now provide safer access to the A1094 at Friday Street and the B1122 at Yoxford, reducing queuing and lowering the risk of accidents. Whilst traffic management in the area will reduce, works around the roundabout will continue as the now redundant parts of the A12 are removed and prepared for landscaping, and the construction of the two-village bypass that will eventually connect to the Friday Street Roundabout continues.

The Southern and Northern Park and Ride car parks are open and our workforce are being bussed from the locations onto site. At the Northern Park and Ride, there are now 280 spaces, and 80 spaces at the Southern Park and Ride.

The roundabout that links the Northern Park and Ride with the A12 and Willow Marsh Lane continues to be constructed and linked to the road network; we expect the works to be completed by early summer.

## A12 road improvements

We have recently completed the first of three signalised road crossings along the A12 in Yoxford. The next crossing will be constructed in Marlesford and is due to commence in May. Works will then proceed onto Little Glemham for the third signalised crossing. These works will require traffic management along the A12 and will be outlined on the **Sizewell C Works Tracker**.

In the wider road network, Sizewell C will be making general improvements on local roads, in particular on the B1122, B1125 and B1119. These works will improve safety accessibility and include high friction surfacing, new footways, vegetation management for improved visibility, signage, and village gateways. The first work to commence will be the B1122 footpath improvements starting in mid-April.

This work will involve traffic management during the day and some night time closures to maximise time and lessen disruption on the road network during the working day. We are also conducting these works in collaboration with other Nationally Significant Infrastructure Projects (NSIPs) in the area, in particular Scottish Power Renewables.



Scan the QR code for further details about the collaboration.

## FORUM

## SCHEDULE

### Forum timings

18:00 - 20:00  
(Arrival from 17:45)

Northern Transport Forum      Wednesday 6 May      High Lodge Darsham

Southern Transport Forum      Wednesday 3 June      Stratford St. Andrew Riverside Centre

For more information and for more forum dates visit [sizewellc.com/community/forums](http://sizewellc.com/community/forums)

\*Calls to 0800 numbers are free from UK landlines. Call costs from mobile and international numbers may vary.



**dp** **deben**  
**players**  
Presents...

**SECKFORD**  
**THEATRE**  
WOODBIDGE

# FLYING LESSONS

A new comedy drama written by Sarah Lowen



**13th to 16th May 2026**

Performances 7.30pm nightly

Book tickets on-line  
**debenplayers.net**

Box office Tel 0333 666 3366

