

...YOUR FREE LOCAL NEWS

APRIL 2026

ALDEBURGH TIMES



PART OF THE **TIDE COLLECTION**

ALDEBURGH TIMES

WOODBIDGE TALK

SOUTHWOLD ORGAN

SAXMUNDHAM NEWS

LEISTON OBSERVER

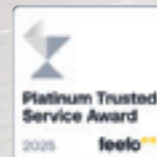
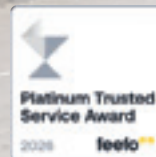
FRAMLINGHAM FOCUS



attwells
Solicitors



Legal Services for Woodbridge and the Surrounding Areas



At Attwells Solicitors, we provide expert support in conveyancing, Wills, Lasting Powers of Attorney and Probate, helping you make confident decisions at every stage of life.

We offer clear, practical advice with a friendly, personal approach. Whether you are moving home, planning ahead, administering an estate or updating your Will, our experienced team is here to guide you every step of the way.

With the opening of our Woodbridge office, we are proud to serve clients across Woodbridge and the surrounding areas with trusted, accessible legal support.



Call now on 01394 334500



attwells.com

Why Choose Attwells Solicitors?



Plain-English Advice

We avoid complicated terminology when communicating with you and adapt our service to suit your needs.



Same Day Call Back

Don't you hate it when your Solicitor never calls you back? We commit to returning your call on the same day if you call before 3pm. We will also provide you with regular updates on the progress of your matter.



Trusted Advisor

We promise to support you in achieving the best possible outcome and therefore if we can't help we will always recommend someone who can.

A NOTE FROM OUR EDITOR



Aldeburgh's Easter invasion is imminent and there is plenty to do and see for locals and visitors alike, with the reopening of The Red House, performances at the Jubilee Hall and a family panto! Also, Aldeburgh RNLI are looking for 16 to 18 year olds for their Youth Activity Scheme – what an excellent opportunity to learn some life skills! Whatever you plans over the Easter break I wish you fine weather and fun!

Please drop me a line to boost your business by advertising with us, in any or all of our six titles, (including our new Framlingham Focus!). Email: lou@tidecollection.com

Quote of the month

Do not spoil what you have by desiring what you have not; remember that what you now have was once among the things you only hoped for

Epicurus

TIDE COLLECTION
 A COLLECTION OF 6 FREE MAGAZINES
 DISTRIBUTION OF 12000 DELIVERED DOOR TO DOOR & TO MANY VARIED OUTLETS
 CONTACT **LOUISE GISSING** FOR PRICES AND QUERIES
LOU@TIDECOLLECTION.COM
 OR CALL 01728 833003

INSIDE YOUR MAGAZINE...

THE RED HOUSE REOPENS 5
 - Visitors welcome to the former home of Benjamin Britten & Peter Pears, shaped by a love of art, design, music and nature

FROM ROB RINDER 7
 - Presenting the Orion Orchestra of outstanding young graduates

BRIGHT SPARKS PANTO PRESENT PETER PAN 8
 - Expect a lively, fun-filled performance!

YOUR LIFEBOAT STATION NEEDS YOU! 9
 - Youth Activity Scheme for 16 to 18 year olds.

'STREET SWEEPER' 11
 - A compelling novel exploring race, sexuality and love from Aldeburgh based author Bren Gosling

THORPENESS COUNTRY CLUB
Country Club
New Seaside Sweethearts Package

Credit: Images By Anna

Book your Seaside Sweethearts wedding before 30th June 2026 and receive an engagement shoot worth £300 on us.*

For further details visit www.thorpenesscountryclub.co.uk/weddings

*Terms and Conditions apply.

4 Truman Lodge, Thorpeness

Platinum Trusted Service Award 2025

suffolk hideaways
 coastal and country holiday retreats

Thinking of letting your holiday home?

We know choosing an agency to let your property can be a big decision, let us make it easy for you.

A friendly and local team | Excellent occupancy levels
 A Marketing or Managed service | Multi-channel marketing
 Peace-of-mind damage cover | Professional photography
 No restrictions on use of your property

To find out more please phone, visit our website or pop into our office in **Aldeburgh** for a chat.

01728 666 300 | suffolkhideaways.co.uk |

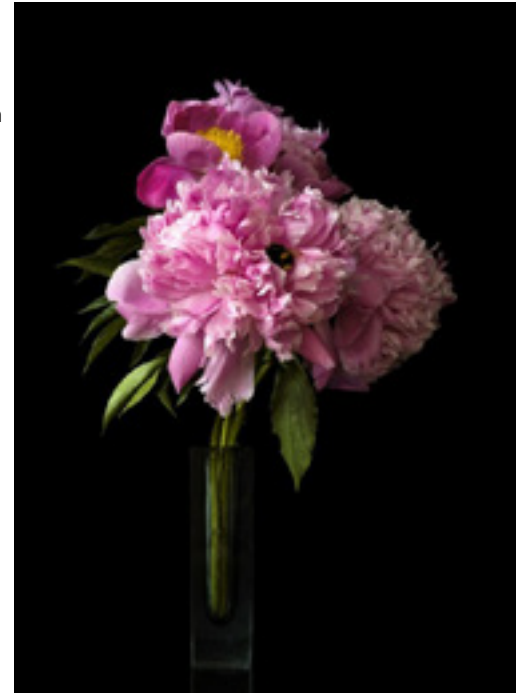
ALDEBURGH PHOTOGRAPHY GROUP

The next meeting of the Aldeburgh Photography Group will be held on **Wednesday 20 April** at 7.30pm in the Aldeburgh Library. This month we are very pleased to welcome Shelley Nott, a local photographer, who recently had a successful exhibition in the Ballroom Arts Gallery in Aldeburgh. The subject of her presentation is *'Still Life and the Art of Slow Photography'*. Her talk will be based around the theme of getting the most out of natural light. Her practice is influenced by the Dutch Masters of the 17th and 18th centuries who used window light so beautifully. She will illustrate how best to harness this most unreliable of light sources.



A reminder that we are a friendly group and we are keen to welcome everyone from beginners to experienced photographers, from users of iPhones to the latest DSLRs.

We do not run competitions which put too many amateur photographers off joining local photography groups.



Instead, we aim to help each other learn and improve our work.

If you want to know more, or if you want to check for up-to-date information on our meetings, please contact us through our website: aldeburghphotographygroup.org.uk

Spring Dining with

THE
HOTEL FOLK

From overdue catch ups to occasions or 'just because', make time spent together special with The Hotel Folk.

Visit www.thehotelfolk.co.uk/eat-drink to make your reservation.

THE RED HOUSE REOPENS



The Red House was the home of Britain's most famous 20th Century composer Benjamin Britten and his partner, the singer, Peter Pears. Shaped by curiosity, hospitality and a love of art, design, music and nature, it is more than a home, it tells their story.

After closing for winter renovations, The Red House reopens on 2 April, welcoming visitors back to its unique atmosphere and intimate charm.

Britten and Pears moved to The Red House in 1957. Its peaceful setting allowed Britten to work without distraction and is a key reason they made it their lifelong home. The Grade II 17th-century farmhouse offers an accurate picture of their life together, filled with an eclectic mix of art, artefacts, furniture, and furnishings that transport visitors back in time.

Outside of the main house lie five acres of much-loved gardens, once used for entertaining and garden games. Today winding pathways encourage visitors to slow down and enjoy the stunning views that open outward to the Suffolk landscape. The gardens remain wildlife-friendly, retaining original planting, and featuring many sculptures from the Britten and Pears' art collection.

New for 2026, the exhibition *'Before Life and After'* (2 April - 30 June) celebrates the people that surrounded Britten in the last three years of his life. It will include the people closest to him; friends, family and colleagues who cared for Britten and were key to ensuring his life and music would endure after his death, poignant as we mark 50 years since Britten's passing in December. This will run alongside the main exhibition *'Spiritual Britten'* (2 April - 1 November), curated by Paul Edmondson, which explores the spiritual aspects of Britten's life and music, looking at the defining moments and works that illustrate his motivations as a composer: his passions and the beliefs that shaped him and the works he created. Sacred music was a constant thread throughout Britten's career.

Though not devout, the Christian values and routines of his childhood shaped his approach to God and the music he composed.

Place Weekend (10 - 12 April) will include an Archive display exploring Britten's connections with Suffolk, alongside live music and tours of the House.

Further additions for this season also include:

- Guided Tours - Wednesdays throughout the season.
- Art Tours - Discover their love of art and the many pieces displayed in the house.
- Garden Tours – Explore the surrounding flowerbeds and kitchen garden.
- Mini Music Makers - A free weekly session for 0 - 5 yr olds every Friday.
- Dreamworld family space - Designed by illustrator Ella Statham, offering a fun, whimsical exploration of the lives and loves of the composer and singer.

On the **8th & 9th April** there will be some **Easter Family Fun** - Easter activities include storytelling with interactive sounds, an opportunity to make an Easter-themed musical instrument, and an audio Easter Egg Hunt offering the chance to explore The Red House Garden. 11am, 12noon, 2pm & 3pm.

Activity at The Red House during the Aldeburgh Festival (12 – 28 June) includes:

- Ending and beginning (12 – 28 June): an Archive exhibition highlighting Britten's later years.
- National Garden Scheme (17 June): celebrating the wonderful gardens.
- Painting Britten: 100 Visions of the Music (18 June): artist Jane Mackay celebrates Britten's music in a collection of 100 paintings.
- Solstice Yoga (21 June): sunrise yoga on the lawn.



Benjamin Britten and others at Orford Church.
Photo: Brian Seed

The Railway Inn

Recently purchased from Adnams- opened in April.

Traditional pub with a warm welcome!
 Located at the top of the town as you come into Aldeburgh, just a 5 minute walk to the beach.



- Live music every weekend - check our FB and Instagram pages to see whats on this month
- Great choice of lagers, ales, spirits and cocktails
 - Dogs welcome
 - Disabled access + facilities
- Pool table, dart board, cards and games available!

Our opening times:

Mon - Thurs 12-11 | Fri + Sat 12-12
Sun 12-10:30

therailwayinnaldeburgh therailwayinn_aldeburgh

1 Leiston Road, Aldeburgh IP15 5PP
07495 918642



10 YEARS.
THOUSANDS OF HAPPY CUSTOMERS.
ONE INCREDIBLE COMMUNITY.

Since 2016, Torrens Chauffeurs has been more than just a journey. We've been there for the early-morning airport runs, wedding celebrations, corporate travel, and those long-awaited trips home. For the past decade, you've trusted us to get you where you need to be — safely, comfortably, and on time. Thank you for being part of our story.

Whether you're travelling for business or pleasure, we offer a full range of services to suit your needs, including:

- ♦ Regular Cars
- ♦ Executive Passenger Transporters
- ♦ Executive Vehicles
- ♦ Prestige Cars
- ♦ Professional Chauffeur Services

Your Journey. Our Priority. 10 Years & Counting.

Driven by Punctuality. Defined by Trust.

Book your next ride:

07532 044085 / 01728 573573

enquiries@torrenschaffeurs.com

www.torrenschaffeurs.com



ALDEBURGH JUBILEE HALL

Friday 10th April, 2pm & 6pm,
 Saturday 11th April, 11am & 3pm
 Sunday 12th April, 11am

BRIGHT SPARKS PRESENT
PETER PAN



Peter Pan

Tuesday 14th April, 10am – 12pm

CUPPA & COMPANYY



Cuppa & Companyy

Saturday 18th April, 10am – 1pm

SPRING MAKERS' MARKET

Friday 24th April 11am

JUBILEE CHAMBER CONCERT:
THE WARD PIANO QUARTET



Jubilee Chamber Concert

Friday 24th April, 7.30pm

JUBILEE GOES GLOBAL
PRESENTS SEFO KANUTEH



Sefo Kanuteh

Saturday 25th April, 11am

TALK: LOIS GUNN, WINNER OF
THE GREAT POTTERY THROWDOWN



Lois Gunn

www.aldeburghjubileehall.co.uk Tel: 01728 454 022

AldeJubileeHall aldeburghjubileehall_ AldeburghJubileeHall



Independent Local Removal Company
 – 45 years' experience



Removal Storage Shipping

Tel: 01394 460498

www.pooleyremovals.com

E: info@pooleyremovals.com



FROM ROB RINDER..



On 16 May, at Aldeburgh Jubilee Hall, I will have the pleasure of presenting the Orion Orchestra in a programme that reminds us why this corner of Suffolk has long punched above its weight in cultural life. Aldeburgh is not simply picturesque it is purposeful. Ever since Benjamin Britten rooted his festival here, this coastline has stood for the idea that serious music belongs not only to great capitals but to communities.

That idea that music belongs to everyone is the thread running through this concert.

The Orion Orchestra was founded to bridge the precarious gap between study and the profession, taking outstanding young graduates and giving them the platform their talent deserves. We talk often about social mobility in abstract terms. Music education makes it tangible. It teaches rigour, teamwork, courage and the discipline of listening not only to notes but to one another. For many young people it is the first experience of being part of something larger than themselves. That is not decorative it is formative.

The programme itself embodies that argument. Vivaldi's Four Seasons was the populist sensation of its day, vivid, dramatic, almost theatrical in its depiction of storms and sunlight. It spoke to audiences directly. Mozart's Sinfonia Concertante is in a different register, a masterclass in dialogue, violin and viola in conversation - distinct yet inseparable. Between them these works remind us that music is both storytelling and citizenship.

We are joined by the remarkable violinist Danny Koo whose reach extends from classical stages to the vast audiences of contemporary Korean popular culture alongside the brilliant violist Meghan Cassidy. Their presence signals something important.

Accessibility does not dilute excellence it expands it. Inviting new audiences into classical repertoire is not compromise - it is confidence.

In an age that can feel fractured and impatient there is something profoundly civilising about sitting together in a hall and listening. No algorithm, no shortcut, just human beings making sound in real time. Aldeburgh understands this instinctively. It has built a reputation not on spectacle but on seriousness of purpose.

If you have never thought of yourself as a classical music person, I gently suggest that the category is redundant. Music is one of the few languages that requires no passport and no prior qualification. It is a great leveller precisely because it asks only that we show up.

That is why this evening matters. Not simply because the playing will be superb, although it will but because every ticket affirms a belief that culture in communities like ours is not an indulgence but an inheritance worth sustaining.

And that is something well worth gathering for.

Rob Rinder

16th May 2026 - Proceeds to local charities. Tickets: £40, £30, £20, £15; Students: £10 (not available online). A single £4.50 transaction fee applies to all online bookings (per order, not per individual ticket). Orders made in person at the box office are exempt from transaction fees.
<https://www.ticketsource.co.uk/aldeburgh-jubilee-hall/orion-orchestra-with-meghan-cassidy-and-danny-koo/e-yjevrv>

ORION ORCHESTRA with *Meghan Cassidy & Danny Koo*

Viola | Meghan Cassidy

Violin | Danny Koo

Programme
 W.A. Mozart, *Sinfonia Concertante*
 Antonio Vivaldi, *The Four Seasons*

Sat 16 May 2026, 7:00PM
 Aldeburgh Jubilee Hall, Suffolk, IP15 5BN

presented by Rob Rinder

BRIGHT SPARKS PANTO PRESENTS PETER PAN!

APRIL 2026

Bright Sparks

40TH ANNIVERSARY PRESENTATION OF

THE SWASHBUCKLING FAMILY ADVENTURE OF

PETER PAN

BASED ON THE ORIGINAL WORKS BY J.M. BARRIE

HOOK YOUR TICKETS NOW!
£17.50 PER PERSON

Aldeburgh Jubilee Hall
Crabbe Street, Aldeburgh IP15 5BN

Friday 10th - Sunday 12th April 2026
Fri 10th - 2pm & 6pm | Sat 11th - 11am & 3pm | Sun 12th - 11:00am

Box Office Open Tuesdays & Thursdays 10am to 12pm
Tel: 01728 454022 or Email: manager@aldeburghjubileehall.co.uk
Tickets | <https://aldeburghjubileehall.co.uk/whats-on>

Audiences can expect a lively, funny and heart-warming pantomime, packed with the traditional ingredients Bright Sparks is known for: colourful characters, original humour, lively music and plenty of opportunities to boo the baddies and cheer the heroes.

From the Darling nursery to the pirate ship and the magic of Neverland, the show promises excitement for all ages.

Bright Sparks Panto has been performing in the area for four decades, staging favourites including Rapunzel, Snow White, Dick Whittington and more. The group prides itself on producing professional-standard amateur pantomimes, with self-written scripts, imaginative staging and a strong focus on storytelling.

The cast for Peter Pan ranges in age from five to sixty-and-a-bit, reflecting the welcoming, multi-generational spirit that has kept Bright Sparks going for forty years.

Join us this April as we celebrate 40 years of laughter, adventure and community spirit — and come with us to Neverland!

Rebecca Vincent

Bright Sparks Secretary and Assistant Chairman

Bright Sparks Panto is celebrating a special milestone in 2026, marking 40 years of bringing family pantomime to local audiences - and what better way to celebrate than with one of the most magical stories of them all, Peter Pan?

The group has long wanted to stage this much-loved classic, but until now it has felt just out of reach. With its flying, fantasy and sense of adventure, Peter Pan is a show that demands ambition - making it the perfect choice for an anniversary year.



LIVE WELL HUB LEISTON

Sizewell Creative art exhibition comes to Leiston!

A showcase of artwork created by the Sizewell C workforce.

VENUE
The Live Well Hub, Waterloo Avenue,
Leiston, Suffolk IP16 4HF

VISITING HOURS
Mondays, Wednesdays and Fridays 9am-5pm*

*Evening and weekend visits available on request. Call 01728 808388 or email livewellmanager@leistoncouncil.gov.uk

YOUR LIFEBOAT STATION NEEDS YOU!



Aldeburgh RNLI is pleased to announce they are starting a Youth Activity Scheme for 16 to 18 year olds. If you are based in Aldeburgh, Leiston, Saxmundham, Snape or anywhere in between you can learn activities such as ropework, basic first aid, basic navigation, use of Personal Protective Equipment and Lifejackets, preparing Lifeboats and equipment for launch, assisting in recovery of Lifeboats, radio use, throw bag training, marshalling, and maintaining the lifeboat station, amongst other skills. Some of these activities can be used for Duke of Edinburgh Bronze and Silver level 'Learn a new Skill' and 'Volunteering' components. Please note that RNLI Aldeburgh are not running a Duke of Edinburgh scheme, but they can help those who are undertaking the qualification. Youth activities at the Lifeboat Station will always be done under the direct supervision of trained volunteers who have been DBS checked. Parental permission and support is mandatory.

If you are interested in the Youth Activity Scheme at the Aldeburgh Lifeboat station, please email Linda_Hall@RNLI.org.uk or leave a message on the Lifeboat Station telephone: 01728 452552

Aldeburgh Lifeboat Station are looking for new volunteers aged 18 - 70. Find out more about becoming boat crew, shore crew, a launch and recovery tractor driver, part of the visits team or a shop volunteer at [rnli.org/support-us/volunteer/volunteering-opportunities](https://www.rnli.org/support-us/volunteer/volunteering-opportunities)

Celebrate 200 years of your local lifeboat station

Aldeburgh Lifeboat Station is open every Saturday from 10.30am to 4pm. Pop in and meet Ralph, the Atlantic 85 lifeboat and read the station history in boards around the boat hall.

Brew with the Crew – On the last Saturday of every month you can chat with volunteer crew members over a cuppa. Come along and ask your questions, sign up to join, or share your links to the lifeboat family. Check social media for timings.

Please be aware that all training exercises, station drop in and Brew with the Crew are subject to operational requirements. Follow RNLI Aldeburgh on social media for dates and time of Brew with the Crew, planned training exercises and to learn more about their history.

OLD HALL SOUTHWOLD CAFE & WALKS

Spring Makers Market

FREE ENTRY

Sunday 3rd May 2026
10am - 3pm

OVER 55 STALLHOLDERS UNDER THE COVER OF OUR BIG BARN!

Live music | Onsite cafe | Free parking

OLD HALL CAFE & WALKS, HALESWORTH ROAD, REYDON, IP18 6SG

SPRING MAKERS MARKET

Join us at Old Hall Southwold on Sunday 3rd May as we kick off the 2026 season with our first Makers Market of the year.

With over 55 talented makers joining us, you'll find a vibrant mix of jewellery, ceramics, homeware, textiles, woodwork, fine art, cakes, cosmetics, fashion, glassware, candles and more under the cover of our Big Barn.

Alongside the stalls, enjoy live music, delicious street food, and our dog friendly café serving breakfasts, lunches, and great coffee.

The playpark will be in full swing too, giving little ones plenty of space to burn off energy on our zip wires and jumping pillows.

The market is free to enter, with plenty of onsite parking and beautiful walks along the Blyth estuary.

Come and enjoy a relaxed, creative, family friendly day out at Old Hall — we can't wait to welcome you.



A brand-new comedy drama is to premiere at the Leiston Film Theatre in September 2026. 'Mourning Campers' has been written by Leiston Film Theatre manager Wayne Burns and is being brought to the stage under his 'Team B Productions' banner, who also are responsible for creating the venue's popular annual Pantomimes. Inspired by the iconic sit-com, Hi-de-Hi, Mourning Campers is set in a Suffolk holiday camp in the 1980s and follows the drama behind the scenes and on stage at Archers Holiday Camp. At a time when the package holiday is growing in popularity, what can be done to keep the campers coming? Thankfully, the campsite owner has an idea and it's now up to the staff to make it a success. The idea for this comedy drama, which is deemed suitable for ages 16+, came literary out of the blue - 35,000 feet off the ground! "We were returning home from Florida in 2017 and I grabbed a few serviettes and scribbled various notes about possible characters, their mannerisms and a potential storyline to help me through the flight! These notes then sat in my panto box until 2024, when I finally started work on a draft script in earnest." said Wayne, who originally hoped to bring the show to the stage in 2025, but ended up postponing it until 2026, as he wasn't happy about one section of the script.

Wayne was a huge fan of the 1980s BBC sit-com Hi-de-Hi and in 2016 met Jeffrey Holland, who played the comedian Spike Dickson in the hit TV series. "I told Jeffrey that I was hoping to write a script about a Suffolk holiday camp and he wholeheartedly encouraged me to do it - so I did!" said Wayne.

Wayne has spent most of 2025 buying up authentic props for the production and will shortly start making a custom-built set for the play.

"Mourning Campers is something very different for us and requires a different discipline from those performing on stage. It's a very exciting exercise for us and there is already a lot of interest in this particular production." said Wayne.

Tickets are currently discounted for a limited time and available from the venue box office on 01728 830549 and via the Leiston Film Theatre website at: www.leistonfilmtheatre.co.uk

What's On at Leiston Film Theatre

Fri 3rd Apr at 7.00pm
Sat 4th, Sun 5th & Mon 6th Apr at 3.00pm
Tues 7th, Wed 8th & Thurs 9th Apr at 2.00pm

THE MAGIC FARAWAY TREE U

Fri 3rd, Sat 4th & Mon 6th Apr at 6.00pm
Tues 7th, Wed 8th & Thurs 9th Apr at 7.00pm

PROJECT HAIL MARY 12A

Sun 5th Apr at 6.00pm

EPiC: ELVIS PRESLEY IN CONCERT 12A

Fri 10th, Sat 11th & Sun 12th Apr at 3.00pm
Mon 13th, Tues 14th, Wed 15th &
Thurs 16th Apr at 4.30pm
Sat 18th & Sun 19th Apr at 2.00pm

THE SUPER MARIO GALAXY MOVIE PG

Fri 17th Apr at 7.30pm. LIVE ON STAGE

THE ELO ENCOUNTER

Sun 19th Apr at 6.00pm

LA SCALA MILAN COSI FAN TUTTE - MOZART 12A

Fri 1st - Thurs 7th May

MICHAEL 12A

Sun 3rd May at 7.30pm. LIVE ON STAGE



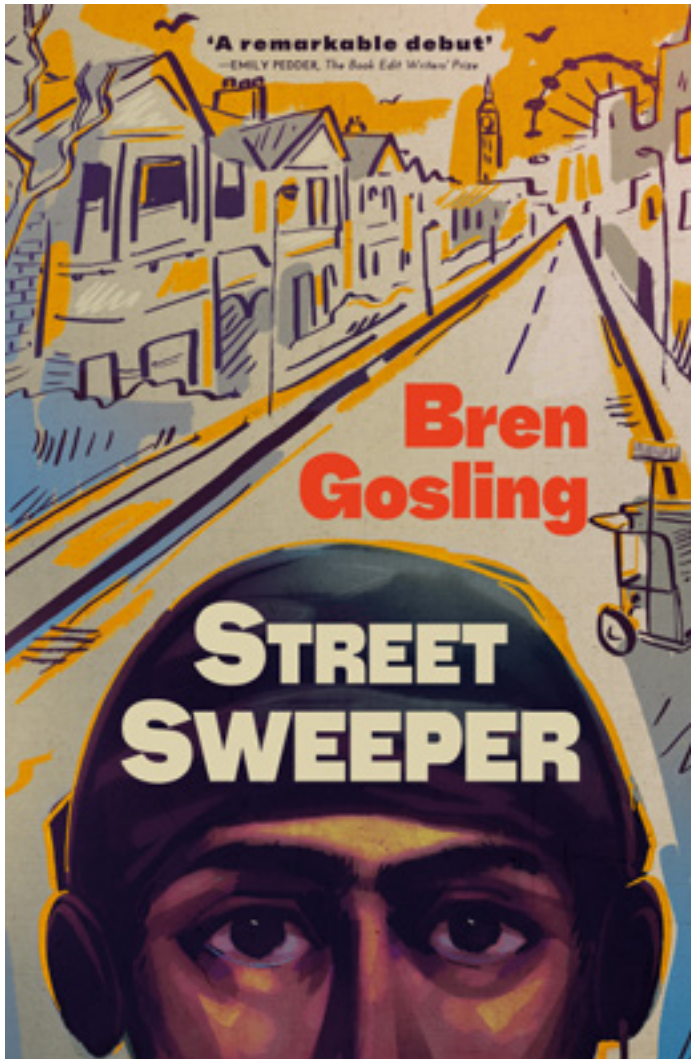
High Street, Leiston, Suffolk. IP16 4BZ

Tel: 01728 830549, or visit:

www.leistonfilmtheatre.co.uk

'STREET SWEEPER'

Exploring race, sexuality and love - Gosling's compelling story of the lives of two men in early 2000s London.



This compelling contemporary fiction novel follows Almir, twenty-one, and Roland, forty, as they navigate their growing relationship. 'Street Sweeper' is set in London over the Golden Jubilee summer of 2002.

When Almir, a twenty-one-year-old Kosovan ex-boy soldier, is relocated to London with a new identity, flashbacks undermine his ability to keep his job as a street sweeper.

Then he meets Roland, a forty-year-old British Jamaican, a Council surveyor trying to escape his Pentecostal upbringing, and a failed relationship with Shirl with whom he has a fifteen-year-old son. Roland and Almir become closer as Roland offers first friendship, then sex, yet Almir remains secretive about his past, and struggles to identify as gay, forcing Roland to question their relationship. And who is Muzzafer, the name Almir repeatedly shouts out during frequent nightmares? As tension builds, Almir confronts his involvement in a war atrocity, which threatens to destabilise his sanity and his new UK life. But, against all these powerful obstacles, Almir and Roland's love for each other continues to grow. Is it strong enough to last?

The novel was shortlisted for the New Anglia Manuscript Prize in 2023. Bren's plays have garnered two Offies nominations, and an ONComm Commendation.

Author Bren Gosling is based in Aldeburgh and grew up in Norwich, an alumnus of City University's Novel Studio, is published in numerous anthologies, and was a finalist of the London, Brighton and Exeter Short Story Prizes. 'Street Sweeper' won the Novel London Literary Prize in 2021, and the inaugural Book Edit Writer's Prize for under-represented writers.

His latest play, 'Invisible Me' starring Tessa Peake Jones will be at the Southwark Playhouse April 8th - May 2nd. Find out more about Bren's work at www.brengosling.com.

Bren explains: "My writing explores the narratives of quiet lives, extraordinarily lived, marginalised voices of overlooked people and places. A member of the LGBTQ+ community, I have researched the experiences of being a gay first generation British Jamaican man, through interviews; I spent time in a Pentecostal church.

I interviewed Kosovan immigrants to the U.K as well as the head of department of Albanian Studies at University of London to better understand Albanian culture and recent history. I shadowed a street sweeper at Walthamstow Cleansing Depot. What interests me is bringing untold stories to life by creating fictional narratives. This has been my focus in writing STREET SWEEPER."

Street Sweeper was released on 28th March; ISBN: 9781806340897; Price: £10.99

LEISTON PRESS
PRINTING **Signage** PUBLISHING

01728 833003 LEISTONPRESS.COM GLENN@LEISTONPRESS.COM



PRINTING



SIGNAGE

A FAMILY RUN BUSINESS WITH A WEALTH OF PRINTING KNOWLEDGE

If it can be printed Leiston Press will find a way to do it!

Whether you're searching for printed stationery, shop signage, vehicle graphics or bespoke promotional materials we can help.

We are committed to offering great customer service. We'll work with you to produce products and promotional materials to suit your needs and budget.

Our services include lithographic and digital printing, all types of signage (professionally installed too), printing and publishing.

You'll find our prices are very competitive and we offer **FREE DELIVERY** to customers in Suffolk.


DELIVERY TO ANYWHERE IN THE UK


SAME DAY TURNAROUND AVAILABLE


QUICK RESPONSE QUOTES


PART OF A CARBON CAPTURE SCHEME

CITIZENS ADVICE EAST

Holiday Scams

Have you ever turned up to an airport to find you are not booked on your flight or after an exhausting journey, you find your Airbnb flat is occupied by the owner and does not exist? This is more common than you think - £12 million a year is lost to travel fraud (MSE June 2024).

Fraudsters go to great lengths to get you to part with your money. They steal images of hotels and rented flats from legitimate reputable companies e.g. Airbnb, Booking.com and create fake websites and online adverts that look completely genuine. The deal will be much cheaper than elsewhere and they will put you under time pressure to book. You will be often asked for payment through a bank or currency transfer.

If you've had a holiday cancellation, fraudsters can set up fake social media accounts inviting you to claim a refund and get your details.

Top tips to avoid a holiday scam

Do your research: Check the website URL in your browser and make sure its legitimate. Search for company details on Gov.uk website to check if it's a registered. Is there a full postal address and contact details and not just a PO Box? Look for ABTA and ABTOT logos and verify membership. Don't rely on customer reviews from their own website.

Be cautious: Take time to make a decision and if the price is low its likely to be too good to be true.

Don't click links on emails or texts and only book a holiday or flight directly with the company on their own website. Look for the padlock icon in the email address bar.

Pay safely: There are different rules about whether you can get your money back depending how you have paid. Paying by credit or debit card may give you extra protection if things go wrong. If eligible, your bank should refund up to £85,000, (not if non-UK bank though).

By using a credit card you may be able to claim money back between £100.00 - £30,000 under Section 75 of the Consumer Credit Act. Asking for payment via transfer using Western Union or Moneywise is a red flag. These payments are difficult to trace and are not refundable.

What if you are scammed? Report the details to your bank immediately. Contact Report Fraud Tel: 0300 123 2040 or <http://reportfraud.police.uk/>

For other support contact Citizens Advice Consumer Helpline Tel: 0808 223 1133

Contact us for advice on this or any other issue. Our advisors are keen to help. You can email, phone or pop into our offices or outreaches.

<https://citizensadviceeastsoffolk.org.uk/>

EMAIL- advice@caes.or.uk

ADVICE LINE - 0808 278 7866 - Monday to Friday 10am to 2pm



RSPB Minsmere Nature Reserve
Wildlife - Shop - Café - Events - Family Activities









rspb.org.uk/days-out/reserves/minsmere


A1 Carpets 4U

By Gary Burden

For the complete A1 Home Selection Service

Carpets, Vinyl & Luxury Vinyl Tiles
Professional, reliable and competitive
Save ££££'s - We will beat any genuine retailer quote!

Tel: 01728 604396 Mob: 07419 375720
www.a1carpets4u.co.uk

ALDE FENCING

*Agricultural, Domestic, Commercial,
Repairs & Gates*

For a free quotation please contact Adam on

01728 633144 | 07896 766719

adamblowers@btinternet.com

www.aldefencing.com

SIBTON COUNTRY SUPPLIES LTD.

GARDEN MACHINERY

New Season Deals

Deals available on Lawnmowers, Strimmers
and all types of garden machinery

Wild Bird Food also available

The Forge, Sibton IP17 2JH | Tel. 01728 660 349

ALDEBURGH GARDENING CLUB

I have, despite my former opinions, become a fairly regular user of Facebook. I too, I discover, can become lost in videos of dogs with babies, donkeys with squeaky toys and surreal AI creations. My intellectual hubris is revealed and shredded.

One more useful group however is for plant identification. It's pleasing to be able to tell people what something is, though a distressing number of people post photos of leaves and shoots that could actually be pretty well anything. One photo a couple of weeks ago showed a twig with a good growth of lichen and the poster asked if it was a disease and would it harm her plant? The answer of course is no and no.

The amount of rain we have had and the fact that we have had no dry spells longer than a day or two since Christmas has been very kind to the lichens and they are more noticeable as a result. I have been lucky enough to visit three temperate rain forest areas, one in Chile, one on the edge of the Bale mountains in Ethiopia and one on the West coast of Scotland. Literally everything is covered in moss and lichen and the miniature forests covered in droplets of mist and rain are very beautiful.

Lichens are a combination of a specialised species of fungus and a single celled alga or a blue green alga (the difference between the two is subtle and not important). The algae photosynthesise for the pair and the fungus protects the alga from drought and prevents wind and rain dislodging it from the substrate. The fungus may also, very slowly, release minerals from the substrate to support them. The substrate can be practically anything, rocks, soil, twigs, or tree bark. Look at your roof, there is almost certainly some there. Not all white circles on tarmac are chewing gum, some are lichens.

You are probably most familiar with the flat round patches in grey, orange or yellow, and the photo shows a crustier type in a greener shade on my Forsythia. Some, in a shade of pale grey, are more 'grassy' in shape. If you want to see some they can be found in little tufts on twigs along the railway line from where the water leaves the fen to join the Thorpeness mere along to the turn to the golf course at Sheep Wash Crossing. Alternatively, it also grows in the mossy patches of grass in the meadow area of the North Warren RSPB reserve. These varieties are a sensitive indicator of clean air. Different substrates support different lichens.

In Scandinavia there are much taller versions of these grey tufty types and are the lichens eaten by reindeer in the winter. I was lucky enough to visit a friend in Sweden some years ago and we went to a reserve which was a combination of forest interspersed with big round grey rocks (glacial erratics), which the Swedes say are trolls frozen in position by the daylight. The rocks are covered in grey tufty lichen up to 8 inches tall, looking like hair I suppose. Where there is soil between the rocks there are trees, mostly conifer, and under them are moss and bilberries. Lots of yummy bilberries when I was there at midsummer.

Picking of these lichen for making Christmas decorations had become a problem there and they are now protected, but presumably not from the reindeer.



TONY BROWN'S FUNERAL SERVICE Est.1979

Proudly independent family run business

The Funeral Parlour, New Cut, Saxmundham, Suffolk, IP17 1EH
T:01728 603108

E: office@tonybrownsfuneralservices.co.uk
www.tonybrownsfuneralservices.co.uk



Owners of The Greenwood Burial Ground, Farnham

Remedial, Orthopaedic and Sports MASSAGE THERAPY Aldeburgh

07480 372485
flowphysioandyoga@gmail.com

Kerry Walshaw HCPC, CSP
Specialist Physiotherapist
20 years of helping people manage pain and move well



General Building • Decoration
Property Maintenance • Carpentry
Plumbing • Electrical • Kitchens & Bathrooms
Roofing • Windows & Doors
Carpets & Flooring • Interiors



Tel: (01728) 453146 Mob: 07831809494
email: enquiries@colourbankaldeburgh.co.uk

www.colourbankaldeburgh.co.uk

Client & Professional References Available

SALE SALE SALE SALE SALE SALE

25% off
HOUSE BLINDS



Call 01953 544 041

norwichsunblinds

T&Cs apply, please visit: www.norwichsunblinds.co.uk

Protect and transform your home with Anglian Rooftrim

Stylish fascias, soffits and guttering that last year after year. Made in Britain, low maintenance, and built for all weather.



Call today for your free quote

0800 876 6408

REF: LP1125



ALDE VALLEY SUFFOLK FAMILY HISTORY GROUP

Looking at Military Records by Graham Bandy

At a recent meeting members of the Alde Valley Suffolk Family History Group were treated to a master class by Graham Bandy in ways to identify service records, and the history of their ancestors by identifying pieces of kit and uniforms.

Graham started his talk by telling us of his long term interest in the Armed Forces and military history. He had served in the Army twice, once in the Royal Military School of Music and for a second time as an Army nurse. He writes articles each month for Family Tree magazine. Looking at photographs of people in uniform he was able to correctly identify which units they had served in and at what time. If there was a picture of a First World War soldier wearing or carrying a steel helmet the photograph was taken in 1916 or later: Graham told us that Britain didn't use steel helmets until then. It seems easy if you know your uniform items and Graham certainly did. The position a badge was placed on a tunic or sleeve told him during which period the item was worn. Cap badges, medals, styles of headgear, belts, collar badges and cuffs all help to date the uniform wearer accurately. These also help him to identify in which theatre of war they served.

To find out more about our ancestors it would be easy if we could ask them what we want to know. Unfortunately, most of us don't think to do that until all family members who would know the answers to our questions are no longer with us. So, we need to look at surviving documents and old photographs. The census may help, rolls of honour, birth, marriage and death certificates can also give clues. If your soldier is seated on a horse, a military horse will be wearing two sets of reins.

The senior service is the Royal Navy, which has been in existence for more than one thousand years. Naval officers' records starting in 1660 can be found at The National Archives. Any surviving documents prior to that date will be found at The National Archives under the State, Chancery and Exchequer series. Searching The National Archives website for your sailor ancestor should prove fruitful. Army lists for Officers started in 1703 and have been published annually from 1740. Lists for other ranks began in 1809.

The Royal Air Force began officially on 1st April 1918; the Air Force lists are available at The National Archives.

One warning from Graham – Artificial Intelligence cannot be trusted!

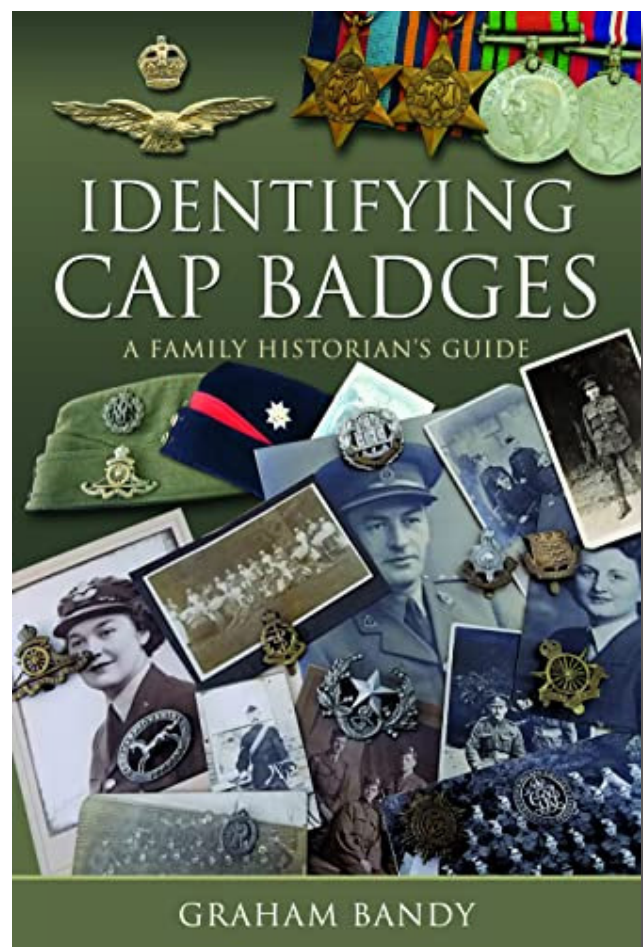
Pat Carter

Further programme:

Monday 20th April: Annual General Meeting

Monday 18th May: Apprenticeship Records - Richard Holt

Monday 15th June: Pauper Ancestors - Clare O'Grady



Hello Aldeburgh



We are your local community radio station, broadcasting online to bring you a varied mix of music programmes, stories and information about what's on in our area.

Have you discovered us yet?





Listen online at: www.abcradio.co.uk



via the app and on Alexa





ALLVAC

SERVICE & REPAIR

KIRBY & DYSON SPECIALIST

HAVE YOUR VACUUM CLEANER
COLLECTED FULLY SERVICED AND
RETURNED AT YOUR CONVENIENCE FOR

£35

ALL MAKES AND MODELS

PAUL LAYTON
01379 871095 OR 07866 549642

HUBBARD

Domestic Appliance Repairs

- Ovens
- Dishwashers
- Washing Machines
- Fridges
- Freezers
- Tumble Dryers
- Cooker Hoods
- Microwaves

Supply ✓

Install ✓

Repair ✓

- Bosch
- LG
- Hotpoint
- Samsung
- Beko
- Hisense
- AEG
- AND MANY MORE!

Telephone: 01394 799997 | 07728 403921

Email: admin@hubbarddar.co.uk | Website: www.hubbardappliancepairs.co.uk

Visit Our Showroom: 4 Beach Station Road, Felixstowe, IP11 2DR

PEARCE & KEMP

LIMITED

Tel: 01986 872130

enquiries@pearce-kemp.co.uk • www.pearce-kemp.co.uk

Unit 20, Halesworth Business Centre, Norwich Road, Halesworth IP19 8QJ

DOMESTIC • COMMERCIAL • INDUSTRIAL • STREET LIGHTING

REWIRING • LIGHTING • EXTRA SOCKETS • SHOWERS
ECONOMY 7 HEATING • PORTABLE APPLIANCE TESTING
INSPECTING & TESTING • DATA CABLING • EMERGENCY LIGHTING
FIRE ALARM INSTALLATIONS • FREE ESTIMATES
PART P INSTALLERS

OVER 50 YEARS EXPERIENCE



BUILDING & ROOFING

T: 01728 451933 M: 07831 700135

W: www.ianculf.co.uk E: ianculf@hotmail.co.uk

For All Your Roofing & Building Requirements
FREE ESTIMATES 30 YEARS EXPERIENCE

Brickwork, Flat roofs, New roofs, Roof repairs, Lead work,
Conversions, New builds, Paving, Fibreglass roofing,
Rubber Roofing, General repairs & Maintenance etc.




HOLMES GLAZING

UPVC Timber & Aluminium Windows & Doors
Glass cut-to-size
Repairs & Maintenance
Hardie Plank Cladding
Fascia, Soffit & Guttering
Mirrors & Coloured Splashbacks
Double Glazed Units & Specialist Glazing
Conservatories, Porches & Warm Roofs

NEW Specialist
Suppliers of Zero
90 Triple Glazed
Systems



Zero90 range is the 1st
of its kind in the UK

- 90mm Casement
- 48mm Triple Glazed
- Unrivalled Energy Saving



01728 648678
www.holmesglazing.co.uk
holmes.glazing@yahoo.co.uk

JOHN BRIDGES GARDEN LANDSCAPER

PATIOS | RAISED BEDS | FENCING
PERGOLAS | TURF LAYING

30 yrs experience

01728 832972 | 07787163249
bridgesjac@gmail.com

RIVERVIEW GARDENING

Garden & Grounds Maintenance

Providing all aspects of garden and grounds
maintenance to both domestic and commercial
customers, Ride-on lawnmower available
Green waste removed

EXPERIENCED - QUALIFIED - INSURED

Call Oliver - 07779152936 - 01728561990
Email - riverviewgardening@gmail.com

I.C.KING LTD

Painters and Decorators

www.ickingltd.co.uk

5 The Green, Chediston,
Halesworth, Suffolk, IP19 0BB
Tel: 01986 785281 Mob: 07944 647553
Email: ickingltd@gmail.com

University of Essex Choir
Britten Pears Chamber Choir

Orchestra of the Age of Enlightenment

An evening of
Sacred Splendour

Joseph **Haydn**
Missa in angustiis
"Nelson Mass"

Wolfgang Amadeus **Mozart**
Regina coeli

George Frideric **Handel**
Dixit Dominus

Conductor **Ben Vonberg-Clark**

Saturday 09 May 2026, 7:00pm

Snape Maltings Concert Hall,
Snape, Suffolk IP17 1SP

Tickets: £33, £27, £17; students & under 18s £10
Book at: www.brittenpearsarts.org/

University of Essex | BRITTEN PEARS ARTS | University of Essex Choir | Orchestra of the Age of Enlightenment

Join University of Essex Choir, Orchestra of the Age of Enlightenment and special guest soloists for: 'An evening of sacred splendour' - Saturday 9th May, 7pm at Snape Maltings

The University of Essex Choir returns to Snape Maltings this May with an exuberant programme of Mozart, Handel and Haydn. Musical director Ben Vonberg-Clark will lead the choir, who will be joined by the acclaimed Orchestra of the Age of Enlightenment, the Britten Pears Chamber Choir and four talented soloists [see below].

This evening of glittering sacred music unites three titans of the Baroque and Classical eras. The programme opens with Mozart's radiant Regina coeli, K.127, a work that captures his gift for combining profound spirituality with effortless melodic grace. This leads into the uplifting Dixit Dominus, where Handel demonstrates his early explorations of counterpoint and dramatic expression. The evening reaches its zenith with Haydn's monumental Missa in angustiis, better known as the 1798 "Nelson Mass", a work born from the composer's mature genius against the tumultuous backdrop of the Napoleonic Wars. Under the expert guidance of conductor Ben Vonberg-Clark, this collaboration promises to illuminate all three composers' shared commitment to music as spiritual expression.

The University of Essex Choir, renowned for their precision and musicality, will be joined by the Britten Pears Chamber Choir, with both perfectly complemented by the orchestra's period-informed approach. Soloists: Soprano: Charlotte Bowden; Alto: Rebecca Leggett; Tenor: TBC; Bass: Božidar Smiljanić



Theronda and Lucy are proud to bring to you their 3rd annual Art & Book show in Aldeburgh.

Theronda is the artist in residence at the gallery and studios of Kesgrave Arts at Kesgrave in Suffolk. She is inspired by the Suffolk skies and landscapes, particularly

of Aldeburgh and the neighbouring seaside towns.

She has a large body of work - acrylics, oils, drawings, metal sculptures and more - and has exhibited widely in the area. (see her website: www.kesgravesarts.co.uk)

Lucy was born in Aldeburgh and visits frequently from her animal rescue ranch 'Solace' in California. Lucy has an extensive background in real estate, newspaper and animal rescue and has published several books to date, most recently 'Tales from the Forest - The Adventures of Madame Dragonfly'.

She will be launching her new book - 'Chip the Naughty Seagull' at the Aldeburgh Gallery, April 16-22. Read her newspaper columns at www.LUNAbookspublishing.com

Welcome to the..
Theronda & Lucy
3rd Annual Art & Book Show

at The Aldeburgh Gallery,
Aldeburgh High Street,
(next to The Golden Galleon)

April 16-22, 10am - 5pm

Aldeburgh Memories - A collection
Theronda Hoffman

Book Launch
Chip The Naughty Seagull
Lucy Mason Jensen

For more info, contact Lucy
lucymasonjensen@gmail.com

PROJECT UPDATE

APRIL 2026

Our work along the A12 to bring forward junction improvements is progressing well and we would like to thank you for your patience as this continues.

A12 ROUNDABOUTS: We are on schedule to open the roundabout at Friday Street to traffic on Monday 30 March. Whilst the works will not be fully complete, this will be a significant milestone and will improve the traffic flow in the area and the safety of the roads at this important junction. Once the full work on the road structure of the roundabouts is complete, the community will start to see a reduction of traffic management in the immediate areas and later in the year landscaping and planting of flora will begin.

The roundabout that is being constructed at Yoxford is also progressing well and will be operational to traffic Tuesday 31 March. As with Friday Street, the roundabout will not be fully complete at this time, with landscaping and planting to commence later in the year.

PARK AND RIDES: Both the Southern Park and Ride (Wickham Market) and Northern Park and Ride (Darsham) are now open. Work will continue to increase the capacity of both car parks through to late summer 2026.

NORTHERN PARK AND RIDE (NPR): The roundabout that links the A12 to the Darsham Park and Ride is also being linked to the A12 in phases. The western arm of the roundabout is now linked to the A12 for traffic, we expect the roundabout to be operational by the end of March.

Traffic lights remain in place to pace the traffic flow. We are now working to increase the capacity at the NPR to 280 spaces.

AT THE SOUTHERN PARK AND RIDE (SPR) the access road at Wickham Market is due to open at the end of March, which is timed with the completion of the Cadent gas works that are ongoing on the slip road and roundabout. This enables us to increase our bus fleet to transport workers to and from the Park and Rides. The prescribed routes for the buses are along the A12 and B1122. Road signs will be put up on the A12 during March.

The local road improvements at Yoxford have been completed. The works included the construction of a signalised crossing across the A12 and access improvements to the High Street and the A12 (picture below). In early summer, further improvements on the A12 will commence at Marlesford and then Little Glemham; we will share further details on the Sizewell C Works Tracker.

RAIL: The improvements to the Saxmundham to Leiston rail line continue, with construction of the branch line to the Temporary Construction Area continuing at pace. Level crossing improvements and construction will require small road closures, which will be outlined via the Sizewell C Works Tracker: www.szcworkstracker.co.uk. Between 23 and 31 May Network Rail will be working on the rail line between Ipswich and Lowestoft. A bus replacement service will be in operation throughout.

Thank you for your patience as we work towards the completion of many of the road schemes and as always if you need to speak to us, please contact us via the **FREEPHONE 0800 197 6102***.

FORUM

SCHEDULE

Forum timings

2026 | 18:00 - 20:00
(Arrival from 17:45)

Main Development Site Forum	Wed 15 April	Leiston Town Athletic Association
Northern Transport Forum	Wed 6 May	High Lodge Darsham

For more information and for more forum dates visit sizewellc.com/community/forums

*Calls to 0800 numbers are free from UK landlines. Call costs from mobile and international numbers may vary.

VISIT THE WORKS TRACKER



New Road crossing at Yoxford

Sizewell C
The power of good for Britain

DATES FOR YOUR DIARY

EASTER SERVICES IN THE ALDE SANDLINGS BENEFICE

EASTER SUNDAY 5.45am – SUNRISE HOLY COMMUNION BENEFICE SERVICE AT THORPENESS BEACH

<p>ALDEBURGH PARISH CHURCH</p> <p>GOOD FRIDAY 9am – EASTER GARDEN MAKING 9.45am – WALK OF WITNESS WITH UNITED CHURCHES 12 noon – PRAYER STATIONS 1pm – MUSICAL REFLECTION 2pm – HOUR BEFORE THE CROSS</p> <p>EASTER SUNDAY 11.00am – HOLY COMMUNION</p>	<p>ALDRINGHAM PARISH CHURCH</p> <p>MAUNDY THURSDAY 6.30pm – HOLY COMMUNION</p> <p>EASTER SUNDAY 11.00am – HOLY COMMUNION</p>
--	---

<p>FRISTON PARISH CHURCH</p> <p>GOOD FRIDAY 2pm – HOUR BEFORE THE CROSS</p> <p>EASTER SUNDAY 9.30am – HOLY COMMUNION</p>	<p>KNODISHALL PARISH CHURCH</p> <p>GOOD FRIDAY 9.30am – JOINT SERVICE AT THE METHODIST CHURCH</p> <p>EASTER SUNDAY 9.30am – HOLY COMMUNION</p>
---	---

WE WISH YOU ALL A VERY HAPPY AND BLESSED EASTER

Please do keep in touch by visiting our website for service times and much more at www.aldeburghparishchurch.org.uk

APR 7 Family Wildlife Walk at Snape Maltings. A fun family stroll along reedbed and hedgerow in search of Snape’s birds, butterflies and dragonflies, beetles and bugs. This walk starts and finishes at Snape Maltings, IP17 1SP. Meet on the Quay at Snape Maltings. 10am – 12.30pm. Email: minsmerer@rspb.org.uk, phone: 01728 648281

APR 9 & 26 Minsmere Safari. An exclusive tour in our 4x4 vehicles, introducing you to some of Minsmere’s special wildlife, habitats and hidden history. Excellent photographic opportunities. Four people maximum per vehicle. Email: minsmerer@rspb.org.uk, phone: 01728 648281.

APR 14 SWT Alde Valley Group Talk: Gulls - more than just chip thieves by David Staff. 7.30pm at the United Reform Church, Leiston. £4 entrance fee (cash please). Free raffle

APR 23 Saxmundham History Society meeting. ‘Tales of Suffolk Smugglers’ by Barbara McElroy. We meet on the fourth Thursday of the month at 2.30pm in the URC, Chapel Road, Saxmundham. IP17 1BJ. Visitors £3. Annual membership £18. Enquiries to Jenny 01728 604608.

APR 25 Spring River and Reedbed Ramble at Snape Maltings. Join RSPB Minsmere’s expert guides as they help you to enjoy spring wildlife. Wading birds, ducks, geese and swans raptors, warblers and other resident species. This walk starts and finishes at Snape Maltings, IP17 1SP. Meet on the Quay

Nathan Hunt
Tree Services



Fully qualified and insured arborist and Professional Tree Inspector

All aspects of tree work covered
Tree Surveys • Arboricultural Reports
Crown reductions • Land Clearance
Tree Planting • Stump Removal
Felling • Firewood

Call Nathan on
07900 734124
Nathan.khan15@gmail.com

ALDEBURGH BOWLS CLUB

— Invite you to an... —

OPEN/COFFEE MORNING

SATURDAY 11TH APRIL 2026
10.30 AM - 12.30 PM

AT THE CLUBHOUSE
*Park Road, Aldeburgh,
(Next to the tennis courts)*

ALL WELCOME!

Join us for coffee, biscuits & find out more about our friendly club!

SUFFOLK CLEANERS LIMITED

**COVERING UP TO 20 MILES FROM
OUR OFFICE IN SAXMUNDHAM**
INCLUDING ALDEBURGH,
FRAMLINGHAM, LEISTON, ORFORD,
WOODBIDGE, AND BEYOND

- COMMERCIAL CLEANS
- DEEP CLEANS
- POST-BUILD CLEANS
- OFFICE CLEANS
- CARPET CLEANING

01394 822021

SALES@SUFFOLKCLEANERS.CO.UK

WWW.SUFFOLKCLEANERS.CO.UK

CONTACT US TODAY FOR A FREE ESTIMATE



Holiday Let Management & Marketing

Suffolk's largest independent
holiday letting agency
with 300 properties under
management

Only 5% commission for the first 3 months*

*VAT applicable. Exclusions apply, contact us for more details.

Website	Phone	Email
www.stayinsuffolk.com	01728 885262	office@stayinsuffolk.com

Contact us today for a free earnings appraisal

Also, listing your property exclusively with



BOOK REVIEW

'Fly, Wild Swans: My Mother, Myself and China' by Jung Chang

Hardback, £25



When Jung Chang's memoir of herself, her mother and her grandmother, *Wild Swans: Three Daughters of China* was published in 1991, it was a sensation.

The book is in the Top 10 Best of the Bestsellers list. It has sold over 13 million copies and has been translated into 40 languages. Now, nearly four decades and several books later – including a revelatory biography of Chairman Mao – Jung Chang has written this further memoir which brings the story up to date.

She looks back at the afterlife of 'Wild Swans' and what happened next to her, her country and the extraordinary impact of the book around the world.

Jung was fearful that reprisals would be taken by the regime against her family still in China, but such was her fame after publication of the book that the Chinese Government did not dare jeopardise relations with the West by prosecuting her.

World leaders like George Bush Senior confessed to her that they knew so little of China that her book taught them more than any of their intelligence services.

'Wild Swans' changed her life and it also moulded present-day China.

Jung's mother emerges as a woman of remarkable resilience and courage. She recounts how her mother gave up her job working for the party so she would not hold back her daughter's life as a writer in the West. Under Chairman Xi's current pro-Mao regime the pendulum is swinging back and Jung will probably never be able to see her mother in person again. It is unsafe for Jung to return to China and her mother is too ill to travel.

A moving and important story beautifully told, this book and its predecessor give such insight into China now.

Mary James
The Aldeburgh Bookshop

A NEW ERA FOR THE RANDOLPH

Few pubs can claim more than a century at the heart of their community, but The Randolph has been welcoming locals through its doors for an impressive 127 years. Now, the historic pub is beginning an exciting new chapter: for the first time in its long history, The Randolph has become a Free House.



The change means the pub is no longer tied to Adnams brewery, giving the team behind the bar the freedom to carefully select a wider and more varied range of drinks. Alongside familiar favourites, customers can now expect rotating guest ales, craft beers and ciders, as well as an expanded choice of spirits and wines. The move not only broadens the selection but also opens the door to showcasing independent breweries and producers.

While the bar offer is evolving, the character of The Randolph remains firmly rooted in tradition. Known for its friendly faces, relaxed atmosphere and loyal regulars, the pub continues to offer the same warm welcome that has defined it for generations.

For a venue with such a rich history, becoming a Free House represents the perfect balance between heritage and progress — honouring the past while embracing new possibilities. As this next chapter begins, The Randolph invites guests old and new to pull up a chair, raise a glass and be part of the story.

PHOENIX SINGERS

Experience Elgar's *'Dream of Gerontius'* at Snape Maltings!

This term Framlingham Phoenix Singers and Beccles Choral Society join forces to prepare for a joint concert at Snape Maltings presenting Elgar's spiritual epic, *'The Dream of Gerontius'*. The two choirs will be joined by The Lambeth Orchestra and acclaimed soloists. The date for your diary is Saturday 16th May, at 7.30pm.

Tickets are on sale now.

Experienced choral singers are welcome to join the choir for the term to perform this great choral work. Rehearsals are held at Sir Robert Hitcham's Primary School in Framlingham, from 7.30 to 9.30pm. For more details visit www.phoenixsingers.org.uk

Esther Mower

On behalf of Phoenix Singers



LIBRARY NEWS

Big Book Sale and Easter Draw - Saturday 11th April 10am to 2pm. Free refreshments. All welcome. Proceeds to Friends of Aldeburgh Library. (Please bring any donations to the library by Wednesday 8th April, thank you.)

Aldeburgh Library Foundation - Spring highlights

Our Monday morning physical courses at the Church Hall of Zumba, Stretch & Glow (chair-based) and Tai Chi.

'Joy of Watercolour' at the Fairfield Centre all continue through to mid- May.

'Artists & their Paintings' - hear about the life of Suffolk painter Anna Airy with award-winning local artist David Gillingwater as he recreates before your eyes Airy's palette and one of their works. **Thursday 2nd April 18:15-20:00.** £12.

'Nature exploration - the plants and insects of our area'. Wednesday mornings 10:30-12:30. Visiting a different area of Aldeburgh on foot each week. From **8th April to 13th May** with popular conservationist Stephen Massey. £72.

'Real Lives Memoir writing' with an experienced local author, who will enable you to create the structure you need to tell your story, and receive constructive feedback in a supportive environment, over six weeks as you develop your piece. Fridays 15:15-17:00 from **17th April to 22nd May.** £72.

Opening hours: Monday, Tuesday, Thursday, and Friday: 9:00 – 13:00; Wednesday: 9:00 – 18:00; Saturday: 10:00 – 15:00; Sunday: 10:00 – 13:00; EASTER: We will be closed on 3rd, 5th and 6th April (Good Friday, Easter Sunday and Easter Monday)

This issue was designed, printed & published by Leiston Press.

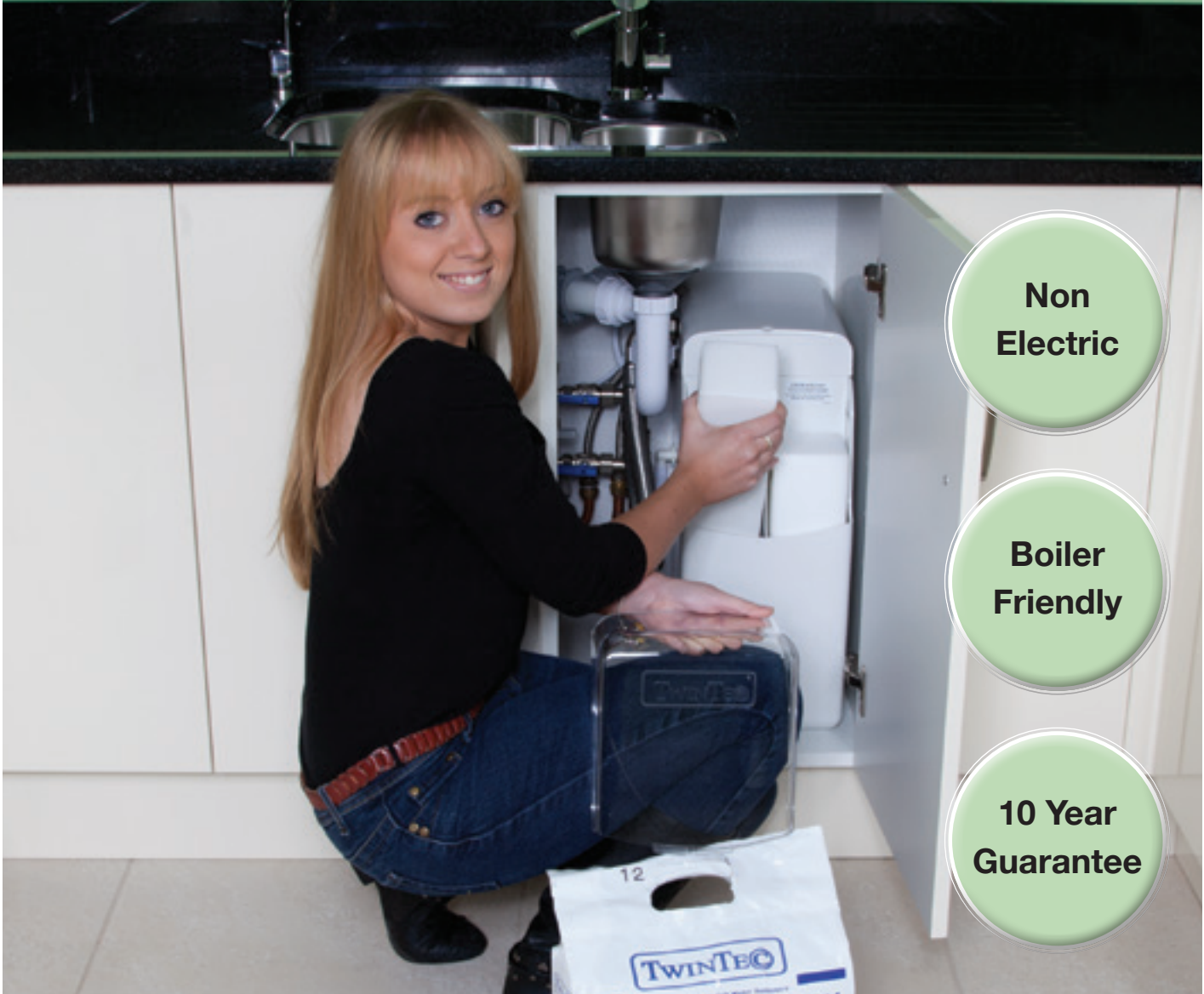
Aldeburgh Times is your free local paper, 2000 copies are printed every month. We distribute the magazines door to door and to many varied outlets. The next issue will be published Friday 1st May, copy deadline is 14th April - but the earlier the better to ensure inclusion.

Contacts/Advertisers/Editorial:

Louise Gissing at Leiston Press, Unit 1b Masterlord Industrial Estate, Station Road, Leiston, IP16 4JD
lou@tidecollection.com Tel 01728 833003

Reports, press releases; letters and other editorial contributions with news value are all welcome but are accepted on the understanding that there is no guarantee of inclusion and that they will be selected and edited at the editor's discretion.

PATMORE WATER SOFTENERS



Non
Electric

Boiler
Friendly

10 Year
Guarantee

*6 South Entrance
Saxmundham
IP17 1DQ*

Ipswich

Braintree

01728 633007

01473 713600

01376 334949

www.patmorewatersofteners.co.uk



SIZEWELL LETTINGS

— SERVICED ACCOMMODATION —

PREMIUM SERVICED ACCOMMODATION FOR SIZEWELL ENGINEERS

CONSIDERABLE DEMAND COMING THROUGH FOR ACCOMMODATION FOR THE UPCOMING OUTAGE:

- £50 per night budget
- Circa 50 bedrooms
- Any property (flat / houses)
- Leiston / Aldeburgh / Thorpeness
- Budget £50 per room per night
- Uninterrupted occupancy

If you have suitable accommodation near Sizewell and would like to discuss, please get in touch.

MAJOR RAILWAY ENGINEERING COMPANY LOOKING TO FURTHER ADD TO THEIR CURRENT TEAM:

- 20 Bedrooms
- 10th April 26 - 10th October 26 (with option to renew for further 6 months)
- Budget £40 per room per night
- Uninterrupted occupancy
- Ideally 3x 4 bed (Leiston or up to 15min drive to site)

If you have suitable accommodation near Sizewell and would like to discuss, please get in touch.

ESTABLISHED DRAINAGE CONTRACTOR ABOUT TO START WORKS LOCALLY - NEED ACCOM ASAP

- 18 Bedrooms
- Budget circa £50 per room per night
- Uninterrupted occupancy
- Mostly 2 / 3 / 4 bed properties required
- 30 min drive to Sizewell

If you have suitable accommodation near Sizewell and would like to discuss, please get in touch.

IS YOUR HOLIDAY LET UNDER-PERFORMING? THERE IS A BETTER OPTION. We provide long-term fully serviced accommodation for senior engineering professionals working locally.

Email: hello@sizewelllettings.com Website: sizewelllettings.com Phone: 01728 677888

TOILETS+

Portable Toilet Hire Specialists

10% OFF
THE TOTAL PRICE OF
ANY ORDER

PLACED BEFORE
31 MAY 2026

*Offer can be removed at any time.

Quote 'Suffolk Toilets'



📞 0800 606 100

🌐 toilets.co.uk

✉️ info@toilets.co.uk

