

...YOUR FREE LOCAL NEWS

AUGUST 2025

HALESWORTH **HOOT**

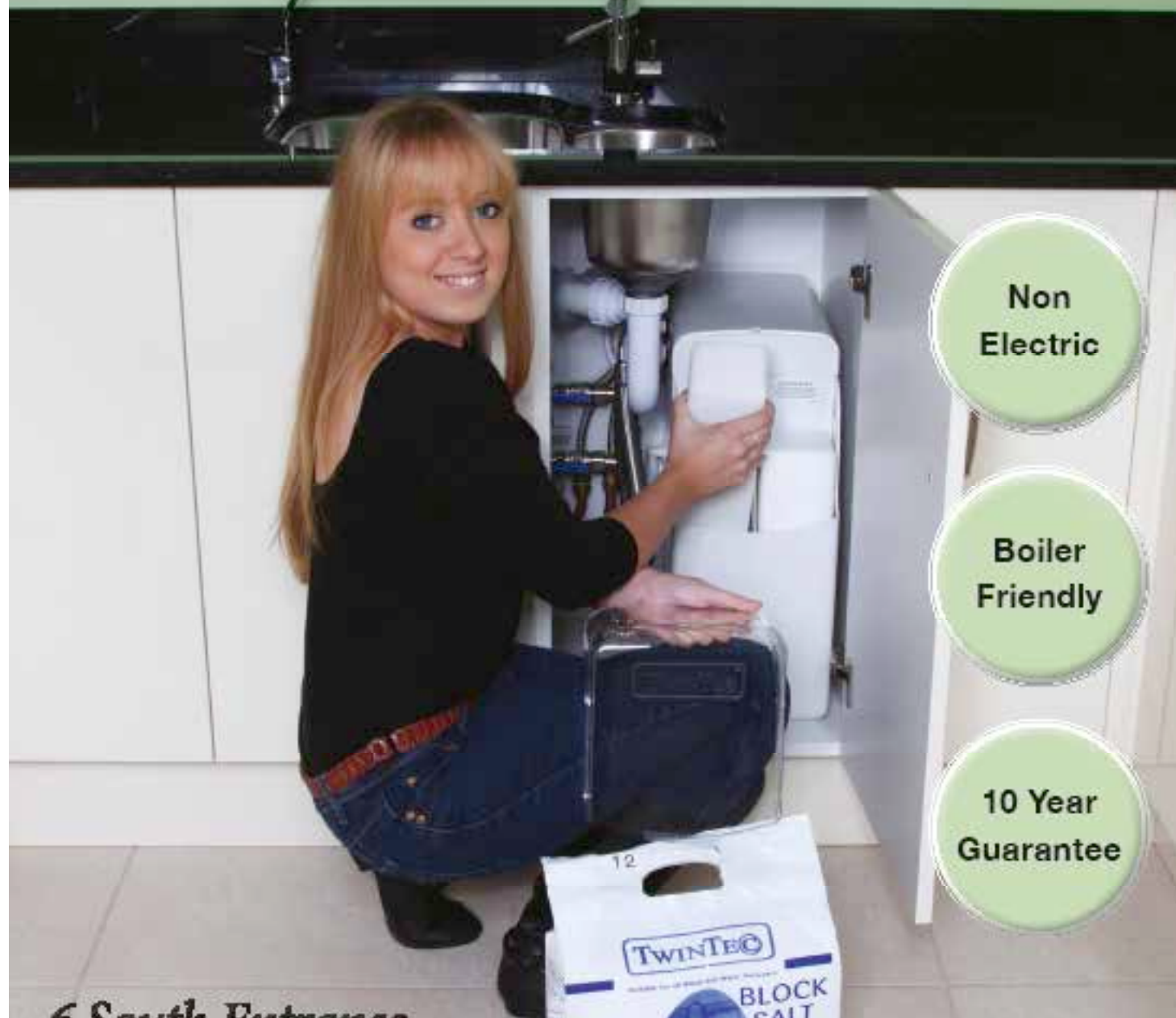


PART OF THE **TIDE COLLECTION**

ALDEBURGH TIMES WOODBRIDGE TALK SOUTHWOLD ORGAN SAXMUNDHAM NEWS LEISTON OBSERVER HALESWORTH HOOT

PATMORE

WATER SOFTENERS



Non
Electric

Boiler
Friendly

10 Year
Guarantee

**6 South Entrance
Saxmundham
IP17 1DQ**

Ipswich

Braintree

01728 633007

01473 713600

01376 334949

www.patmorewatersofteners.co.uk

A NOTE FROM OUR EDITOR



Halesworth's first ever Ale Day proved to be a great success with locals and visitors alike enjoying events all over town, another great community get-together which I'm sure will be repeated. More entertainment is coming with the return of 'Akenfield' – a stage production, Bungay Folk Festival a few miles down the road and Hubfest Music Festival at Huntingfield to name a few. Enjoy!

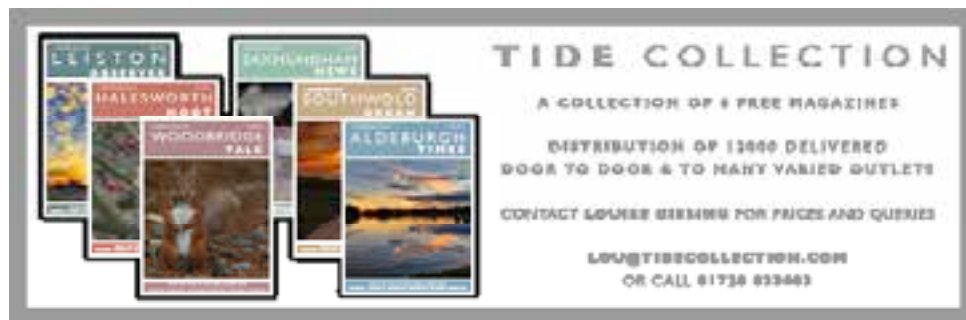
Please get in touch if you have anything to share with our readers or if you have an event coming up why not consider increasing your footfall by placing an advert in the Tide Collection? We know from the feedback we receive that people really engage with

our publications and seek them out. I would love to hear from you, email me at: lou@tidecollection.com

QUOTE OF THE MONTH

If you keep your feathers well-oiled the water of criticism will run off as from a duck's back.

Ellen Swallow Richards



INSIDE YOUR MAGAZINE...

ALE DAY A BIG SUCCESS! 7

- Halesworth's Ale Day's many events a hit with locals & visitors

AN OPEN LETTER FROM NERI HARRIS 9

- The Playground that vanished

V-M ORTHOTICS LTD 11

- Marking their 40th anniversary with '40 Good Things' for the community

HALESWORTH TO SOUTHWOLD NARROW GAUGE RAILWAY 19

- Now part of the 'Railway 200' celebrations this year.

CITIZENS ADVICE EAST 21

- Eligible for PIP or UC?

SAXMUNDHAM OPEN - JOIN US TODAY!

DANCE WITH US AT SAS!

For more information, contact Louise Gissing, Editor, Tide Collection, 10, The Old Rectory, Saxmundham, Suffolk, IP19 1JH. Tel: 01738 833463. Email: lou@tidecollection.com

www.tidecollection.com

The Ark, Southwold

suffolk hideaways
coastal and country holiday retreats

THINKING OF LETTING YOUR HOLIDAY PROPERTY?

We'll make it easy for you

We know that choosing an agency to let your property can be a big decision. From promoting your property to managing bookings and maintenance, we're here to help to make sure the whole process is stress free.

Competitive commission rate | Excellent occupancy levels
A Marketing or Marketing and Managed service | Professional photography
Peace-of-mind damage cover | No restrictions on the use of your property

So, if you're ready to start sharing your property and earning some extra income, why not get in touch for a chat or ask for a free copy of our Property Letting Guide?

01728 666 300 | suffolkhideaways.co.uk
Office in Alderburgh

THE RETURN OF AKENFIELD

Leading Costume Maker Constance Mackenzie to join the creative team on the AKENFIELD stage production.

SHAKE is delighted to announce that the international costume maker, Constance Mackenzie has joined the creative team for the new stage production of Akenfield.

Best known as the senior costumer maker on Wolf Hall: The Mirror and the Light, and as a daily costume maker on Downton Abbey 2, Constance was inspired to learn her craft as a teenager on reenactments at Kentwell Hall in West Suffolk.

"I fell in love with making period costumes at Kentwell Hall, when I was very young, so I'm excited to be making costumes for the first stage production of Ronald Blythe's iconic book about Suffolk," said Mackenzie from her studio near Rickinghall.

"In Akenfield, the villagers' memories stretch from the first world war up to the late 1960s, so it's an exciting challenge for a costumer maker."

Mackenzie worked her way up as a freelancer collaborating on many films for Disney, the BBC, Warner Bros and Sky, before becoming Senior Maker on large TV projects such as Lord of the Rings, The Rings of Power.

Months working at the Globe Theatre in London, the Mercury Theatre in Colchester, and making costumes for principals and chorus at Glyndebourne Touring Opera in Sussex have given Constance an enviable expertise in her craft.

She now teaches when she has time, for instance at the Los Angeles Costume College, and she writes about specialist areas of historical costumes.

"My greatest passion is 16th C ruffs. If there's such a thing as a Ruff-Geek, that must be me!" she says with a grin.

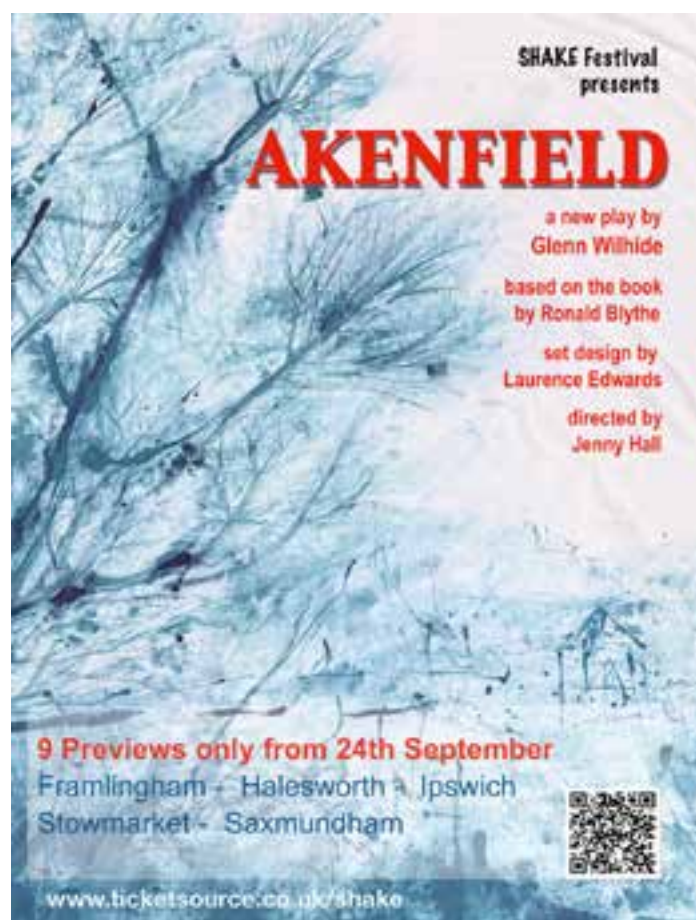
The new play of Akenfield has been adapted by Glenn Wilhide from Ronald Blythe's iconic Akenfield; Portrait of an English Village.

Taking its lead from the 1975 film which was performed by non-professional local people, the stage play of Akenfield is being cast from within the Suffolk community.

"Casting is nearly complete!" says director Jenny Hall. *"We're still searching for the lead actor, but we're assembling a wonderful cast!"*

Produced by Hall and Liz Cook via the Benhall-based theatre company SHAKE Festival, the new play will initially be performed as 9 previews in Framlingham, Halesworth, Ipswich, Stowmarket and Saxmundham. Tickets for Ipswich performances will be available via Eastern Angles. All other Tickets are on sale at www.ticketsource.co.uk/shake

YouTube and IG: @StanceyMackenzie
SHAKE Festival CIC



Halesworth in Bloom Open Gardens

Saturday 30th August, 11 am – 4 pm

Invitation to view 7 spectacularly different gardens



From water-side walled gardens to pretty modern courtyard gardens, we're sure you'll come away inspired. With thanks from Halesworth in Bloom to those generously opening their garden gates.

No entry charges – donations welcome on the day. Get your free garden guide map from the Library from Friday, 29th August.

BUNGAY FOLK FESTIVAL

The second Bungay Folk Festival, over the weekend of September 5 - 7, will feature 35 different acts, the most well known of which is Eliza McCarthy, one of the most recognisable faces in British folk, who is booked for two concerts at the Fisher Theatre.

The Indian-influenced folk collective Mishra are booked along with The King Driscolls, Orchestra of Samples, The John Ward Trio, Christina Alden and Alex Patterson.

Some of the 35 booked acts have already been active in the area: Rumburgh Morris were around at dawn for the May Day celebrations on Broome Heath, later that week, amidst the ancient barrows at the Annis Hill Community Woodland, Paul Gill led the crowd with May Day songs and traditional English tunes. Whirligig, who will close the festival on Sunday, September 7, appeared at St James South Elmham, and on May 30 there was a concert at Bungay's Three Tuns promoting the festival with Gavin, Fairhall and Lever.

On July 17, BFF2025 teamed up with their friends at Black Shuck to provide the lunchtime concert courtesy of Artistic Fields in St Mary's Church.

Thanks to funding from Bungay Town Council, BEBA, East Suffolk Council and Suffolk County Council, Blake Harrison will be bringing his African drums to the festival and offering a free drum workshop to both adults and youngsters.

Norwich-based singer, Mary Lovett will lead a free singing workshop and Mog and his renegade Irish drums will make a second appearance with four workshops.

In addition, the festival organisers are determined to present free live folk music in all the town's venues including St Mary's Church, Trinity Church, The Bell Gallery, The Three Tuns and Bungay Castle Bailey.

Meanwhile at the Green Dragon and Three Tuns pubs the folk tune and sing-around sessions are continuing every month on the second and third Monday evenings from 7 - 10. Why not come along and join in or just come and listen?



HALESWORTH BRANCH OF CANCER RESEARCH

After our Spring Fair in May, June is a rather quieter month for us but we did hold our annual street collection on Friday 27th in the town and Saturday 28th at the Co-op. We are very grateful to the Co-op for allowing us to collect in their shop. Thank you very much to everyone who stopped to speak to our collectors and popped something in our collecting goblets.

Also in June we were invited to send two representatives to The John Leman High School on Tuesday 24th when they held their 'Leman 4 Life' event. This has been an annual event at the school where the pupils obtain sponsorship and run a 5km circuit. The event was always a collaboration between the school and the Beccles group of Cancer Research. Sadly, the Beccles group has disbanded but two of the ladies from the group, Jackie and Amanda and Mrs Remer, a teacher at the school were determined to keep the event going. It was a huge success and Gail and Christine who represented us had a lovely afternoon and were very impressed by the enthusiasm and behaviour of the pupils as they helped to distribute fruit to the all the runners.

We will be in Beccles again on Friday 22nd August as QD stores have very kindly given us permission to hold a street collection outside their shop. We will be there from 9.30am -3.30pm.

By the time you read this we will have completed our week in the I-Chameleon pop up shop so I will let you know how we got on in next month's edition.

Our next big event is The 'Maize Maze by Torchlight' on Friday 29th August. We are so very grateful to Bella from The Old Hall Cafe for agreeing to hold this for us again this year. This is an event we all enjoy doing as it is such good fun. We will be having the really competitive 'welly wanging' and marbles in a flower-pot game along with other traditional games and the play park of course.

There will be a little prize for the adult and child overall winner for each game. We will also have a little Tombola and cake stall.

Food and drink available from the café. Doors open at 6.30 pm / Maze opens at 7.30pm. Proceeds to Halesworth Branch of Cancer Research.

Tickets can be bought online from The Old Hall Cafe Reydon/ Southwold. £9 per person (under 2s free). Tickets available from www.southwoldmaizemaze.co.uk or email: enquiries@oldhallsouthwold.co.uk. The Old Hall only take card payment. At the moment we are 'cash only' for our games and stalls so please put a little change in your pocket and have fun.

Thank you for continuing to support The Halesworth Branch of Cancer Research.

For more information please contact Dawn Davis: 01986 873640.



Sophia our area manager, Jackie and Amanda from Beccles and Gail and Christine from Halesworth Branch at the 'Leman 4 Life' event.

HALESWORTH DEMENTIA CARERS FUND

With the opening of the new Patrick Stead Day Centre in the old Methodist Church several developments are taking place with our activities, and we are able to extend the work we do for people with dementia and their carers. More information will be out soon, but our weekly programme of activities is now as follows.

Seated Movement to Music, Mondays at Holton Village Hall from 11am – 12noon.

Memory Café in the Co-op Community Room on Tuesdays from 2 - 3.30pm.

Singing With Friends at Holton Village Hall on Wednesdays from 2 - 3.30pm

Every Friday in the Patrick Stead Day Centre:

9.30am - 3.30pm: Day Care

10 - 11.30am: Creative Art

2 - 3.30pm: Carers' Support Group.

If you would like any information about these groups please call 07990 199632 or email info@halesworthdementiacare.co.uk. You can also visit our website

www.halesworthdementia.co.uk or follow us on our Facebook page.

On July 3rd Janet and Malcolm Heath held a wonderful Garden Party at Dormy House in Linstead, in aid of the Halesworth Dementia Carers' Fund. Support, help, food, donations etc were magnificent, all provided by Janet and her loyal band of helpers. Many members of our committee and the 100+ Club were there and enjoyed lovely weather and great company. A splendid sum of £800 was raised and will go towards our opening at the Patrick Stead Day Centre with Day Care and support for our ever-growing numbers. Very many thanks to Janet, Malcolm, and all their helpers.

ALE DAY A BIG SUCCESS!

The first ever Halesworth Ale Day took place on Saturday 14th June and what a roaring success it was! Locals and visitors alike enjoyed events all over town including guided walks of the Malt Trail and the Halesworth to Southwold Narrow Gauge Railway (HSNGR) restoration site, illustrated talks at the Cut Arts Centre (a former maltings), brewery talks and beer tasting by Adnams at the Stables at the Angel Hotel, brewing demonstrations by Tindall Brewery and a Beer Festival at The Tap Room. The Market place was home to family friendly activities such as outdoor games, facepainting, a gaming bus, science activities and children's arts and crafts. The entertainment was kicked off by the lively East Angles Brass, followed by the Halesworth based Blyth River Blues Band, the Rogue Shanty Chorus from Lowestoft and the Westhall String Waits. Woodbridge Dance Folkus Friends entertained everyone in the Market Place with the Halesworth Hoedown during the afternoon. The Halesworth Ale – expertly brewed by Tindall Brewery was a big hit with everyone, folks describing it as a delicious golden session ale. Congratulations to the artists at Mencap who designed the winning bottle and beer clip label. And thank you to all of the Ale sellers who kindly agreed to donate a % of their profits to local charities. Shall we do it all again next year?

Photos: Lindsay Want



PEARCE & KEMP

LIMITED

Tel: 01986 872130

enquiries@pearce-kemp.co.uk • www.pearce-kemp.co.uk

Unit 28, Halesworth Business Centre, Norwich Road, Halesworth IP21 8JH

DOMESTIC • COMMERCIAL • INDUSTRIAL • STREET LIGHTING

HEATING • LIGHTING • EXTRA SERVICES • SUBMERS

ECONOMY 7 HEATING • PORTABLE APPLIANCE TESTING

INSPECTING & TESTING • UNDER COOLING • EMERGENCY LIGHTING

FIRE ALARM INSTALLATIONS • FREE ESTIMATES

FRIED P. INSTALLERS

OVER 60 YEARS EXPERIENCE

Book with the **AWARD-WINNING** local Travel & Cruise **SPECIALISTS**

Fred. Olsen Travel Agents

Incorporating **Framlingham Travel**

HOLIDAY & CRUISE SHOW

FREE ★
PRIZE DRAW
AND SPECIAL OFFERS

**SUNDAY 28TH
SEPTEMBER**

FROM **10AM - 3PM**

ALDEBURGH JUBILEE HALL

Crabbe Street, Aldeburgh,
Suffolk, IP15 5BN

**SCAN
HERE TO
SECURE
YOUR
FREE
TICKETS!**



FEATURING...



STAR CLIPPERS



SCENIC
LONDON, BRISTOL & FISH

**Prestige
TRAVEL**



NATIONAL GEOGRAPHIC
EXPEDITIONS



CUNARD



Wendy Wu Tours

Fred.Holidays
Specialist in



**Fred Olsen
Cruise Lines**



COX & KINGS
ESTD 1759

EMERALD
CRUISES

**& MANY
MORE...**

Come along and join the
Fred. Olsen Travel Specialists
at our Holiday and Cruise Show at
ALDEBURGH JUBILEE HALL and
find your next adventure!

CALL, VISIT or SCAN the QR Code to secure your **FREE tickets...**

29 Market Hill Framlingham IP13 9AN

01728 724836

✉ framlingham@fredolsentravel.co.uk

fredolsentravelagents.co.uk



SCAN for our
latest offers,
upcoming events
and to sign up to
our newsletter...

Find us on **Facebook**

AN OPEN LETTER TO THE PUBLIC

The Playground That Vanished - and the Promise that didn't!

For over 50 years, children in northern Halesworth grew up with the Old Station Road playground on their doorstep. It was more than equipment - it was joy, community, legacy.



In late 2024, core play structures were quietly removed. No notice. No plan. No replacement.

The Council cited safety concerns and 'like-for-like' replacements were being quoted. By spring, the tune had changed and now it was 'still under review'.

By summer, it was just one site on a long list with no final decision until later in the year.

But here's the truth: the Council hasn't just promised this space once, it's named it in official documents across eight years.

- In 2017, Old Station Road was called the 'main northern play space' in Halesworth and recommended for investment.
- In 2019, homes were approved directly beside the site, heightening the need for local amenities.
- In 2021, Old Station Road named the main play area serving the north of Halesworth and recommended it to be upgraded to NEAP standards. Listed as high quality, with accessibility and community value far exceeding nearby alternatives.
- In 2023, Halesworth's Neighbourhood Plan formally backed upgrading the playground to NEAP standard based on consultation with local children.

To access the nearest alternative at Chichester Road, children must cross active train tracks at a pedestrian-level crossing. Though legally permitted and gated, it remains unsuitable for younger children walking independently, especially when the original site is safely nestled inside a residential area. Another alternative is a 15-minute walk away, across a busy main road. For young children, that's not an option, it's a risk. And for parents, it's another example of how community infrastructure too often disappears without the courtesy of conversation.

In terms of safety and proximity, Old Station Road is unmatched and yet it sits half-dismantled, without a plan.

The site sits adjacent to approved development land, believed to be earmarked for retirement housing.

While construction has not yet begun, the removal of equipment preemptively reduces local infrastructure without replacement or consultation.

This feels more like preparation than repair. And when asked about reinstatement, the response has been silence, delay, and shifting rationale. This isn't about one decision.

It's about what that decision says: that our children's spaces are negotiable, that legacy infrastructure can quietly vanish, and that when residents ask "why?" answers are optional.

The Council's own Play Area Strategy lists Old Station Road as a site under review. Its audit scores - quality, accessibility, community value - far exceed nearby alternatives.

Local families continue to visit, ask questions, and share stories. We're not asking for new promises.

We're asking for the old ones to be honoured and for the space our children deserve to be returned. Because play isn't extra. It's essential.

Both Old Station and Chichester play areas are now visible on Google Maps. Because memory deserves coordinates and advocacy deserves place.

Neri Harris



Norfolk & Suffolk Aviation Museum

Family Fun Day At The Museum

Saturday 9th Aug 2025 Open from 1000 to 1600

Come along and enjoy a great family day out at the Museum. With Mike Kendall and his Dancers in the main hangar, there is plenty to see and do. Enjoy some family time together with flight simulators to fly, open cockpits to sit in and with the NAAFI cafe open, this could be a relaxing day for all. We are wheelchair and dog friendly.

Museum has: 40+ Aircraft on display - 1,000s of Airfacts - Shop online
 Please bring: ++ Soft Drinks, Coffee, Tea & Snacks from the NAAFI Cafe

Admission - Adults £10, Children (aged 5 - 17) £5, under 5 free
 Family £20 (2 adults and up to 3 children)

Find us located at: The Street, Flixton, Bungay, NR35 3NZ
 Tel: 02380 896644 Email: nsam.flixton@gmail.com

Norfolk & Suffolk Aviation Museum

Veterans Day @ NASAM

Saturday 30th Aug 2025 Open from 1000 to 1600

Enjoy a great day out for the whole family. Lots to do and see, including open cockpits, flight simulators, NAAFI refreshments, weapons and uniforms. Enjoy the sounds and sights of the 40s with the Mike Kendall music and his dancers.

Also, subject to weather and operational commitments on the day, enjoy the sound and sight of a RAF BMBF Spitfire as it performs a flypast @ NASAM

Museum has: 40+ Aircraft on display - 1,000s of Airfacts - Shop online
 Please bring: ++ Soft Drinks, Coffee, Tea & Snacks from the NAAFI Cafe

Admission - Adults £10, Children (aged 5 - 17) £5, under 5 free
 Family £20 (2 adults and up to 3 children)

Find us located at: The Street, Flixton, Bungay, NR35 3NZ
 Tel: 02380 896644 Email: nsam.flixton@gmail.com



BRIGHT FUTURES START THIS SUMMER

Full Time Enrolment
starts 21 August*

Campuses in
Halesworth, Leiston,
Ipswich and Otley



Visit www.suffolk.ac.uk/enrol
for dates, times and more information

*Please view the website for
campus-specific times and dates.

V-M ORTHOTICS LTD CELEBRATES 40TH ANNIVERSARY

'40 Good Things'

V-M Orthotics Ltd, a long-established Suffolk-based business and the UK hub for DARCO foot and ankle medical products, is celebrating its 40th anniversary this year with a meaningful community initiative - '40 Good Things'.

Founded by Jon Vander-Molen in 1985 and acquired by global brand DARCO in 2018, V-M Orthotics Ltd has been a proud part of the local community for four decades. In recognition of this milestone, the company has pledged to complete acts of community kindness throughout the year, supporting local charities, schools, and environmental causes.

The first of these 'Good Things' took place in April, when the team donated 40 food items to the Halesworth Volunteers Charity Larder, a vital local resource supporting families and individuals in need. Staff from V-M Orthotics Ltd were warmly welcomed by Director Emma Healey and her team, who shared the importance of their work in the community.

More recently, the company partnered with Halesworth Bookshop to donate £100 worth of books to four local primary schools: Bramfield, Ilketshall St Lawrence, Holton, and Edgar Sewter. *"It was amazing to see the children light up when they received their chosen books,"* said Kirsten Howe, Marketing Officer at V-M Orthotics Ltd. *"The teachers were also incredibly grateful - it's a small gesture that we hope will have a lasting impact on students in local primary schools."*

'40 Good Things' is a heartfelt tribute to the company's mission: to support as many people as possible in living active, independent, and high-quality lives. With more community-focused activities planned, including environmental efforts and additional charity partnerships, V-M Orthotics Ltd is committed to making a positive difference, one good thing at a time.

Follow their journey on social media to see the latest updates as the team continues their 40th anniversary celebrations through kindness and local engagement or find out more about the company and products at www.vmorthotics.co.uk.





**YOUR LOCAL
BUILDING AND
LANDSCAPING
CONTRACTOR**

For all your **home improvements**



We specialise in building replacement protection, including rendering, stone, and concrete repairs, waterproofing walls, and stone pointing. Our expert team offers lasting solutions for residential and commercial premises.

- Specialising in external render and stone pointing systems
- Stone and brick repairs, cleaning and re-pointing
- Roof repairs ■ External painting ■ Fences and gutters
- Windows and doors ■ Insurance-backed guarantees
- K-Rend approved contractor ■ Chiff approved contractor



*Speak to the
professionals today!*

TRANSFORM YOUR OUTDOOR GARDEN SPACE

As experienced, professional landscapers, we specialise in hard landscaping and soft landscaping for domestic and commercial projects, as well as design concepts and garden structure installation.

- Fencing and gates ■ Decking ■ Concrete paths ■ Landscaping
- Driveways ■ Drain board drains ■ Patios ■ Drainage
- Garden clearance ■ Ponds ■ AND LOTS MORE!

GET IN TOUCH TODAY FOR ALL YOUR LANDSCAPING ADVICE

Can't visit? No problem! We're here to help! Reach out to us with any questions, ideas, or requests you may have. Our team of experts is ready to assist you every step of the way.

☎ 01986 872122

✉ climbengay@gmail.com

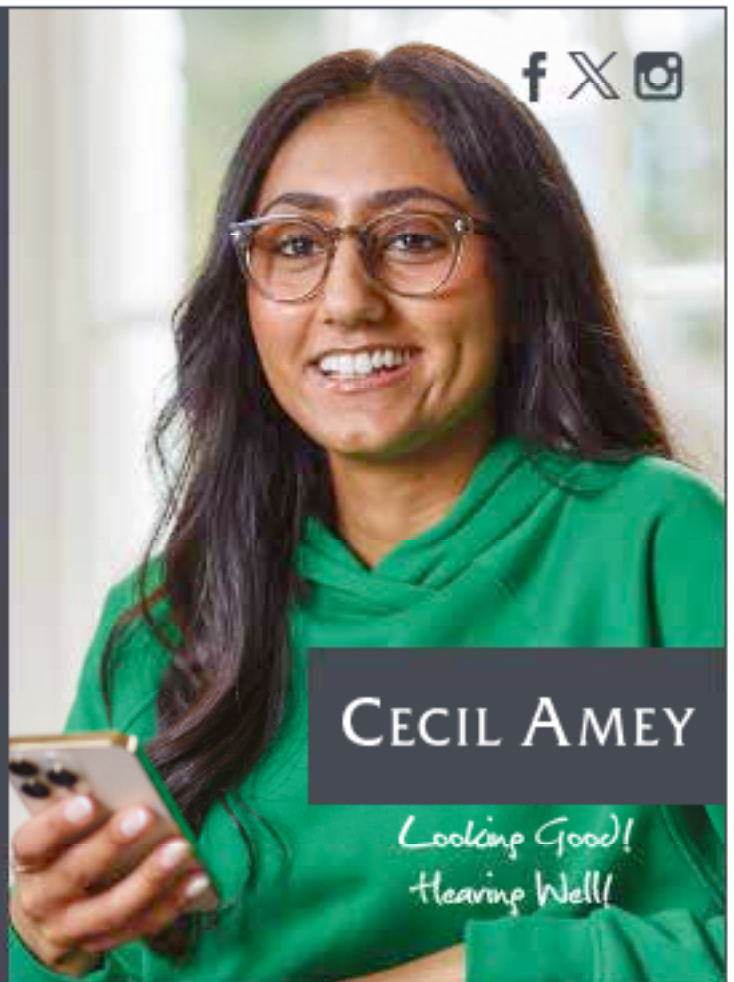
📍 22 The Square St, Halesworth, NR28 1AD

CECILAMEY.CO.UK

Cecil Amey
Over 100 years of
Exceptional Care

OPTICIANS & HEARING CARE

**9-10 BRIDGE STREET
HALESWORTH
01986 872122**



CECIL AMEY

*Looking Good!
Hearing Well!*

HUBFEST MUSIC FESTIVAL

23rd August. Huntingfield Millenium Green.

HUBFEST is the name we have given to the launch of our first ever Music Festival due to take place in Huntingfield on the Millennium Green. It has been given this name as all the proceeds will go to the upkeep of the village HUB. The village HUB is a new and well designed building and functions as a village hall serving three villages, Huntingfield, Ubbeston and Heveningham. It relies on fund raising events for the upkeep and is an important resource for these villages.

The Music Festival will take place on the 23rd August on the Millenium Green. It will commence at 2pm and is due to finish at 10pm. We have an exciting line up of some of the best of Suffolk and Norfolk's musical and dance talent. We will be opening the show with **Matt and Jon** an acoustic duo, followed by **Differential**, a talented singer/ song writer who is able to join us from his busy schedule touring around the country. The **Halesworth Ukulele band** will be following with their eclectic mix of sea shanties, rock and country songs. **The Back Woods Band** follow with a mix of blues and folk. We will then see a performance from the **Rumburgh Morris Dancers** before a set from the ever-popular **Blyth River Blues Band**, with a mix of some thumping rocking classic blues songs. **Black Deek** will finally headline the festival, with a mix of blues, country and folk songs.

There will be a bar with some of the finest real ales and a variety of stalls. We will also have various food stalls, including pizza, cajun street food and a barbecue. Tickets can be purchased at the gate to this event for £10 or in advance from the Huntingfield Arms for £8. The advance offer is for the first 100 tickets sold.



HALESWORTH HARMONY

Halesworth Harmony is a friendly and supportive choir, welcoming all singers without an audition. We sing a varied mix of world music in three or four-part harmony, and we are also fortunate to have worked with, and commissioned, contemporary British composers. The choir meets approximately fortnightly on Sunday mornings (10.30 - 12.30) between September and June/ July, usually at The Cut Arts Centre in Halesworth. There's an interval to chat and make new friends.

If you're interested in finding out more, do come along to a rehearsal. You'll receive a warm welcome and *YOUR FIRST SESSION IS FREE*. There's no need to be able to read music – songs are taught by ear and recordings are available for home practice. Our new choir year starts in September. For further information on dates and venues please email: halesworth.harmony@gmail.com



UPGRADE SIGNALS WENHASTON HALL'S HALF CENTURY

Wenhaston residents are to celebrate the village hall's 50th anniversary on October 4th 2025.

Major upgrades to toilets in recent months have been carried out and this is being followed by total refurbishment of the kitchen and café which will improve efficiency and attraction to users. It is hoped to complete the work by the summer of 2026.

Replacing a wooden hut in 1975, the village hall is pivotal in providing a social centre where Saturday coffee mornings, monthly craft markets and community lunches and teas are held.

Indoor badminton and table-tennis sports are also major attractions, as well as regular bingo and film evenings.

Operational funding is generated by the hire, not only to local activity groups but to other event organisers such as wedding or birthday celebrations.

Wenhaston village hall was registered as a charity in 1991 and is run by a volunteer management committee which is already planning fund-raising events to meet the high cost involved.

Donations will be gratefully accepted.

Contact: Mrs Carol Hudson-Jary, Vice-chair, Wenhaston Village Hall Committee
Tel: 07864 083296



Southwold & Aldeburgh Summer Theatre Season 2025

Southwold & Aldeburgh
Summer Theatre
2025

See How They Run!

Aldeburgh - 21st to 26th July

Southwold - 30th July to 9th August

Ultimate madcap farce by Philip King

GASLIGHT

Aldeburgh - 28th July to 9th August

Southwold - 13th to 16th August

By Patrick Hamilton. The original Psychological Thriller

Things We Do For Love

Aldeburgh - 11th to 16th August

Southwold - 20th to 30th August

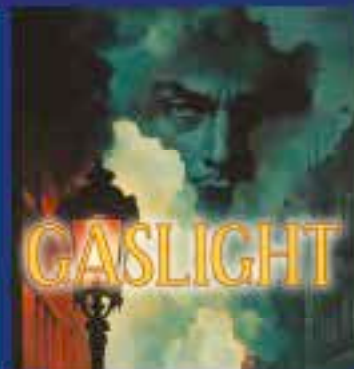
Comic, cruel, classic by Alan Ayckbourn.

While The Sun Shines

Aldeburgh - 19th to 30th August

Southwold - 3rd to 6th September

Hit West End WWII Romcom by Terence Rattigan



Tickets £16 or £22. Evenings 7:30pm. Matinees 4pm (Thurs & Sat)
BOOK NOW Call 01728 343344 (no fees)
or www.ticketsource.co.uk/southwoldandaldeburghtheatre (fees apply)



WORDS FROM THE HEDGE

– RICHARD NEGUS

The hedge is parochial, unique to the terroir of the condensed and quirky land on which they grow. There is no literal translation of the French word terroir. Terroir means much more than soil, air or landscape. Terroir is the taint of a place, the essence it imbues on man, animal, plant and tree. The eclecticism of terroir in the English countryside is exemplified by its multifaceted hedgerow network. It is, I suppose, possible to be an expert on hedges, but only in a theoretical context. To claim wholesale practical expertise of all English hedgerows is inconceivable.

My book, *'Words from the Hedge'*, focuses on the farmland hedgerows of East Anglia, particularly Suffolk. This is where I was born, live and work as a professional hedgelayer. Each season my business partner and I lay, on average, a shade under five kilometres of hedgerows. Add to that our planting, coppicing and the three to four hundred kilometres of hedgerows we analyse and assess each year for our hedgerow management plans and I like to think I know the hedges of the east as well as anybody can. Yet I still shy away from the word 'expert'. The hedgerows of Suffolk are a mixed bag. A new hedge, filled with hawthorn, maple, hazel and guelder rose near my own home amid the High Suffolk clay, becomes a meaningful haven for wildlife in under a decade.

Plant the same combination in gritty Breckland, a mere fifteen miles away, and it may take a full century to reach maturity. The Sandlings, like the Brecks, is heathland, yet for all that a different beast.

Once this slightly acidic, sandy soil was sheep country; now, like Breckland, it is for the main ploughed, de-stoned and irrigated; veg grows here along with vast fields of herbs and maize.

The hedges of the Sandlings are a hotch potch, mostly bare in the bottom, the soil whipped away by winter's easterlies. There are belts of Scots pine, bracken and clumps of gorse that sit like a musky crown on the highs; Dartford warbler, goldfinch and linnet grip onto the savage spikes.



Richard Negus

In the hedgerows, buckthorn, spindle and guelder rose take a second-string role to the more dominant blackthorn. You'll find hawthorn too, but it sulks. Regardless of species: every leaf is coated with a fine dust, as are the roads, houses, tractors and cars, Sandlings indeed.

To fully glean the needs and foibles of English hedgerows it is essential for hedgers to be unashamedly parochial; you must be 'of' your terroir. Equally a hedger must love the hedge with a pragmatic intimacy, so too the wildlife that calls them home. Few other jobs in the countryside allow you to take a pause from your toil, stand quietly and simply watch the world about you. Hedging brings you so close to wildlife you cease to merely be an observer. The naturalist observes nature; as a hedger, you are nature.

Richard will be appearing at the Adnams Café, Southwold, courtyard on **Thursday 7th August at 6.30pm**, for an informal talk about his work and book *'Words from the Hedge'*. Free entry.

On **Friday 5th September at 7pm**, he is the guest speaker at the Old Hall Supper Club, at Old Hall Southwold. Tickets £30, including a hearty 2 course 'hedgelayer's supper' inspired by the landscape and season. To book, call 01502 723091 or email enquiries@oldhallsouthwold.co.uk

Dunwich With a Twist!

Saturday 9th August from 2.30 — 4.30pm



The Dunwich Drifters Folk Band including Dunwich Songs & Dunwich Voices

Enjoy a glass of elderflower apple or mint with a twist! suggested £10 donation —Entry behind the Museum

There will be chairs or bring picnic rugs and cushions on the field behind the museum

College on the Coast

Sizewell C
The power of good for Britain

A NEW LEISTON EDUCATION CAMPUS

In July we held an event at Leiston and Saxmundham United Church to talk about College on the Coast, the new Further Education facility which is being built by Sizewell C in partnership with Suffolk New College.



You can learn more about the project and the opportunities it will bring at sizewellc.com or by visiting the **Sizewell C Information Office, 48-50 High Street, Leiston IP16 4EW**. We are planning to submit a planning application in September and will hold a further consultation then.

DATES FOR YOUR DIARY

AUG 9 Family Crafts at RSPB Minmere. Nature themed crafts including paper flowers and cards, drawing, painting and using natural materials. The craft activities are free but normal entrance fees apply to the rest of the reserve. Please check in at the Visitor Centre on arrival. RSPB Minmere, Sheepwash Lane, IP17 3BY. Visit: rspb.org.uk

AUG 16 Ceilidh Dance Night with Skylarking Ceilidh Band. Open from 7pm, dancing starts at 7.30pm at Wenhaston Village Hall. Tickets, incl. nibbles: £12 Adults, £6 children over 12 in advance from Jane Peters at Wenhaston Post Office or on the door. Contact Carol: caz-mike@outlook.com for info. We are raising funds for Wenhaston Village Hall's new kitchen.

AUG 16 Kinda Forest Family Saturdays. Join us at Kinda Forest School in Holton for a day of adventure, laughter, and connection in the heart of nature. We can't wait to welcome people of all ages. Kaliwoods, Holton, Halesworth, IP19 8NQ. For more information visit: www.kindaforestschool.com or email: info@kindaeducation.org.

AUG 18 – 30 Art exhibition: 'Paz y Amor 25' ('Peace and Love'). Waveney Valley artists Paul and Ally Zawadzki return to the Bell Gallery, Bungay for their second joint exhibition featuring colourful new work celebrating the unpredictability of nature and looking beneath the surface of the landscape that surrounds us. 10am – 4.30pm every day with a Private View on Tuesday 19th August from 5pm.

AUG 29 Maze by Torchlight at Southwold Maize Maze. Find the pink pebbles for prizes. Play park, games, tombola, cake stall. Food and drink available from the café. £9 per person (under 2s free). Tickets available from www.southwoldmaizemaze.co.uk. Doors open at 6.30 pm / Maze opens at 7.30pm. Proceeds to Halesworth Branch of Cancer Research.

AUG 30 The Wollaston Consort at Sibton Church (IP17 2NB) Julie Harmer (flute) and Peter Clayton (harpsichord & organ). Music from across Europe in the Baroque style. An afternoon of sparkling music by Blavet, Quantz, Buxtehude and Sweelinck. 3.30pm. As always, you are welcome to stay for tea, served at 4.30 following the performance. Tickets: Adults £15, U18s £5. On sale at the door, or from July 15th onwards at the Weavers Tearoom Peasenhall, and the Peasenhall General Stores and on Eventbrite. There is ample free parking on the church's car park at IP17 2LX.

AUG 30 Wenhaston Produce and Craft Market. Handmade cards, jewellery, homemade jams, chutneys etc, handmade Handbags, Handmade knitted items, the famous Dexter Beef, the local author Ruth Leigh, lovely soaps, serums and more. Plus other plant and food produce. Tea, Coffee and Homemade savouries and cakes. New stallholders - come and join us! For further details contact Carol at: caz-mike@outlook.com. 10am to 12.30pm at Wenhaston village hall.

BRIAN FROM MELTON

Melton's famous resident, Brian, shares his stories, views and observations on everyday life with his very own column, exclusive to The Tide Collection magazines.

Cor-to-heck! It's been some duddy warm of late. I've been loods of time in the garden shade and trying to keep cool. Me plants hev bin droopin in the heat and the grass is slowly turning to straw, but the weeds keep agorn and are good and green! It won't be long afore them ol warsps start appearing again and I int looking forward to it one bit. Between them and them dutty ol flies, they're a ruddy nuisance and I hate em. A couple of summers ago, I sat in the garden, minding my own bizzness on a hot ol day, tucking into a corn beef sandwich with a dollop of browen sauce when a warsp



flew up my best linen shorts and stung me right on me groin. Blast I dint harf shriek out and it dint half hurt anaul. Thankfully, the gal Rosemary next door got me some ice to put over the sting and some vinegar to ease the pain and reduce the swelling. That was a rum ol dew, and I dint know that vinegar helped with warsp stings, but that do. The neighbour Marcus and his misses hev been spending more money on them solar garden lights. They got hundreds and wen you look over the fence, that look like Yarmouth luminations.

They even got lights on the patio, lights on the fence and either side of the garden path - it look like the runway at Stanstead! I spect I'll be gorn down to Aldeburgh Carnival in a few weeks and I usually like to sit up on the beach and watch the world go by and everyone getting chased by the seagulls. Some of them are groot-ol buds and will grab your sausage if they see it sticking out of the bag. I love watching the Carnival lantern parade at night and seeing the sky light up with all them fireworks, sitting on my fold up chair and listening to everyone gorn "ew" and "arr" as the fireworks go up and then pop. That take a lot of hard work to put the Carnival on and I say well dun to all them that do their bit to keep it gorn. I always hull a tenner in the firework bucket to show my appreciation and spect you do the same.

This year, I'm gorn down there with me mate Ticket on the bus. He reckon that's the easiest way, so I hope his right and we don't end up lorst up the back of beyond.

You can hear Brian from Melton chatting with Mark Murphy every Saturday morning at 8.20am on Alde and Blyth Community Radio and listen out for the new Brian from Melton podcast, coming soon to: www.abcradio.co.uk.

What's On at Leiston Film Theatre

Mon 4th & Tues 5th Aug at 7.15pm
Wed 6th Aug at 3.00pm
Thurs 7th Aug at 7.15pm

FOUR LETTERS OF LOVE 12A

Wed 6th Aug at 7.15pm

THE BALLAD OF WALLIS ISLAND 12A

Fri 8th & Sat 9th Aug at 7.15pm
Sun 10th Aug at 6.00pm

SUPERMAN 12A

Mon 11th - Thurs 14th Aug at 3.00pm

SMURFS U

Tues 12th & Thurs 14th Aug at 7.15pm

F1: THE MOVIE 12A

Wed 13th Aug at 7.15pm

SIX - THE MUSICAL LIVE! 12A

Fri 15th Aug at 7.30pm. LIVE ON STAGE

COUNTERFEIT QUO

Sat 16th Aug at 7.15pm
Sun 17th Aug at 6.00pm
Tues 19th - Thurs 21st Aug at 7.15pm

THE NAKED GUN 15

Sat 30th Aug at 7.00pm
Sun 31st Aug at 3.00pm

ANDRÉ RIEU'S 2025 MAASTRICHT CONCERT WALTZ THE NIGHT AWAY PG

Wed 3rd Sept at 7.15pm
Sun 7th Sept at 6.00pm

JAWS 50th ANNIVERSARY 12A

Sat 6th Sept at 7.30pm. LIVE ON STAGE

SONG SUNG BLUE NEIL DIAMOND TRIBUTE

From Fri 12th Sept - NOW BOOKING

DOWNTON ABBEY THE GRAND FINALE PG

High Street, Leiston, Suffolk. IP16 4BZ
Tel: 01728 830549, or visit:
www.leistonfilmtheatre.co.uk



ALLVAC SERVICE & REPAIR KIRBY & DYSON SPECIALIST

HAVE YOUR VACUUM CLEANER
COLLECTED FULLY SERVICED AND
RETURNED AT YOUR CONVENIENCE FOR

£35

ALL MAKES AND MODELS

PAUL LAYTON
01379 871090 OR 07800 549642

A1 Carpets 4U By Gary Burden

For the complete A1 Home Selection Service

Carpets, Vinyl & Luxury Vinyl Tiles
Professional, reliable and competitive
Save ££££'s - We will beat any genuine retailer quote!

Tel: 01728 604396 Mob: 07419 375720
www.a1carpets4u.co.uk

EXPERIENCED CLEANER REQUIRED

HOLINGTON

We are looking for an experienced cleaner to join the team
at our holiday resort in Thoringham. More shifts might
be available for other homes (if appropriate).

Monday/Friday 10am-3pm, 5 hours shift
- subject to bookings.

Freelance basis, you would need your own van.

Please email recruitment@holington.co.uk,
or call us 0203 488 1584



RSPB Minsmere Nature Reserve

Wildlife - Shop - Café - Events - Family Activities



rspb.org.uk/days-out/reserves/minsmere



HALESWORTH TO SOUTHWOLD NARROW GAUGE RAILWAY

The heritage railway charity is pleased to announce that we are now part of the 'Railway 200' celebrations this year.

200 years ago, the Stockton and Darlington Railway ran the UK's first official passenger trains, and our September event at Blythburgh will reflect that. Although we cannot provide passenger rides yet (rest assured that we are working on that!) our volunteers have restored Blythburgh's passenger platform, Signal Shed, platform sign, oil lamps, and even the 1880 holly hedge and its associated – and unique – fencing. We had hoped by now to have been able to provide a longer run, on our extension, but that is still held up by objections – as it has been for over six months now. It's disheartening for our very hard-working volunteers when misinformation (and outright lies) are told about us locally, in a situation where it is made very hard for us to respond.

However, nothing daunted, our activities continue as is possible. We have now negotiated an Agreement which will allow us to re-start work at Walberswick Station once the bird nesting season is over: we already have the replica station platform sign and are working on an information board as well.

Our Chairman Ken Penrose owns some very rare (and valuable) original Southwold Railway timetables, and he is organising some facsimile versions of the 1914 timetable and the 1879 Rule Book which we can sell at our events. The advertisements in the timetable booklet are particularly interesting – even after all this time a lot of the featured local firms are still with us!

The rules in the Rule Book are, as one might expect in 1879, pretty draconian – but that was normal for all railway companies at the time. We have also bought a small number of high-quality mugs. These celebrate the HSNR Society which started in 2018 with two members, and grew into our present charity with nearly three hundred. There will only ever be twenty of these special mugs – when they are gone they are gone! Come to our Open Day at Blythburgh Station on Sunday 14th September, and see what we have left. That day – as always with the charity featuring free entry and free refreshments – includes our annual model railway show and reflects the national and local Heritage Open Days. There will be bus connections from Halesworth and also a guided walk onto the Millennium, Green on Saturday 13th September.

The charity runs regular social events for volunteers and members: recently we organised guided tours of the Saxon Ship Company's shipbuilding shed at Woodbridge, where original Saxon-style tools are being used to replicate the Sutton Hoo ship. We had a fascinating day and managed to take in the Tide Mill and Woodbridge Museum as well. We'd very much recommend a visit to this part-built Saxon ship, which is easily accessible if you use the East Suffolk Line, as we did. Other interesting social events are being planned. You could be part of them – all you have to do is to join us, for £10 per year, on www.halesworthtosouthwoldrailway.co.uk, or at any event.

James Hewett





NEW IN



Drive AeroCarbon -
Our lightest folding scooter ever!
3 year warranty
£2245



Drive Expedition Plus -
£2345
now £2295



48+ Super
£4,270
now £1,995

Cannon Lane North Broomfield, Suffolk IP154 8BL
Call 07486 571271
Open Monday, Wednesday & Saturday 9am - 5pm



ENVI SALON



SINCE 2025
07474 202313

www.envi-southwold.co.uk
info@envi-southwold.co.uk

 **@Envi_25**

Book via the Fresha app

Unit 3, Station Yard
Blyth Road, Southwold, IP18 6FH

Our Opening is on 6th August from 10am till 4pm.
All welcome



WHAT'S ON AT THE SAIL LOFT?

Summer 2025:

Welcome to the Sail Loft, here you'll find all the exciting things we will have going on this Spring/Summer

LIVE MUSIC: July 28th & August 18th

Introducing our new **Diners Loyalty Card**. Simply collect 8 stamps for every 2 courses you enjoy with us & receive a free meal on your next visit (T&Cs apply)

Steak Night*: Every Thursday evening. Pan seared minute steak, fries, dressed drocket with a brandy & peppercorn sauce £21.95 incl. house glass of wine or pint of lager

Food focus of the month: Come & join us each month where you'll find a different food focus as we go through each season

September 20th, 21st & 22nd: The Sail Loft's very own **Annual Beer & Burger Festival**, raising money for the RNLI with live music, exciting speciality burger selection, cask ales and cider at £4.50/pint.

Wine Evening: Thursday 18th October
(Wine supplied by Jeroboam Wines)

2 for £15 Menu*: Starts November 3rd. Enjoy 2 courses from our pre-set menu for just £15, available Monday-Friday, between 12pm-3pm

Quiz & Curry Night: Starting November 6th. £15pp, includes prize for winners!

Lunch Club: Starting November 6th
A different themed 2-course lunch with coffee, talk from our Chef about the dishes served and a full recipe card.

* NOT AVAILABLE DURING SCHOOL HOLIDAYS

FOOD FOCUS OF THE MONTH

June: East Coast Lobster
July: Summer BBQ

August: East Coast Fish
September: Mussels

01502 725713 • www.sailloftsouthwold.uk
53 Ferry Road, Southwold IP18 6HQ



AUGUST AT HALESWORTH LIBRARY

Halesworth Library has a full programme of events throughout August, to keep you busy! As a reminder the Summer Reading Quest is in full swing during August, so children are encouraged to visit us each week to receive their prize and weekly activity. The full programme of events can be seen below:

Friday 8th August: Mixed Media Art workshop led by Anita for ages 8+. Spaces are £1 and limited, please book with a member of staff (time tbc.)

Sunday 10th August, 10.30am – 12.30pm: Sociable Sundays group for older people. Suggested £1 donation.

Monday 11th August, 2 – 4.30pm: Board Games Cafe. Suggested £1 donation.

Tuesday 12th August, 11.30am - 12.30pm: Storytime and craft session with Sarah for all aged children. Free, drop-in.

Wednesday 13th August, 10 – 11.30am: Meraylah's Forest of Enchantment Oracle launch at the Time Out sociable group for older people. Drop-in, £1 suggested donation.

Friday 22nd August, 10am - 12:30pm & 1 – 2.30pm: Forensic Workshop for ages 6+. Spaces are £1 and limited, please book with a member of staff.

Sunday 24th August: Sociable Sundays group for older people. Suggested £1 donation.

Tuesday 26th August, 11.30am – 12.30pm: Storytime and craft session with Sarah for all aged children. Free, drop-in.

Saturday 30th August, 2 - 3pm & 3 - 4pm: End of Summer celebration with The Tricky Twister. Spaces are £1 and limited, please book with a member of staff.

Every Tuesday we will continue Rhyme Time & Play from 10 – 11.30am and East Suffolk Council Customer Service drop-in 10am - 4pm. With Citizens Advice attending Tuesday 12th & 26th August, 10am – 12noon. Knit & Natter group will be meeting Tuesday 5th & 19th August, 2 - 4pm. Additionally Barclays Bank will have their drop-in every Wednesday 9am - 5pm and Time Out Sociable group meet every Wednesday 10 – 11.30am.

CITIZENS ADVICE EAST

Eligible for PIP or UC? Apply before the rules change

There has been a great deal of talk recently about proposed changes to government disability and health benefits, specifically to Personal Independence Payment (PIP) and the health component of Universal Credit (UC). While some proposals were knocked down in June 2025, the government still has plans to improve the efficiency, fairness, and targeting of these benefits.

What are these benefits? When might they change?

Personal Independence Payment (PIP) is a government benefit for people with a long-term illness or disability. It is designed for people of working age to help with the extra costs associated with daily tasks (like dressing, cooking, washing, and managing medication) and/or with mobility (walking, moving about safely). PIP is not means-tested, which means you can apply whatever your income, savings, or employment status.

The government are planning changes to the rules for claiming PIP. We don't know exactly what these are yet (and will tell you when we do) but they won't come into effect until 2026. This means....if you think you may be eligible for PIP you should apply this year as fewer people will qualify when the rules change. First though, check your eligibility, and read how DWP assessors make their decisions (see helpful websites below). And if you find long application forms daunting, ask Citizens Advice for help.

Universal Credit, health element. Universal Credit (UC) is a means tested benefit for people of working age and their families who have low incomes and few savings. You can be employed, self-employed, or not working but you must meet the low income and savings criteria. The **health component of Universal Credit** gives people with disabilities or long-term health conditions additional money.

The amount is tailored to the severity of the condition. Claimants have a 'Work Capability Assessment' (WCA) determining whether they must look for work/more work or not, and how much they get.

The government are planning changes to the amount of Universal Credit people can receive, and how the health element of UC is assessed. It is likely that the **rules for the WCA** will be tightened. However, changes will not happen before April 2026. This means....if you don't get any benefits and you're on a low income with few savings you should make a claim for UC soon. You might get more money if you apply before the rules change. Again, Citizens Advice can help you claim. Have a look at these useful websites before making a new application for PIP or UC:

PIP: <https://www.citizensadvice.org.uk/benefits/sick-or-disabled-people-and-carers/pip/>

<https://www.citizensadvice.org.uk/benefits/sick-or-disabled-people-and-carers/pip/help-with-your-claim/how-decisions-are-made/>

UC: <https://www.citizensadvice.org.uk/benefits/universal-credit/claiming/start-a-universal-credit-claim/>

<https://www.citizensadvice.org.uk/benefits/universal-credit/if-youre-sick-or-disabled/getting-universal-credit-if-youre-sick-or-disabled/>

For further advice on this or any other issue please email Citizens Advice East Suffolk from our website:

www.caes.org.uk/email-service or phone us on 0808 278 7866 (lines open 10-2 Mon-Fri). Our website www.caes.org.uk also gives details of our drop-in outreach sessions and how to make an appointment at one of our offices.

LEISTON BOOK FESTIVAL

The 2025 Leiston Book Festival will take place on Saturday 20 September, building on the success of the inaugural festival in 2024. As before, the venue will be the splendid Leiston Film Theatre. And again, the festival will be devoted to writing about nature and the environment, making it unique among literary festivals. Each of the six authors on the programme writes from a different perspective about our changing landscape. Together they form a day-long event that will inform, inspire and perhaps encourage you to see the world a little differently.

Festival line-up

Patrick Barkham, *The Swimmer: the wild life of Roger Deakin*. Patrick is natural history writer for the Guardian and is one of a generation of authors who have revitalized nature-writing in Britain. His books include *'The Butterfly Isles'*, *'Coastlines'* and *'Badgerlands'*. His work has been short-listed for the Ondaatje Prize and the Wainwright Prize. His new book is a creative biography of the late Roger Deakin, writer, film-maker and environmentalist. The story is told primarily in the words of the subject himself, with support from a chorus of friends, family, colleagues, lovers and neighbours.

Richard Negus, *Words from the Hedge: a hedge-layer's view of the countryside*. Richard is passionate about the human skill and effort that go into the creation and nurturing of hedgerows, emblems of the British countryside that are often taken for granted. Well-known for his *'Letter from the Country'* on BBC Radio Suffolk, in this book he brings to life the biodiversity that hedgerows foster and introduces the men and women who deal with the everyday complexities of modern farming, conservation and countryside stewardship.

Melissa Harrison, *Homecoming: a guided journal to bring you back to nature*.

Melissa's novel *At Hawthorn Time* was longlisted for the Bailey's Women's Prize for Fiction. *All Among the Barley*, set in East Anglia in 1933, offers what the Guardian described as *"an in-the-bone connection with the natural world"*. Melissa's book *'The Stubborn Light of Things'* is based on the monthly nature notebook she contributes to The Times. This, her latest book has been described as *"a simple, friendly and – above all – accessible nature journal for anyone who wants to observe more of the world around them"*.

Patrick Galbraith, *Uncommon Ground: rethinking our relationship with the countryside*.

Patrick appeared at the book festival in 2024 discussing his book *'In Search of One Last Song'*, about Britain's disappearing birds and the people trying to save them. It is regarded as one of the most important books on the countryside of recent years. The *Sunday Times* calls *Uncommon Ground* *"a curious-minded and subtle intervention in the politics of the countryside"*. Patrick writes for the *Observer*, the *Spectator*, *The Times* and the *Daily Telegraph*. He is a columnist for *Country Life* and *The Critic* and runs the literary magazine *Boundless*.

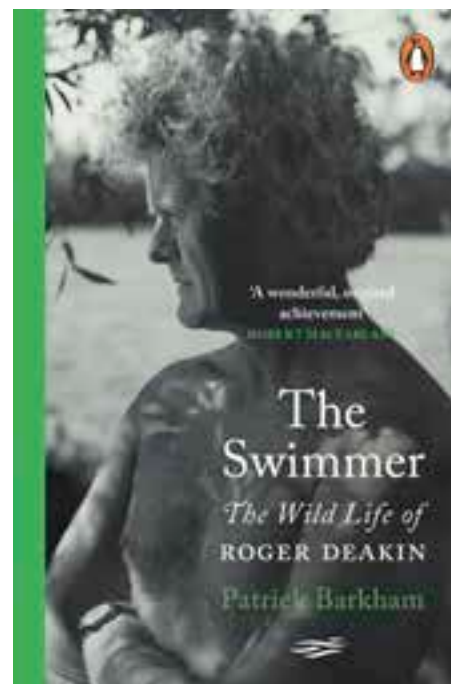
Tom Heap, *Land Smart: how to give people and nature the space to thrive*.

Tom is well-known as a presenter on BBC's *Countryfile*, Radio 4's *Rare Earth* and *The Climate Show* on Sky News. In *Land Smart* he journeys through the British countryside, speaking with farmers, researchers, conservationists and even logistics experts who are developing innovative approaches to land use. Their work offers hope for a future where both people and the planet can flourish.

Ian Collins, *Blythe Spirit: the remarkable life of Ronald Blythe*.

At the memorial service for Ronald Blythe, who died in January 2023 at the age of 100, it was said he ensured that the enduring beauty of Suffolk and the tenacity of its people were immortalized through his prose. Drawing on unparalleled access to letters, notebooks, published works, drafts and conversations over many decades, his close friend Ian Collins tells the full story of Ronald Blythe's life for the first time. The result is a sensitive, revelatory portrait which celebrates a fascinating, complex man and casts new light on one of our greatest writers.

The Leiston Book Festival brings together inspiring writers and enthusiastic readers for a day of exploration, debate and discovery. Tickets are only £30 and include full day access to all six author sessions. For more information and to book tickets, visit www.leistonbookfestival.co.uk



This issue was designed, printed & published by Leiston Press.

Halesworth Hoot is your free local paper, 2000 copies are printed every month.

We distribute the magazines door to door and to many varied outlets. The next issue will be published on Monday 1st September, copy deadline is 14th August - but the earlier the better to ensure inclusion.

Contacts/Advertisers/Editorial: Louise Gissing at Leiston Press, Unit 1b Masterlord Industrial Estate, Station Road, Leiston, IP16 4JD

lou@tidecollection.com Tel 01728 833003

Reports, press releases; letters and other editorial contributions with news value are all welcome but are accepted on the understanding that there is no guarantee of inclusion and that they will be selected and edited at the editor's discretion.




Open Air Theatre

The Pantaloon are bringing their signature blend of humour and energy to our pub gardens with performances of Shakespeare's greatest tragedy, *Hamlet*.

The Ship - Wednesday 13th August
The Westleton Crown - Wednesday 30th September

Outdoor Dining

Pull up a chair in our garden and make the most of the sunshine. Grace your way through seasonal plates and bar snacks, or stay a little longer for sundowners during golden hour. Outdoor tables are now bookable via our website.

For information on upcoming events, menus and more, head over to our websites below

shipatdunwich.co.uk westletoncrown.co.uk



Nathan Hunt



Tree Services

Fully qualified and insured arborist and Professional Tree Inspector

All aspects of tree work covered
Tree Surveys • Arboricultural Reports
Crown reductions • Land Clearance
Tree Planting • Stump Removal
Felling • Firewood

Call Nathan on
07900 734124
Nathan.khan15@gmail.com

LEISTON PRESS

PRINTING | SIGNAGE | PUBLISHING

01728 833003 leistonpress.com
lee@leistonpress.com

A FAMILY RUN BUSINESS
WITH A WEALTH OF
SIGNAGE KNOWLEDGE

Who knew there were so many different sign and display options for your business?

At Leiston Press, we specialise in signage, from design to print, and provide them all for you!

Getting your business noticed and standing out from the crowd is essential in the marketplace, and signs and displays can help you achieve this.








NATIONWIDE DELIVERY


FAST RESPONSIVE QUOTES


PART OF A CARBON CAPTURE SCHEME


SAME DAY TURNAROUND AVAILABLE

Hello Halesworth





We are your local community radio station, broadcasting online to bring you a varied mix of music programmes, stories and information about what's on in our area.

Have you discovered us yet?


Listen online at: www.abcradio.co.uk

via the app and on Alexa


PROJECT UPDATE

AUGUST 2025

Work across all Sizewell C sites continues to progress at pace.

Last month, Sizewell C announced plans to build a new post-16 college for its host town in Suffolk – a move that could transform higher education access in the area and ensure a long-term skills legacy for the region. The Further Education (FE) college will be delivered in partnership with Suffolk New College and will be an extension of their current local provision, known as 'On the Coast'. It will be a permanent high-quality post-16 education facility for Leiston, which will deliver comprehensive, multi-site education and training. Further details regarding location and planning requirements will be outlined shortly. For further information visit sizewellc.com/news.

Construction of the northern section of the temporary sea defence has started with the first sheet piles being installed. The works will take place within the Sizewell C fence line and the public footpath will remain open. We apologise for any noise disturbance which we will endeavour to keep to a minimum. Works will soon commence on installing a temporary outfall on the beach. This work will be for a short duration and within a fenced compound.

Site preparation, including construction compounds and welfare facilities, ecology and archaeology mitigations, continues at our Northern Park and Ride

In Darsham. Construction of the roundabout next to the A12 and Willow Marsh Lane has started. To aid road safety for all road users a 30 mph speed limit on the A12 is planned between the A144 and the Darsham level crossing.

Similarly in Wickham Market work will conclude this summer. As areas become clear of archaeology work, construction will begin in a phased manner.

From the week commencing 7th July, track works will start along the Leiston branch line. Work will include lifting and removing of old track and ballast. Once this phase is complete, there will new track and ballast laying.

The works will be carried out by engineering trains and specialist tracklaying plant including along the track, initially in the section to the west of Leiston. The work can be noisy and create dust, however we will have dust suppression in place to minimise the impact. Working hours will be from approximately 07:00 to 19:00.

Our forums are a way for local people to hear about key issues related to the construction of Sizewell C. All forums run from 18:30 to 20:30 (arrival from 18:00).

These monthly updates are now available on subscription. If you would like to further subscribe, please create an account on the Sizewell C works tracker website via the QR code below.

FORUM

SCHEDULE

All forum timings
18:30 - 20:30
(Arrival from 18:00)

Northern
Transport Forum

Wednesday
6 August 2025

Darsham Village Hall

Southern
Transport Forum

Wednesday
3 September 2025

Stratford St Andrew
Riverside Centre

Main Development
Site Forum

Wednesday
8 October 2025

Leiston Town
Athletic Association

For more information and for all 2025 forum dates visit sizewellc.com/community/forums

VISIT THE WORKS
TRACKER SITE



Sizewell C
The power of good for Britain

