

...YOUR FREE LOCAL NEWS

JULY 2025

# ALDEBURGH TIMES



PART OF THE **TIDE COLLECTION**

ALDEBURGH TIMES

WOODBIDGE TALK

SOUTHWOLD ORGAN

SAXMUNDHAM NEWS

LEISTON OBSERVER

HALESWORTH HOOT





[www.thoringtontheatre.co.uk/boxoffice](http://www.thoringtontheatre.co.uk/boxoffice)



# 07930 337182

**YOUR LOCAL SECURITY SPECIALISTS**



**At Crane Fire and Security we offer Intruder alarms,  
Fire alarms, Emergency lights, CCTV,  
Fire extinguishers and any Electrical work**

- Over 12 years in the industry
- New wireless intruder alarms to BS EN 50131 Grade 2 will come with an app for remote access and notifications
- Take over services from your current maintenance provider at no extra costs
- Intruder alarm routine maintenance visits starting at £70
- SSAIB accredited for all your insurance needs
- Also we offer any electrical work you require



**PROTECTING YOUR HOME & BUSINESS  
CALL FOR A FREE NO OBLIGATION SITE SURVEY & QUOTATION  
[WWW.CRANEFIREANDSECURITY.CO.UK](http://WWW.CRANEFIREANDSECURITY.CO.UK)**



*Markham Funeral Service*

**‘Our Family Devoted To Yours’**

Family Owned and Run Independent Funeral Directors

*Here for you and your family 24 hours a day  
365 days a year*

- Exceptional Standards of Service
- Top of the Range Facilities
- Affordable
- Providing Traditional and Non-Traditional Funeral Services
- Local Direct Cremation Service Offered
- Proud Members of the National Association of Funeral Directors
- Highly Experienced, Fully Qualified Funeral Directors



For further information call us on : 01728 747795

Or find us at:  
 The Old Cart Lodge, Bridge Farm, Ash Road, Woodbridge IP13 0AA  
 71 High Street, Leiston, IP16 4BX

Website: [www.markhamfuneralservice.co.uk](http://www.markhamfuneralservice.co.uk)  
 Email: [info@markhamfuneralservice.co.uk](mailto:info@markhamfuneralservice.co.uk)



## A NOTE FROM OUR EDITOR




We are very pleased to welcome a new regular columnist this month – Brían from Melton has decided to honour us with his words of wisdom on life as he sees it. Enjoy this legend's 'Suffolk' take on the world on page 21! If you are not familiar with Brían do look him up on YouTube, you won't be disappointed.

Please get in touch if you have anything to share with our readers or if you have an event coming up why not consider increasing your footfall by placing an advert in the Tide Collection? We know from the feedback we receive that people really engage with our publications and seek them out. I would love to hear from you, email me at: [lou@tidecollection.com](mailto:lou@tidecollection.com)

### QUOTE OF THE MONTH

What sunshine is to flowers, smiles are to humanity. These are but trifles, to be sure; but scattered along life's pathway, the good they do is inconceivable.

Joseph Addison



### TIDE COLLECTION

A COLLECTION OF 6 FREE MAGAZINES

DISTRIBUTION OF 12000 DELIVERED  
DOOR TO DOOR & TO MANY VARIED OUTLETS

CONTACT **LOUISE GISSING** FOR PRICES AND QUERIES

[LOU@TIDECOLLECTION.COM](mailto:LOU@TIDECOLLECTION.COM)  
OR CALL 01728 833003

## INSIDE YOUR MAGAZINE...

**WATER SAFETY** 5  
- *Excellent advice from Aldeburgh R N L I*

**THE COME & GROW GARDEN PROJECT** 7  
- *Come and learn gardening skills in friendly company!*

**ALDE VALLEY SUFFOLK FAMILY HISTORY GROUP** 11  
- *The Garrett Family, Transported Convicts & Members' Research*

**BETRAYAL IN BERLIN** 14  
- *A novel by Michael Shew, partly set in Aldeburgh*

**NEW CHAIR & PRESIDENT FOR BRITTEN PEARS ARTS** 17  
- *Angela Mallinson (Sullivan) succeeds Sir Simon Robey who becomes President alongside Lord Stevenson and Colin Matthews*



## WE LOOK FORWARD TO WELCOMING YOU TO THE OLD GENERATOR STATION

Here at the Old Generator Station we pride ourselves in being able to accommodate any function, whether it be a Wedding, Christening, Birthday Celebration or Wake we can provide a full package of catering for your every requirement.

We are always on hand to show you around and happy to sit and discuss any ideas you may have.

Our kitchen is open every weekend to serve bar meals

Friday 5-7pm  
Saturday 12-7pm  
Sunday 12-4pm.







**FOR MORE INFORMATION PLEASE CONTACT KERRY ON:**  
**TELEPHONE: 01728 453399 EMAIL: [INFO@OLDGENERATORSTATION.CO.UK](mailto:INFO@OLDGENERATORSTATION.CO.UK)**  
**WEB [WWW.OLDGENERATORSTATION.CO.UK](http://WWW.OLDGENERATORSTATION.CO.UK)**  
**OLD GENERATOR STATION, KINGS FIELD, ALDEBURGH, SUFFOLK, IP15 5HY**

The Pump House, Stoke By Nayland



coastal and country holiday retreats



## THINKING OF LETTING YOUR HOLIDAY PROPERTY?

We'll make it easy for you

We know that choosing an agency to let your property can be a big decision. From promoting your property to managing bookings and maintenance, we're here to help to make sure the whole process is stress free.

Competitive commission rate | Excellent occupancy levels  
 A Marketing or Marketing and Managed service | Professional photography  
 Peace-of-mind damage cover | No restrictions on the use of your property

So, if you're ready to start sharing your property and earning some extra income, why not get in touch for a chat or ask for a free copy of our Property Letting Guide?

01728 666 300 | [suffolkhideaways.co.uk](http://suffolkhideaways.co.uk)







Office in Aldeburgh



# Scan here to book your free hearing test

Book an appointment at [specsavers.co.uk](https://www.specsavers.co.uk)

Woodbridge 23 Thoroughfare Tel 01394 615 300

**Specsavers**

socialbar  
small-producer wines  
artisanal beer  
specialty coffee




Saxmundham 15 High St  
[www.visitsocialbar.com](http://www.visitsocialbar.com)  
instagram: [\\_socialbar\\_](https://www.instagram.com/_socialbar_)

## Nathan Hunt Tree Services



**Fully qualified and  
insured arborist and  
Professional Tree Inspector**

All aspects of tree work covered  
Tree Surveys • Arboricultural Reports  
Crown reductions • Land Clearance  
Tree Planting • Stump Removal  
Felling • Firewood

Call Nathan on

**07900 734124**

[Nathan.khan15@gmail.com](mailto:Nathan.khan15@gmail.com)

# ALDEBURGH R N L I - WATER SAFETY

If you are heading to a beach, or river – stay safe. Invest in a waterproof pouch to keep your mobile phone safe. Wear it on your person so it is within easy reach, and ensure it is fully charged. If you are visiting an unfamiliar area, download the What3Words app – it can help provide directions to emergency services. Inflatable toys and airbeds are designed for pools, not the sea where they can easily be blown offshore. Whatever your chosen activity, check the weather forecast and tide times. If open-water swimming, wear a brightly coloured swim hat – this will increase your visibility in the water.

If you fall into cold water (below 15 degrees C), you instinctively gasp for air increasing your chance of inhaling water. Fight your instinct to thrash around. Relax, lean back, extend your arms and legs. Float for around 90 seconds to acclimatise and control your breathing. Only then call for help or swim to safety.

If you are taking part in open water swimming or any water sports, invest in a personal flotation device (PFD) - a buoyancy aid or lifejacket - and a personal locator beacon (PLB). The type of PFD or PLB you choose will depend on the activity you are planning to do. You should always choose a device that has been tested and approved to UK or Irish standards. Tell someone where you are going and when you will be back. They can raise the alarm with the coastguard by calling 999 or 112 if you are overdue.

If you are walking your dog and it goes into the water, or gets stuck in mud, don't go in after them. Move to a place where the dog could get out easily and call them – they will probably get out by themselves. If you're worried your dog can't get out, call 999 or 112 and ask for the coastguard.

If you see someone in difficulty in the water, call 999 or 112 and ask for the Coastguard.

Once you have provided the appropriate information, stay at a safe distance and do not enter the water. Encourage them to float on their back. Look for anything you can throw to help them float (eg a life-ring). Keep watch until help arrives.

For more water safety tips and advice, please visit: [rnli.org/safety](https://www.rnli.org/safety)

Aldeburgh lifeboat station has been operating since 1826 and has been part of the RNLI since 1852. Since formation, their lifeboats have launched 1,267 times and saved 693 lives. Aldeburgh lifeboat station has two boats on service: Atlantic 85 lifeboat, Ralph, and D class inshore lifeboat, Susan Scott.

Follow us on social media (Facebook: @RNLIAldeburghLifeboat or Instagram @rnlialdeburgh) to keep up to date on our planned training launches and to join us for our annual open day in August.

**Jo Litt**

Volunteer Press Officer





Book with the **AWARD-WINNING** local Travel & Cruise **SPECIALISTS**

# Fred. Olsen Travel Agents

Incorporating **Framlingham Travel**

## HOLIDAY & CRUISE SHOW

**FREE** ★  
PRIZE DRAW  
AND SPECIAL OFFERS

**SUNDAY 28<sup>TH</sup>  
SEPTEMBER**

FROM **10AM - 3PM**

**ALDEBURGH JUBILEE HALL**

Crabbe Street, Aldeburgh,  
Suffolk, IP15 5BN

**SCAN  
HERE TO  
SECURE  
YOUR  
FREE  
TICKETS!**



**FEATURING...**



STAR CLIPPERS



SCENIC<sup>o</sup>  
LUXURY CRUISES & TOURS

Prestige  
TRAVEL



NATIONAL  
GEOGRAPHIC  
EXPEDITIONS



CUNARD



Wendy Wu Tours

**Fred.Holidays<sup>®</sup>**  
Tailor-made travel, full stops.



Fred. Olsen  
Cruise Lines



COX & KINGS  
ESTD 1758

EMERALD<sup>o</sup>  
CRUISES

**& MANY  
MORE...**

Come along and join the  
Fred. Olsen Travel Specialists  
at our Holiday and Cruise Show at  
**ALDEBURGH JUBILEE HALL** and  
find your next adventure!

**CALL, VISIT or SCAN** the QR Code to secure your **FREE tickets...**

29 Market Hill **Framlingham** IP13 9AN

**01728 724836**

✉ [framlingham@fredolsentravel.co.uk](mailto:framlingham@fredolsentravel.co.uk)

[fredolsentravelagents.co.uk](http://fredolsentravelagents.co.uk)



**SCAN TO VIEW OUR BRAND NEW MAGAZINE  
YOUR NEXT ADVENTURE STARTS HERE!**

# THE COME & GROW GARDEN PROJECT

What comes to mind when you imagine a stress-free morning away from all the 'must dos' of the day?

For a small group of people who meet at Aldeburgh Library on Wednesday mornings it has been sharing much fun and laughter learning about growing fruit and vegetables in raised beds and of course sampling the fruits (pun intended) of their labour.

A delightful group of men and women whose ages range through seven decades, came together with the aim of improving their well-being in friendly company and all leave the sessions feeling a sense of achievement and enjoyment from growing veggies and having had coffee, conversation and much laughter. It isn't compulsory to attend each week as life takes over sometimes, holidays are planned or grandchildren require attention.

As the amount of planting decreases and while crops are growing, we are adding other well being activities to the sessions, using the skills and talents within the group and friends such as ikebana flower arranging, talks on aging healthily and basic first aid. We have also visited the local allotments to see what other gardeners are growing and plan to return to see the vegetables ready to crop later in the summer.

The 'Come & Grow' Gardening Project is funded by a partnership of the NHS and Suffolk County Council and managed by Aldeburgh Library Foundation.

The funds enabled us to purchase sustainable raised beds (of a height which minimises the amount of bending or scrabbling on the ground), compost to fill the beds and tools to work the beds.

We advertised the group as a well-being activity for people who might be alone or who are new to the area and wanting to meet others, for care-givers, for those being cared for and anyone wanting to benefit from time outside in the fresh air, learning a few gardening skills in friendly company. The group is growing through word of mouth but we have a couple of spaces remaining for new members.

Do ask for an admission form at the library if you are interested in joining the group. You will be made to feel very welcome.

**Anne Parsons**  
Gardening tutor



## ALDEBURGH PHOTOGRAPHY GROUP

The next meeting of the photography group will be held on Wednesday 16th July at 7.30pm in the Aldeburgh Library with two speakers we hope will stimulate us to experiment and enhance our skills.

Local photographer, Caroline Greenwell, will present her unique take on recording life around her, images that are candid, different and always interesting. She will show what is possible with a smartphone, keen observation skills and, sometimes, a disregard of the photographic rule book.

We will also have the chance to view some amazing images of our committee member Anne Molyneux's recent trip to Alaska. We will see the landscape and wildlife and have the opportunity to question her on how some images were set up to maximise the chances of success.

The evening will conclude with members showing their images from the June photoshoot at Sizewell.

We are a friendly group and keen to welcome everyone from beginners to experienced photographers, from users of iPhones to the latest DSLRs.

We do not run competitions which put too many amateur photographers off joining local photography groups. Instead, we aim to help each other learn and improve our work.

If you want to know more, or if you want to check for up-to-date information on our meetings, please contact us through our website: [aldeburghphotographygroup.org.uk](http://aldeburghphotographygroup.org.uk).





*Time to be beautiful*

# Welcome inside **WIGS & MORE**

*Following on from the launch of my mobile wig business, **Wigs & More To Your Door**, back in May 2023, I am so excited to now officially open the doors to my new wig studio, situated in the IP12 area.*

The studio offers a comfortable and friendly home-from-home, which allows you the opportunity to explore a wide variety of wig options, where you'll be able to feel and try them on within a private and friendly space. This operates on an appointment-only basis so that the care and attention can be solely focused on you, the customer. I offer lots of advice and aftercare products that are available to you. You are encouraged to bring someone along with you so that you feel completely at ease and able to ask for that all-important second opinion from someone that knows you. Although there is a small charge for the appointment, this amount is deductible from a wig purchase but, as with all of my consultations, there is no pressure or obligation to buy.

In addition to offering an appointment within the new studio I am still happy to provide my personal home consultations which have always been at the core of my bespoke business. This extra option, however, now allows me to offer my caring and compassionate service to more people and to be able to reach out to those who live outside my usual area.

So if you, or anyone you know, could benefit from my personal and friendly service, please don't hesitate to get in touch and I look forward to hearing from you.

*Allison*






**wigs & more**  
TO YOUR DOOR

☎ 07547 142313  
✉ [info@wigsandmore.co.uk](mailto:info@wigsandmore.co.uk)  
📘 Wigs & more Suffolk  
📷 [wigsandmoresuffolk](https://www.instagram.com/wigsandmoresuffolk)  
🌐 [wigsandmore.co.uk](https://www.wigsandmore.co.uk)



**WOLF EYEWEAR**

**Marshall & Lilley  
Opticians  
LEISTON**

“Excellent range of glasses,  
Modern equipment and  
lovely staff. Would thoroughly  
recommend”

**T 01728 833114**  
**E [marshall.lilley@btconnect.com](mailto:marshall.lilley@btconnect.com)**



## WILDFLOWERS IN LINDEN ROAD



For anyone passing the bottom of Linden Road at the junction of Leiston Road, you will be aware that the dry spring has limited the growth of grass on the areas each side of the road. You may also have noticed that the number and abundance of wildflowers is increasing and not being overshadowed by long, dense grass.

The wonderful volunteers who manage this area regularly rake off mown grass, removing a sludgy layer which has accumulated after years of the grass cuttings being left on site.

This has allowed room for wildflowers to proliferate in the less fertile soil and in coming years they will spread.

The grass is regularly mown a metre in from the road to allow visibility for traffic and safety when crossing the road but the main areas of grass mowing take place in September each year when the seeds have set and dispersed. We would be really grateful if local residents didn't mow the area so that the wildflowers have a chance to grow and spread.

You may have noticed that following the display of daffodils and cowslips in spring we are now seeing clumps of yellow rattle, birds foot trefoil, poppies, clover, cranesbill, pink campion, mallow, buttercups and quite a few ox-eye daisies to name just a few of the plants which are now finding the conditions to their liking.

It takes a number of years to establish a wildflower area and it is important that cut grass isn't allowed to act as compost to fertilise the soil as wild plants have a preference for impoverished soils.

We are always pleased and grateful to have new members join our helpers to rake off the cut grass once or twice a year.

It is a pretty good workout and probably beats going to the gym! If you would like to help the team of volunteers do let me know at [amparsons46@icloud.com](mailto:amparsons46@icloud.com). You will be very welcome. Keep watching each year to see which other wildflowers are making Linden Road their home.

**Anne Parsons**



## THE SUFFOLK PEBBLE PAINTER

The Suffolk Pebble Painter has been recommissioned by the Aldeburgh Museum - housed in one of the best-preserved Tudor public buildings in Britain, the Moot Hall in Aldeburgh, having sold out of last year's painted pebbles. This year's batch are on display and for sale in Aldeburgh's must-visit landmark venue.



## BAWDSEY RADAR MUSEUM

On the site of the world's first operational radar station, the Bawdsey Radar Museum is open 11am to 4pm on Thursdays, Sundays and Bank Holiday Mondays until the end of October. Don't forget, kids get in free!

In August we celebrate the world's first airborne radar experiments at Martlesham Heath. To commemorate these events the Bawdsey Radar Trust, in conjunction with the Defence Electronics History Society and the Communications and Electronics Museum Trust, will be holding an event at Adastral Park, the home to BT's research and innovation labs at Martlesham Heath on 15th August 2025. There will be two sessions open to members of the public. **Session 1:** On the morning of 15th August, a series of mini-presentations aimed at those with little or no technical background, giving the opportunity to see replicas of the original airborne radar equipment. **Session 2:** On the afternoon of 15th August, longer presentations for those with some technical background. Advanced booking is essential, via the website. £12.50 per person per session. [bawdsey-radar.arttickets.org.uk/bawdsey-radar/](http://bawdsey-radar.arttickets.org.uk/bawdsey-radar/)

For more information contact [info@bawdseyradar.org.uk](mailto:info@bawdseyradar.org.uk) or phone 07821 162879





## LEISTON BOOK FESTIVAL

An inspiring one-day festival. Six authors, each with a story to tell about our evolving landscape.

Sat 20 Sept | Leiston Film Theatre  
BOOK NOW! | [leistonbookfestival.co.uk](http://leistonbookfestival.co.uk)



## Jules Chair Repairs

Cane, Rush & Seagrass

Mobile: 07581 007246  
Email: [juleschairrepairs@gmail.com](mailto:juleschairrepairs@gmail.com)  
@Jules-Chair-Repairs



### Outdoor Theatre

The Pantaloons are bringing their signature blend of humour and energy to our pub gardens.

Hamlet at The Ship - Wednesday 13th August  
Hamlet at The Westleton Crown - Wednesday 10th September

### Beer & Cider Festival at The Ship

Friday 1st - Sunday 3rd August

Enjoy two pints for £10 or five pints for £20. Buy your stamp cards on our online shop now or purchase on the day.

For information on upcoming events, menus and more, head over to our websites below  
[shipatdunwich.co.uk](http://shipatdunwich.co.uk)   [westletoncrown.co.uk](http://westletoncrown.co.uk)





### Southwold & Aldeburgh Summer Theatre season 2025



**See How They Run! By Philip King**  
Aldeburgh - 21st to 26th July  
Southwold - 30th July to 9th August  
Classic West End Farce as V.E. day Vicars chase a German POW – and their troupe!

**GASLIGHT by Patrick Hamilton**  
Aldeburgh - 28th July to 9th August  
Southwold - 13th to 16th August  
Murder, Mystery, and Manipulation in the original Psychological Thriller

**Things We Do For Love by Alan Ayckbourn**  
Aldeburgh - 11th to 16th August  
Southwold - 20th to 30th August  
Comic, Cruel, Ayckbourn at his best, in a darkly toxic love-triangle - a 'Private Lives' for modern times.

**While The Sun Shines by Terence Rattigan**  
Aldeburgh - 19th to 30th August  
Southwold - 3rd to 6th September  
A sparkling, 1944 Romantic with the plot of a perfect farce. Love, hope and laughter, even in the darkest of times.






Tickets £16 or £22. Evenings 7:30pm. Matinees 4pm (Thurs & Sat)

## BOOK NOW Call 01728 343344 (no fees)

or [www.ticketsource.co.uk/southwoldandaldeburghtheatre](http://www.ticketsource.co.uk/southwoldandaldeburghtheatre) (fees apply)





# ALDE VALLEY SUFFOLK FAMILY HISTORY GROUP

## 'The Garrett Family' – Fraser Hale

In this talk Fraser Hale will be taking us on an illustrated stroll through the lives of the Garrett family, from their roots in Woodbridge, through the early years of growth in Leiston, and then along two diverging boughs; the later Leiston branch, who were manufacturers of agricultural machinery, steam engines and trolleybuses, and the stout and fruitful Aldeburgh branch, who played a significant role in the town's development and were prominent figures in various fields.

Fraser came to the heritage sector after a 35 year career in engineering. As well as his engineering qualifications, he holds a BA (Hons) in History and was the curator at Woodbridge Tide Mill for five years before joining the Long Shop Museum in Leiston as Operations Manager in late 2020. He graduated to Museum Director in early 2023.

The talk takes place on Monday 21st July at 2.30pm, in person at the Fromus Centre, Street Farm Road, Saxmundham, IP17 1AL (behind the library) and, for members only, on Zoom. The talk starts at 2.30pm. No need to book – just turn up — at £1 for members, £3 for visitors, including tea/coffee/biscuits. Good, free car-parking. Only members can take part in our meetings on Zoom, but it only costs £8 for a year's membership – see <https://avsfhg.org.uk/membership/> and Zooming is free.



**Elizabeth Garrett Anderson**

In May members of the the Alde Valley Suffolk Family History Group gave short talks about their researches into some of their forebears. First up was Charles Turner, who spoke about his collection of family medals. These included his Grandfather's medals from WW2. He was the 1st Radio Officer on SS Benlomond which was torpedoed in 1942 with only one survivor, Poon Linn – who survived on a life raft for 133 days! Charles' father served in the Royal Naval Patrol Service as a Radar Operator on HMT Indian Star during WW2. His First Cousin once removed also served in the Royal Navy and was fortunate to serve on ships that never fired in anger. Lastly Charles spoke about his 3x Great Grandfather who fought in the Peninsula War. He served from 1809-1816 completing his 7 years service. He received the Military General Service Medal with 9 bars for the battles he fought in. The medal was issued in 1848. He had to have survived his service and then apply for the medal in 1847 in order to receive it.



## Charles' Grandfather Norman Reade

Charles was followed by two sisters, Jenny Mann and Pat Carter, who spoke about 'The Uncle We Never Knew'.

*"Our Grandparents James William Chambers and Hilda Gertrude Songer married in 1918 and they lived in Wolsey Cottages, Hog Hill, Yoxford.*

*"Their first son William Robert was born in November 1919. Billy's siblings were Jonas, James (Jimmy - our father), Amy, Peter and John.*

*"We knew that Billy had died in WW2, a great shock to the family and especially to his mother. We saw family photos but wanted to look into what had happened to our uncle. It was possible to find his war record showing that Billy, aged 17, joined the Royal Marines at Deal on 16th March 1937 and then moved to Chatham, Devon. Eventually, on 7th May 1938, having been described as a 'very good character' with 'superb ability', Billy joined HMS Cornwall. On 17th January 1939 Billy moved to HMS Repulse. By 17th September 1940 Billy had been made a temporary corporal and spent two months at the Royal Marines Reservists Depot. On 19th January 1941 Billy, described as a Non-commissioned Officer, was on HMS Prince of Wales. In October the ship was travelling via South Africa and Ceylon (now Sri Lanka) to the Far East, arriving in Singapore on 2nd December 1941. On 10th December 1941 the Prince of Wales set off with HMS Repulse to intercept the Japanese invasion fleet in the South China Sea. The Battleship HMS Prince of Wales and HMS Repulse were both sunk by the Japanese Navy on that day, three days after Pearl Harbour. Some crew were able to get onto HMS Express; 20 Officers, 280 Sailors and 27 Marines lost their lives. Our Uncle Billy stayed onboard and largely due to his "efforts and ability, coolness and example" the supply of ammunition to the guns continued, as mentioned in his citation for bravery. Also Billy continued closing down magazines and shell rooms in a final effort to keep the ship afloat. Sadly, the ship turned over and sank, taking all those brave men.*

*"Our Grandparents received Billy's citation and medals: The 1939 - 1945 Star including an oak leaf to represent "Mentioned in Dispatches" for his bravery. They also received the Atlantic Star and the Pacific Star. Corporal W.R.Chambers' name is on the Roll of Honour in Yoxford Church and is also remembered with honour on the Plymouth Naval Memorial".*

Lastly Maureen Botwright stepped forward to tell us about her search for information about her grandfather, her dad's father Walter, which is ongoing!

# PROJECT UPDATE

## JULY 2025

### Work across all Sizewell C sites continues to progress at pace.

You may have seen recent media coverage regarding funding of the Sizewell C. On Tuesday 10 June, the UK government gave the go-ahead for Sizewell C. This is the first British-owned nuclear power station to be announced in over three decades, with the government as a majority shareholder alongside EDF.

The Chancellor confirmed £14.2 billion of investment will be allocated to the project. It is the first nuclear power station in the UK to be funded through a Regulated Asset Base (RAB) model. Under the model, consumers are protected through independent regulation, strict cost controls, and transparent oversight – so families benefit from secure, low-carbon energy without the risk of cost overruns.

We are aware there are several key summer events coming up. We are in direct contact with Latitude and will work around their peak traffic times and remove our HGVs. For the Ed Sheeran concerts, we are working with Suffolk County Council to ensure disruption at Darsham Station does not affect travel. We will also not have any HGV movements during the Aldeburgh Carnival. The closure of Willow Marsh Lane will require cyclists on the Dunwich Dynamo to take the official diversion so we will actively communicate this on social media. GPS maps have been updated so riders can follow the designated route.

We have now installed average speed cameras along the B1122 and B1125 to further enhance road safety for the 30mph speed limit. We are also upgrading the temporary Sizewell C A-frame signs along the A14, A12 and local roads to permanent signs on posts. Further speed restrictions along the A12 are being implemented, including south of Yoxford, to ensure road safety as HGVs and construction vehicles manoeuvre on the sites. Further speed restrictions will be implemented in due course on the A12 at Darsham and the Friday Street turning.

Pre-construction works are progressing well and the roads, roundabouts and park rides will start construction this summer. The main site and temporary construction area are also preparing for construction, along with the temporary sea defence works along the beach.

Preparation for the Friday Street Roundabout is ongoing, with a works compound being established, and the vegetation and tree clearance along the A12 is almost complete. Site preparation along the two-village bypass route around Farnham and Stratford St Andrew is also ongoing, and Yoxford Roundabout is being prepared for construction.

**There are now monthly email updates available on subscription, if you would like to subscribe, please create an account at [szcworkstracker.co.uk/my-account](https://szcworkstracker.co.uk/my-account)**

## FORUM

## SCHEDULE

All forum timings  
18:30 - 20:30  
(Arrival from 18:00)

### Main Development Site Forum

Wednesday  
2 July 2025

Leiston Town  
Athletic Association

### Northern Transport Forum

Wednesday  
6 August 2025

Darsham Village Hall

### Southern Transport Forum

Wednesday  
3 September 2025

Stratford st Andrew  
Riverside centre

For more information and for all 2025 forum dates visit [sizewellc.com/community/forums](https://sizewellc.com/community/forums)

VISIT THE WORKS  
TRACKER SITE



**Sizewell C**  
The power of **good for Britain**



# JULY AT ALDEBURGH CINEMA...

We've got a great line-up of movies coming in July, all screened via our fantastic 4K laser projector...

A huge hit with our audiences, **THE SALT PATH** stars Gillian Anderson and Jason Isaacs as Raynor and Moth Winn, a couple who decide to travel the south west's famously gorgeous rugged coastline in search of solace after a combination of crises in their lives, as captured in Raynor's prize-winning memoir of the same name.

**THE BALLAD OF WALLIS ISLAND** follows Charles (Tim Key), an eccentric lottery winner who lives alone on a remote island and dreams of getting his favourite musicians, Mortimer-McGwyer (Carey Mulligan and Tom Basden) back together. His fantasy becomes a reality when the bandmates and former lovers accept his invitation to play a private show at his home on Wallis Island.



Tom Cruise is Ethan Hunt in **MISSION: IMPOSSIBLE – THE FINAL RECKONING**. Our lives are the sum of our choices.

**JANE AUSTEN WRECKED MY LIFE** stars Camille Rutherford as Agathe, a hopelessly clumsy yet charming young woman who works in the legendary Shakespeare & Co. bookshop in Paris. While she dreams of being a successful writer and of experiencing love akin to a Jane Austen novel, she finds herself desperately single and plagued by writers block.

When Agathe's best friend (Pablo Pauly) gets her invited to the Jane Austen Writers' Residency in England, she finally has her Jane Austen moment...and is caught in a very unexpected romantic triangle.

Inspired by an incredible true story set against the backdrop of a country torn by conflict, **FROM HILDE WITH LOVE** is a powerful tale of love and resistance. Berlin, 1942.

A shy Hilde falls in love with Hans and gradually finds her place in the resistance group that would come to be known as the 'Red Orchestra'.

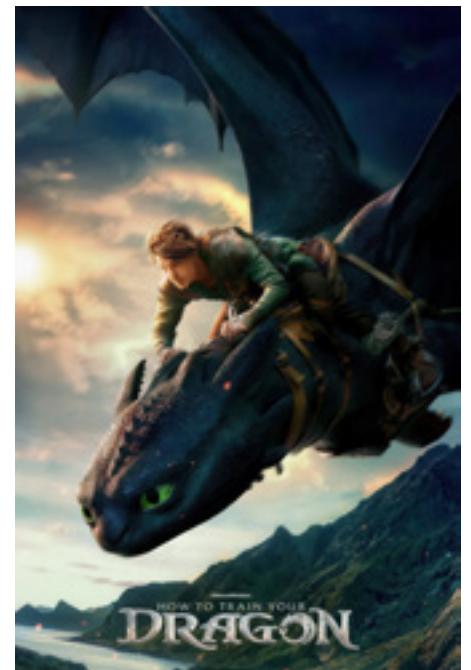
Together, they spend a beautiful summer where their relationship entwines with quiet acts of defiance. But when the Gestapo arrests members of the group, Hilde and Hans are among their numbers and must find the strength to confront their situation.

From the filmmakers behind *Top Gun: Maverick* comes the high-octane, action-packed feature film **F1 THE MOVIE**. Dubbed "the greatest that never was," Sonny Hayes (Brad Pitt) was FORMULA 1's most promising driver of the 1990s until an accident on the track nearly ended his career.

Thirty years later, he's pulled back in to drive for a struggling Formula 1 on the verge of collapse.



**HOW TO TRAIN YOUR DRAGON** is a stunning live-action reimagining of the film that launched the beloved franchise. On the rugged isle of Berk, where Vikings and dragons have been bitter enemies for generations, Hiccup, the inventive yet overlooked son of the Chief, defies centuries of tradition when he befriends Toothless, a feared Night Fury dragon. When an ancient threat emerges, endangering both Vikings and dragons, their friendship becomes the key to forging a new future.



Oscar-winning director Danny Boyle and Oscar-nominated writer Alex Garland reunite for **28 YEARS LATER**. It's been almost three decades since the rage virus escaped a biological weapons laboratory. One group of survivors lives on a small island connected to the mainland by a single, heavily-defended causeway. When one of the group leaves the island on a mission into the dark heart of the mainland, he discovers secrets, wonders, and horrors that have mutated not only the infected but other survivors as well. Jodie Comer, Aaron Taylor-Johnson and Ralph Fiennes star.

Our July programme isn't finalized at the time of going to print so please visit [aldeburghcinema.co.uk](http://aldeburghcinema.co.uk) for full details about what's on and when.

There, you can also book tickets and easily sign up to our regular email newsletter. We're also on Twitter/X, Instagram and Facebook.

# BETRAYAL IN BERLIN



This novel surveys the tumultuous events that took place between 1925 to 1945 through the life of John Samson, a Physics postgraduate who wins a place at a prestigious Berlin University. After two psychological thrillers, *Betrayal in Berlin* represents a shift into historical fiction from Michael Shew. The novel is partially set in Aldeburgh. Born into a working-class London family, scientist John Samson is committed to fighting for a fairer, more equal world.

However, his ideals are put to the test when he becomes entangled with the security services in Weimar Germany, leading to the abrupt end of his Berlin career and his intense relationship with a Jewish Berliner. As global upheaval shapes his life, John struggles to uphold his values, hurting those closest to him, including the two women he loves.

Haunted by guilt over his past, he returns to Berlin after the war, facing new challenges and seeking redemption. Confronted by a dramatic shift from liberal democracy to authoritarian populism and conflict, John is plunged into a turbulent world with unsettling echoes of today. Michael Shew, a former London headteacher, began writing fiction after retiring from a successful career in education.

His debut novel, *Lessons in Lying* (2019), was followed by *Backlash* (2021). *Betrayal in Berlin*, a shift into historical fiction, spans the period from 1925 to 1945 in London and Berlin. Michael lives in Hackney, London, with his wife and adult daughter.

Michael explains: "After two psychological thrillers, I decided to pursue an idea I'd long had for a historical novel set in Germany's Weimar Republic in the 1920s and 1930s. As a former physics teacher, I've always been fascinated by this period of European history, not only for the radical changes in science, the arts and politics but for its rapid descent from liberal democracy to authoritarian populism and its abuse of science for this purpose.

"These dramatic historical developments gained relevance even as I was writing the book, with the turbulence facing our world today. I wanted to explore the impact of such dramatic social and political changes through the lives of my characters."



## Ashleigh's Footcare

**Mobile Foot Health Professional**  
Dip FH MCFHP MAFHP

Fully qualified and registered Foot Health Care Practitioner providing a variety of footcare treatments and advice in the comfort of your own home. Covering Saxmundham, Woodbridge, Framlingham and surrounding areas

- Nail trimming
- Corns
- Ingrown nails
- Callus
- Thickened nails
- Verrucas
- Fungal nails
- Diabetic Footcare





07405874562



Ashleigh's  
Footcare



Ashleighsfootcare@outlook.com

For more details and bookings please get in touch  
**Fully Insured and DBS accredited**

## SIBTON COUNTRY SUPPLIES LTD. GARDEN MACHINERY

Deals available on  
**Lawnmowers, Strimmers and all  
types of garden machinery**

Wild Bird Food also available

The Forge, Sibton IP17 2JH | Tel. 01728 660 349

## THE LEAGUE OF FRIENDS OF ALDEBURGH AND DISTRICT COMMUNITY HOSPITAL

(Charity Number 247890)

invites you to a

## GARDEN PARTY

In the hospital grounds

Sunday 27<sup>th</sup> July 2025 3pm – 5pm



Raffle

Renew your  
membership

We will be serving tea and coffee  
with cake (inc gluten free)  
all made in the hospital kitchen.  
Live music too. Do come. Bring a friend.





# Hello Aldeburgh



We are your local community radio station, broadcasting online to bring you a varied mix of music programmes, stories and information about what's on in our area.

## Have you discovered us yet?

Listen online at: [www.abcradio.co.uk](http://www.abcradio.co.uk) via the app and on Alexa




## BOOK REVIEW

### 'Raising Hare' by Chloe Dalton

In the winter of 2021 during the second lock down Chloe Dalton, who was working for a political think tank and living in the country, came across a new-born abandoned leveret which she took into her home and nurtured.

This is a story beautifully told, of the young hare's progression from infancy to adulthood.

We hear how the leveret used Chloe's home as her own and how eventually the adult hare herself went on to have a litter of her own that also used the house.

The book is a wonderful observation at close quarters of this fascinating creature and Chloe's bonding with it.

Her newfound terror of stoats, domesticated dogs and foxes because of her attachment to the animal and her thoughts on the plight of hares in general make this book a brilliant read.

At the end, like the author, I felt an emotional attachment to a creature that I have long admired for its beauty.

**John James**

The Aldeburgh Bookshop



## THOMPSON'S GALLERY

### Jo Taylor - Solo Exhibition.

12th July Thompson's Gallery. This exhibition will comprise of entirely new work, showing different subject matters but in the same distinctive style which Jo has become known for.

This body of work really highlights her understanding of nature, the physiology of animals and her underlying skill at drawing which makes for the solid foundation of being a truly talented artist

Jo lives and works in Lancashire.



**norwichsunblinds**

**Buy 2  
Get 1 Free**  
on in-house blinds

01953 544041

[www.norwichsunblinds.co.uk](http://www.norwichsunblinds.co.uk)  
T&Cs apply



Holiday let owner?  
Scan here to get  
your guide to letting

# Find your happy place



Quality self-catering holiday homes across the UK & Ireland



# NEW CHAIR & PRESIDENT FOR BRITTEN PEARS ARTS

Angela Mallinson (Sullivan) will become the new Chair of Britten Pears Arts, succeeding Sir Simon Robey who becomes President alongside Lord Stevenson and Colin Matthews. Angela has been a trustee since 2020, following the merger of the Britten-Pears Foundation and Snape Maltings.

Angela has worked in artist management for over 40 years globally representing leading international conductors, solo instrumentalists and chamber ensembles. This included a 30-year partnership with Indian virtuoso Ravi Shankar, as well as developing the career of the ground-breaking sitarist Anoushka Shankar, including collaborations ranging from the British Film Institute to Glastonbury Festival. As Director of Maestro Arts and co-founder of Sullivan Sweetland, Angela gave particular focus to nurturing young musicians as well as bringing fresh impetus to mid-career artists. She was presented with the ABO/Rheingold Artist Manager of the Year Award in 2019. Having previously studied psychology as well as music, she has a deep belief in the transformative power of music to enhance lives and has cherished the opportunity to support this as Trustee of the Britten Pears Foundation and more recently of Britten Pears Arts. She has been coming to the Aldeburgh Festival and Snape Maltings with her family for many years and settled in Aldeburgh permanently in 2017.

During Sir Simon's tenure BPA has grown considerably, expanding its performance and artist development programme with an increased focus on Creative Health, securing ownership of the Snape Maltings site in 2015 and merging with the Britten Pears Foundation (The Red House and Archive) in 2020. As a choral scholar at Magdalen College, Oxford, Sir Simon read English. He later embarked on a 25-year career at Morgan Stanley. He co-founded Robertson Robey LLP and latterly was joined by Simon Warshaw to create Robey Warshaw LLP, a specialist corporate finance advisory business. He is Chair of the Royal Academy of Music, a trustee of YCAT (Young Classical Artists Trust) and Honorary Vice President of the Royal Opera House, following 10 years as Chair.

Sir Simon was knighted in the Queen's Birthday Honours in June 2016 for services to music.

Lord Stevenson, President, Britten Pears Arts commented, "One of the proudest things I have ever done is handing over the role of Chair to Simon and watching this wonderful organisation fly under his leadership. It has gone from strength to strength, and on behalf of everyone at BPA, please accept our heartfelt thanks and gratitude for all your dedication and achievements. I am delighted that Simon is now joining Colin Matthews and me as President. I look forward to seeing BPA continue to thrive with Angela at the helm, and I know she will drive the organisation forward with passion and care."

Sir Simon Robey commented, "It has been the greatest privilege to lead this organisation through a period of enormous change and development over the last decade, and to have worked with three exceptional Chief Executives in Jonathan Reekie, Roger Wright and Andrew Comben, wonderful board colleagues and the marvellous team at BPA. We all firmly believe in the power of music to transform lives and this is central to everything we do. Angela shares this belief and passion, and I know BPA will continue to thrive under her leadership, working alongside Chief Executive Andrew Comben, whom Angela was instrumental in appointing last year. I have loved this place since I was a child and I will love it for the rest of my life, so I am deeply honoured to be appointed president alongside Dennis and Colin."

Angela Mallinson commented, "It is such an honour to take up the role of Chair of Britten Pears Arts having been on the board since 2020. I have been coming here for many years and moved to Aldeburgh in 2017, and it is a truly special place. I'd like to pay tribute to Sir Simon Robey for his strategic vision that brought about the acquisition of the Snape Maltings site and together with Sir Vernon Ellis the merger with the Britten Pears Foundation in 2020, and whose courage and empathy guided the organisation through the difficult pandemic period."

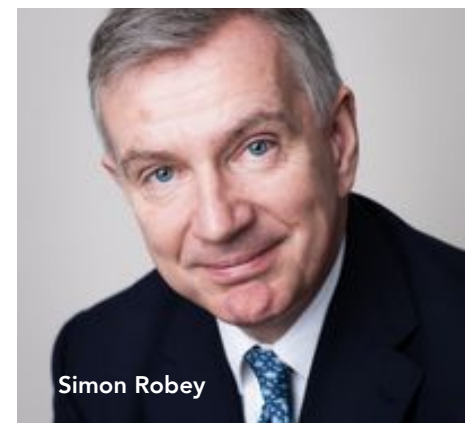
"Simon's leadership and support for BPA is remarkable and I am deeply grateful for everything he has done to preserve the legacy of this wonderful organisation and setting it up to thrive into the future. The board and I are hugely excited to work with Andrew and the team at BPA to ensure that we continue to deliver Britten and Pears' vision for music and the arts to be useful, helping people enhance and bring joy into their lives and to work together to grow the future of classical music."

Hazel Edwards, South East Area Director, Arts Council England, said: "We warmly welcome Angela Mallinson's appointment as Chair of Britten Pears Arts and congratulate Sir Simon Robey on his new role as President. Angela brings a wealth of experience and a deep commitment to artist development and cultural leadership; her appointment signals an exciting new chapter for Britten Pears Arts."

Other new appointments include David Robbie becoming Deputy Chair of the BPA Board and Matthew Gregory will chair the Finance Audit and Risk Committee. BPA will be recruiting for new trustees to join its board later this year.



Angela Sullivan



Simon Robey



## Leiston Veterinary Clinic

Marina Goodchild BVSc MRCVS  
1D Eastlands Road, LEISTON, SUFFOLK IP16 4LL  
Telephone: (01728) 833566  
Fax: (01728) 833478  
www.leistonvets.com

Surgery Hours Monday - Friday 8am - 6pm Saturday 8.30am - 12pm  
Consultations by Appointment - 24 Hour Emergency Service

## Barbara Sports Massage Therapist

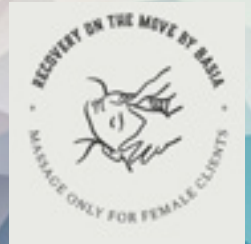
Relieve tension, boost recovery, and enhance performance with massage tailored to your needs!

- Sports Massage Therapy
  - Sports Injuries
  - Deep Tissue Massage
  - Soft Tissue Therapy

CALL, TEXT or EMAIL for bookings  
07516 007 999

[Recovery.On.The.Move@gmail.com](mailto:Recovery.On.The.Move@gmail.com)

Feel revitalised and ready to take on the world!



## RSPB Minmere Nature Reserve

Wildlife - Shop - Café - Events - Family Activities



[rspb.org.uk/days-out/reserves/minmere](http://rspb.org.uk/days-out/reserves/minmere)



## HOLMES GLAZING

UPVC Timber & Aluminium Windows & Doors  
Glass cut-to-size  
Repairs & Maintenance  
Hardie Plank Cladding  
Fascia, Soffit & Guttering  
Mirrors & Coloured Splashbacks  
Double Glazed Units & Specialist Glazing  
Conservatories, Porches & Warm Roofs

01728 648678

[www.holmesglazing.co.uk](http://www.holmesglazing.co.uk)  
[holmes.glazing@yahoo.co.uk](mailto:holmes.glazing@yahoo.co.uk)

NEW Specialist  
Suppliers of Zero  
90 Triple Glazed  
Systems



Zero90 range is the 1st  
of its kind in the UK  
• 90mm Casement  
• 48mm Triple Glazed  
• Unrivalled Energy  
Saving



## TONY BROWN'S FUNERAL SERVICE

Est.1979

*Proudly independent family run business*

The Funeral Parlour, New Cut, Saxmundham, Suffolk, IP17 1EH  
T:01728 603108  
E: [office@tonybrownsfuneralservices.co.uk](mailto:office@tonybrownsfuneralservices.co.uk)  
[www.tonybrownfuneralservices.co.uk](http://www.tonybrownfuneralservices.co.uk)



Owners of The Greenwood Burial Ground, Farnham

## RIVERVIEW GARDENING

Garden & Grounds Maintenance

Providing all aspects of garden and grounds maintenance to both domestic and commercial customers, Ride-on lawnmower available

Green waste removed

EXPERIENCED - QUALIFIED - INSURED

Call Oliver - 07779152936 - 01728561990  
Email - [riverviewgardening@gmail.com](mailto:riverviewgardening@gmail.com)

# A1 Carpets

By Gary Burden

4U

**For the complete A1 Home Selection Service**

Carpets, Vinyl & Luxury Vinyl Tiles  
Professional, reliable and competitive  
Save ££££'s - We will beat any genuine retailer quote!

Tel: 01728 604396 Mob: 07419 375720  
[www.a1carpets4u.co.uk](http://www.a1carpets4u.co.uk)



## ALLVAC

### SERVICE & REPAIR

KIRBY & DYSON SPECIALIST

HAVE YOUR VACUUM CLEANER  
COLLECTED FULLY SERVICED AND  
RETURNED AT YOUR CONVENIENCE FOR

# £35

ALL MAKES AND MODELS

PAUL LAYTON  
01379 871095 OR 07866 549642



# ALDEBURGH GARDENING CLUB

When I had my first garden in London, I somehow got onto the mailing list for the Bressingham plant catalogue. This was a glossy magazine of coloured perennial plant photos with excellent and often mouthwatering descriptions and included some very useful advice on the conditions that each plant liked.

Not only did I buy a few plants here and there but I also learned a lot that has stood me in good stead since. Blooms had a bit of an obsession with new varieties of plant, maybe an unusual species or more often a new colour variant of a more well known plant. We still grow a lot of them today probably unknowingly. Crocosmia "Lucifer" anyone? I didn't buy much at the time, I was too short of money, but I recall lusting after many plants. The photography was very good and there wasn't any colour enhancement or fake plant combinations set up, though some varieties as I recall turned out to be very wimpish in practice. One thing I liked the look of was a small Campanula, a low growing spreading blue bellflower.

I can't honestly remember which one was in the catalogue and I didn't buy it anyway.

There are actually two similar species available with unnervingly similar names C. poscharskyana (named after a gardener from Dresden) and C. portenschlagiana (named for an Austrian botanist); easy to buy the wrong one I reckon. Buying the wrong one might be a big mistake as "poscharskyana" looks to be a bit of a thug. It has lightish blue starry flowers and is very pretty. I have seen it take over a gravel garden but also very successfully colonise the gap at the bottom of a privet hedge between the hedge and the lawn and creeping a way up the hedge as well. So perhaps to be classified as useful and pretty but maybe also a thug? I have been growing hardy Cyclamen hederifolium in the dry shade of my crack willow tree for twenty years or so and they are lovely but for a good portion of the year from mid spring to late summer they vanish and leave bare soil ripe for weed colonisation.

My dog also likes to scratch around in dry powdery soil so regular replanting of scraped up Cyclamen corms can be necessary.

I needed something to cover that bare ground which would allow the cyclamen to come up through it and would cope with dry shade; I thought something a bit thuggish might be appropriate.

Ladybird obliged with a small Campanula. The one I bought, however isn't the thug I first thought of but C. portenschlagiana. This one has much more vivid purple blue flowers, is less starry in flower shape and in three years hasn't spread at all, forming a neat round mound covered with flower for about three months. It seems to be just as tough once established though and rooted reasonably easily from a spring cutting.

So maybe a bit of name confusion has served me well this time?

**Karen Mountford**

[aldeburghgardeningclub.org.uk](http://aldeburghgardeningclub.org.uk)



**YOUR LOCAL  
BUILDING AND  
LANDSCAPING  
CONTRACTOR**

For all your **home improvements**



We specialise in building repairs and protection, including masonry, stone, and concrete repairs, waterproofing coatings, and damp proofing. Our expert team ensures lasting solutions for modern and historic structures.

- Specialising in external render and damp proofing systems
- Stone and brick repairs, cleaning and re-pointing
- Roof repairs ■ External painting ■ Fascia and gutters
- Windows and doors ■ Insurance-backed guarantee
- K-Rend approved contractor ■ Doff approved contractor

**GET YOUR  
FREE  
QUOTE  
TODAY!**



*Speak to the  
professionals today!*

## TRANSFORM YOUR OUTDOOR GARDEN SPACE

As experienced, professional landscapers, we specialise in hard landscaping and soft landscaping for domestic and commercial projects, as well as design concepts and garden structure installation.

- Fencing and gates ■ Decking ■ Concrete pads ■ Landscaping
- Driveways ■ Resin bound drives ■ Patios ■ Drainage
- Garden sleepers ■ Ponds ■ AND LOTS MORE!!!

**GET IN TOUCH TODAY FOR ALL YOUR LANDSCAPING ADVICE**

Got a project in mind? We're here to help! Reach out to us with any questions, ideas, or requests you may have. Our team of experts is ready to assist you every step of the way.

**07943 854741**

**dmbungay@gmail.com**

**22 Earsham St, Bungay, NR35 1AG**

# PEARCE & KEMP

LIMITED

Tel: 01986 872130

enquiries@pearce-kemp.co.uk • www.pearce-kemp.co.uk

Unit 20, Halesworth Business Centre, Norwich Road, Halesworth IP19 8QJ

DOMESTIC • COMMERCIAL • INDUSTRIAL • STREET LIGHTING

REWIRING • LIGHTING • EXTRA SOCKETS • SHOWERS

ECONOMY 7 HEATING • PORTABLE APPLIANCE TESTING

INSPECTING &amp; TESTING • DATA CABLING • EMERGENCY LIGHTING

FIRE ALARM INSTALLATIONS • FREE ESTIMATES

PART P INSTALLERS



OVER 50 YEARS EXPERIENCE



# ALDE FENCING

*Agricultural, Domestic, Commercial,  
Repairs & Gates*

For a free quotation please contact Adam on

01728 633144 | 07896 766719

adamblowers@btinternet.com

www.aldefencing.com



## BUILDING & ROOFING

T: 01728 451933 M: 07831 700135

W: www.ianculf.co.uk E: ianculf@hotmail.co.uk

For All Your Roofing &amp; Building Requirements

FREE ESTIMATES 30 YEARS EXPERIENCE

Brickwork, Flat roofs, New roofs, Roof repairs, Lead work,

Conversions, New builds, Paving, Fibreglass roofing,

Rubber Roofing, General repairs &amp; Maintenance etc.



# JOHN BRIDGES GARDEN LANDSCAPER

PATIOS | RAISED BEDS | FENCING  
PERGOLAS | TURF LAYING

30 yrs experience

01728 832972 | 07787163249  
bridgesjac@gmail.com

# What's On at Leiston Film Theatre

Fri 4th July at 6.00pm

Sat 5th &amp; Sun 6th July at 3.00pm &amp; 6.00pm

## HOW TO TRAIN YOUR DRAGON PG

Mon 7th, Tues 8th &amp; Thurs 10th July at 7.15pm

## THE PHOENICIAN SCHEME 15

Fri 11th, Sat 12th, Mon 14th &amp; Tues 15th July at 7.15pm

Wed 16th July at 3.00pm &amp; 7.15pm

Thurs 17th July at 7.15pm

## F1: THE MOVIE 12A

Sun 13th July at 7.30pm. LIVE ON STAGE

## THE BOOTLEG SHADOWS

Fri 18th July at 7.15pm

Sat 19th July at 4.00pm &amp; 7.15pm

Sun 20th July at 6.00pm

Mon 21st &amp; Tues 22nd July at 7.15pm

Wed 23rd July at 4.00pm &amp; 7.15pm

Thurs 24th July at 7.15pm

## JURASSIC WORLD: REBIRTH 12A

Fri 25th July at 7.15pm

Sat 26th July at 4.00pm &amp; 7.15pm

Sun 27th July at 6.00pm

Mon 28th &amp; Tues 29th July at 7.15pm

Wed 30th July at 4.00pm &amp; 7.15pm

Thurs 31st July at 7.15pm

## SUPERMAN 12A

Mon 28th, Tues 29th &amp; Thurs 31st July at 3.00pm

## ELIO PG

Fri 15th Aug at 7.30pm. LIVE ON STAGE

## COUNTERFEIT QUO

Sat 30th Aug at 7.00pm

Sun 31st Aug at 23rd May at 3.00pm

## ANDRÉ RIEU'S 2025 MAASTRICHT CONCERT WALTZ THE NIGHT AWAY PG

From Fri 12th Sept

## DOWNTON ABBEY THE GRAND FINALE

High Street, Leiston, Suffolk. IP16 4BZ

Tel: 01728 830549, or visit:

www.leistonfilmtheatre.co.uk



## BRIAN FROM MELTON

Melton's famous resident, Brian, shares his stories, views and observations on everyday life with his very own column, exclusive to The Tide Collection magazines.

For me, July is a funny ol month. There's nothing I like more than sitting owt in the garden enjoying the wonderful Suffolk sunshine with a bag a Frazzles and a bottle of Ghost Ship. Lovely. I never have understood why so many folk want to head orf on a holiday to foreign parts, when they spend most of the time moaning about how hot it is and fighting for a sunbed.

The gal Rosemary next door last year suggested that I could go away to Spain with her for my first ever jaunt abroad. I wernt convinced that was a good idea, but she said it would do me good to get away, so I decided I'd give it a go and I hev to say, that as the holidee got closer, I did get a bit excited.



Fust of all, we hed to get through Stanstead Airport - a ruddy great greenhouse with people, bags, kids and planes everywhere. Checking me bag in was easy, as I wernt taking a lot with me - just sum shorts and short sleeved shuts and a pair of rubber sandals that Mother hed bort for me years ago. I never fort I'd wear them and nearly give them to that lot who come round and take your old bits away. Good job I dint.

I hed a bit of trouble in security with that scanner thing. That kept beepin, so I hed to take me belt orf and then my trowsers nearly fell down.

We then hed to wait to get on the plane for ages,

so we hed a drink while we were waiting and then hed to get on the plane at this thing called a gate. Now why do they call it a gate, when it's a door? That dunt make no sense to me.

That was my fust time on a plane and the airplane lady cud tell I was nervus and even give me a bag in case I was sick.

When it finally took orf, it shot down the runway and as it went up I'm sure I could hear evry nut and bolt straining to get in the air.

Once we were up above the clouds, the gal Rosemary hed a glass of wine and I hed one of them posh beers - it must be a posh beer, because that cost a ruddy fortune and I dint like it either. In fact, that went right through me, so I hed to use the smallest loo I hed ever sin and wen I flushed it, I'd never sin anything like it - it was a good job I was standing up too, else that might hev bin me lot!

I hev to say that the holiday was right nice and I wud probably go away agen another time. But for me, there's no place like home, with my own bed and food I know and can eat and like I sed, the blue Suffolk skies.

I just hope we hev plenty of sunny days in July and August.

You can hear Brian from Melton chatting with Mark Murphy every Saturday morning on Suffolk Sound Radio and listen out for the new Brian from Melton podcast, coming soon to Alde and Blyth Community Radio ([www.abcradio.co.uk](http://www.abcradio.co.uk)).

## LIBRARY NEWS

The library service is now part of Suffolk County Council and is now known as Suffolk Community Libraries.

**New telephone number: 01728 587100**

**Tuesday 15th July, 9.30am – 2pm: The Big Bike Revival.** FREE safety checks and basic bike services to keep you cycling locally. Book your bike for maintenance and advice with Martin. Text 07966089881 or email: [martsmith63@hotmail.com](mailto:martsmith63@hotmail.com).

The session is for any adult who wants support with their bike. They're especially helpful if you: Haven't ridden in a while; Aren't sure if your bike is safe; Are just starting out with cycling; Want to save money on transport. You don't need to be a confident cyclist – The Big Bike Revival is here to help people at all levels feel comfortable and welcome.

Improve your wellbeing, meet new people, bring a friend. Find out about guided rides coming soon!

### Summer Reading Quest

We will be running the Summer Reading Quest throughout the school summer holiday. Sign up from 20th July.

**Wednesday 2nd July, 10am – 12noon: Police Drop-in Session.** Call in for a chat with our local police.

**Wednesday 17th July, 2 – 4pm: Are you interested in researching your family history?** Alde Valley Suffolk Family History Group run monthly drop-in sessions where you can get advice and support to find out all about your roots. The third Wednesday afternoon of the month.

Everyone welcome – your new obsession starts here...

**Wednesdays, 9.30am – 1pm: Barclays Bank.** A Personal Banker is available for enquiries, support and advice every Wednesday morning. You can book an appointment online at [events.uk.barclays/local/search/](http://events.uk.barclays/local/search/) or in person at the library. You can also drop in without an appointment, but you may need to wait a short while.

**Aldeburgh Library Foundation:** Work has already started to put together the new programme for the autumn. Assisted places are available. For details contact Abi: [foalaldeburgh@gmail.com](mailto:foalaldeburgh@gmail.com)

**Please contact the library for details of more regular activities**

Library Opening Hours: Monday, Tuesday, Thursday & Friday: 9am – 1pm; Wednesdays: 9am – 6pm; Saturdays: 10am – 3pm; Sundays: 10am – 1pm.

**Sue Osben, Library Manager**

# THE 81ST ALDEBURGH CARNIVAL

## Can you help?

As communicated earlier this year, the 81st Aldeburgh Carnival will be held on Monday 18th August 2025 and the theme will be: **Celebrating Summertime**.

So come and join us for a day or a few days of fun whilst raising money for local charities. We would like to ask for your support - we need volunteers!

Either in the days and weeks leading up to Carnival or during the Carnival weekend. We have a large team of committee members but there is so, so much to do that we need as many people as possible to manage all of the different tasks, so we would be super happy to hear from you. You can contact me directly at [angela@clareti.com](mailto:angela@clareti.com), or contact us via Aldeburgh Carnival website.

Carnival can only be a success if we have more volunteers to shake buckets, operate contactless pads, man the car parking and many more jobs, which all enable us to collect valuable funds for our local charities, so please, do get in touch if you have any free time to spare.

Aldeburgh Carnival committee wishes you all a happy and successful 2025 Carnival weekend!

## DATES FOR YOUR DIARY

**JUL 6 Alde Valley Ramblers.** Bredfield, Hasketon, Boulge - 'The Fitzgerald Walk', 5.3 mile circular walk passing the site of Bredfield House where the poet Edward Fitzgerald was born and Boulge Church. Meet at Bredfield Village Hall at 10am. TM268531. For more details email: [walks.aldevalleyramblers@gmail.com](mailto:walks.aldevalleyramblers@gmail.com) or visit our website.

**JUL 19 The Friends of St Peter's Sibton present 'Folk in Ruins'.** Music by Syzewell Gap, Silmor and Mary-Jane & Keith Tyrrell; Miraiker's World of Puppets - including Punch & Judy and circus skills; face painting and more. Food and drink from Ollie's Bar and Cheryl's Suffolk Catering; Sibton Abbey Ruins tours. Tickets (cash only): adults £20, U16s free, from Weavers Tearoom, General Stores, Peasenhall, on the day and Eventbrite. 2 - 6pm at the Sibton Abbey Ruins. Entry from 1.30pm.

**JUL 19 & 20 'Folk in Ruins'. Sibton's Folk history.** Discover the memorials and uncover the stories behind the stones of some of those who have gone before and now rest in Sibton Churchyard, an exhibition and records about some unexpectedly famous people, and those who made their home in Sibton. Refreshments at the church are available throughout both days. Ticket (cash only): Adults £5, U16s free. Tickets are available in advance from Weavers Tearoom and the General Store at Peasenhall. There is limited ticket availability on Eventbrite. 10.30am - 4pm at Sibton Church.

**JUL 20 Alde Valley Ramblers. Holton pits, Mells, Wenhaston,** a 7.5 mile circular walk. Meet at Holton Pits, parking off Southwold Road B1123 HOLTON at 10am TM404772. For more details email: [walks.aldevalleyramblers@gmail.com](mailto:walks.aldevalleyramblers@gmail.com) or visit our website.

**JUL 23 - AUG 23 Theatre in the Forest 2025: Hamlet.** Hamlet as you've never seen it before, with Red Rose Chain's imaginative take on Shakespeare's greatest play! With spooky ghosts, poisonous treachery, and heartbreaking love, Hamlet promises to be the must see show of the year! Tuesdays - Saturdays at 7.30pm. Visit: [www.redrosechain.com](http://www.redrosechain.com)

**JUL 26 & 27 Festival of Archaeology: Wargaming the Age of the Anglo-Saxons at Sutton Hoo.** An exciting weekend of Anglo-Saxon era war games with miniature model soldiers. Paint your own miniature model Anglo-Saxon thegn to take home! Enjoy the spectacle of hundreds of beautifully painted model Anglo-Saxon warriors and their enemies aAll of the games will enable visitor participation. 10am - 4.30pm at National Trust Sutton Hoo, Tranmer House, Woodbridge, Suffolk, IP12 3DJ. Visit: [www.nationaltrust.org](http://www.nationaltrust.org)

**AUG 3 Alde Valley Ramblers. Blythburgh,** an 8.3 mile circular walk. Parking for Blythburgh Church off Church from A12 Blythburgh. Meet at 10am TM450752. For more details email: [walks.aldevalleyramblers@gmail.com](mailto:walks.aldevalleyramblers@gmail.com) or visit our website.

This issue was designed, printed & published by Leiston Press.

Aldeburgh Times is your free local paper, 2000 copies are printed every month. We distribute the magazines door to door and to many varied outlets. The next issue will be published Friday 1st August, copy deadline is 14th July - but the earlier the better to ensure inclusion.

### Contacts/Advertisers/Editorial:

Louise Gissing at Leiston Press, Unit 1b Masterlord Industrial Estate, Station Road, Leiston, IP16 4JD  
[lou@tidecollection.com](mailto:lou@tidecollection.com) Tel 01728 833003

Reports, press releases; letters and other editorial contributions with news value are all welcome but are accepted on the understanding that there is no guarantee of inclusion and that they will be selected and edited at the editor's discretion.



# PATMORE WATER SOFTENERS



**Non  
Electric**

**Boiler  
Friendly**

**10 Year  
Guarantee**

*6 South Entrance  
Saxmundham  
IP17 1DQ*

*Ipswich*

*Braintree*

**01728 633007**

**01473 713600**

**01376 334949**

**[www.patmorewatersofteners.co.uk](http://www.patmorewatersofteners.co.uk)**

# Stay in Suffolk



**Visit our offices in Aldeburgh, Southwold, and Saxmundham | Open Mon - Sat**

- Over 300 properties under management
- In-house laundry & cleaning services
- One low commission, no hidden fees
- Only 10% commission for the first 6 months\*
- In house maintenance and compliance team
- 24/7 guest support, and more...

\*terms and conditions apply, contact us for further information

[www.stayinsuffolk.com](http://www.stayinsuffolk.com) | 01728 885262 | 01502 819313 | [office@stayinsuffolk.com](mailto:office@stayinsuffolk.com)

## Sizewell Accommodation



Powered by Stay in Suffolk



**Over 100 properties within 30 minutes of Sizewell**

- Properties sleeping from 1 to 16 guests
- Regular cleaning & laundry services available
- Short, medium, and long term stays
- Dedicated booking manager for corporate stays

**Find out more about listing with us at [www.sizewellaccommodation.com](http://www.sizewellaccommodation.com)**

**Booking & Listing Enquiries: 01728 733131 | [info@sizewellaccommodation.com](mailto:info@sizewellaccommodation.com)**



16m2 of native woodland was created in the production of this magazine

